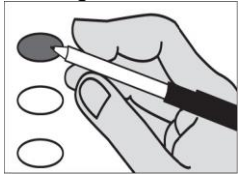


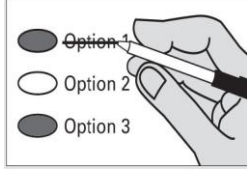
Instructions

Marking Your Ballot



Completely fill in the oval to the left of your choice.
 Vote for only one response in each contest. Use a dark blue or black pen.
 Unless specifically allowed by law, more than one vote for a contest will be an overvote and no votes for that ballot contest will be counted.

Correcting Your Ballot



If you make a correction or mismark your ballot, draw a line through the entire response. You then have the option of making another choice.
 In order for your ballot to be counted, it must be either postmarked or deposited at a designated deposit site no later than 8:00 p.m. on Election Day (April 25, 2017).

Proposition No. 1

Spokane County

Renewal Sales and Use Tax for Emergency Communication Systems and Facilities to include Equipment, Crime Check and the Reverse Emergency Notification System

The Board of County Commissioners of Spokane County adopted Resolution No. 16-0777 concerning a proposition to renew the Emergency Communication Systems and Facilities Sales and Use Tax. The proposition would renew the expiring one-tenth of one percent sales and use tax, the proceeds to be used solely for costs associated with the design, acquisition, construction, equipping, operating, maintaining, remodeling, repairing, reequipping, improvement and financing of Emergency Communication Systems and Facilities to include Equipment, Crime Check and the Reverse Emergency Notification System for a period commencing October 1, 2018 and terminating December 31, 2028.

Should this proposition be approved?

- Yes
- No

Measure No. 1

City of Spokane

Library Operations Levy

The City of Spokane adopted Resolution No. 2016-0093 providing for an increase in the regular property tax levy in excess of state law beginning in 2018 in which the funding would be allocated one hundred percent for library operations. This measure authorizes an increase in the regular property tax levy for 2018 by \$0.07 per \$1,000 of assessed valuation for a levy rate not to exceed \$3.52. The increase in the property tax levy would remain in effect for a period of seven years.

Should this measure be approved?

- Yes
- No

Proposition No. 1

Spokane County Fire Protection District No. 3

Proposition to Restore Property Tax Levy

The Spokane County Fire District No. 3 Board of Commissioners adopted Resolution No. 17-2 concerning a proposition to maintain and adequately fund District operations.

This proposition would restore the District's regular tax levy to \$1.50 per \$1,000.00 of assessed valuation in 2017 for collection in 2018. The funds will maintain and improve fire protection and emergency medical services, replace apparatus, equipment and facilities and provide for firefighter safety. The maximum allowable levy in 2017 shall serve as the base for computing subsequent levy limitations as provided by chapter 84.55 RCW.

Should this proposition be:

- Approved
- Rejected

Voter Service Centers will be open on Election Day (April 25, 2017) only from 7:00 a.m. to 8:00 p.m.

Voters may drop off ballots; get replacement ballots; use an Accessible Voting Unit, or receive other assistance as needed on Election Day.

Downtown Spokane - Elections Office 1033 W Gardner Ave

Downtown Spokane - STA Plaza 701 W Riverside Ave

North Spokane - North Spokane Library - 44 E Hawthorne Rd

South Hill - St. Mark's Church 316 E 24th Ave

Spokane Valley - CenterPlace 2426 N Discovery Pl

West Plains - Cheney Library 610 First St

Ballot Drop Box locations are available 20 days prior to Election Day

Airway Heights Library – 1213 S Lundstrom St

Argonne Library – 4322 N Argonne Rd

Cheney Library – 610 First St

Deer Park Library – 208 S Forest Ave

Downtown Spokane Library – 906 W Main Ave

East Side Library – 524 S Stone St

Elections Office – 1033 W Gardner Ave

Fairfield Library – 305 E Main St

Hillyard Library – 4005 N Cook St

Indian Trail Library – 4909 W Barnes Rd

Liberty Lake Library – 23123 E Mission Ave

Medical Lake Library – 321 E Herb St

Moran Prairie Library – 6004 S Regal St

North Spokane Library – 44 E Hawthorne Rd

Otis Orchards Library – 22324 E Wellesley Ave

Shadle Library – 2111 W Wellesley Ave

South Hill Library – 3324 S Perry St

Spokane Valley Library – 12004 E Main Ave

STA Plaza – 701 W Riverside Ave

In order for your ballot to be counted, it must be either postmarked or deposited at a designated deposit site no later than 8:00 p.m. on Election Day (April 25, 2017). If depositing your ballot in a US Postal Service box, you must include first class postage (\$.49).

The Elections Office is open from 8:30 am to 4:00 pm weekdays to answer questions; get replacement ballots; use an Accessible Voting Unit, or receive other assistance as needed.

Spokane County Elections
1033 W Gardner Ave
Spokane WA 99260
509-477-2320

website:

www.spokanecounty.org/elections

email: elections@spokanecounty.org

For a list of the people and organizations that donated to state and local candidates and ballot measure campaigns, visit www.pdc.wa.gov