

April 4, 2017

Emergency Preparedness & Risk Management

COAD



Defining Emergency Preparedness



BEFORE	DURING	AFTER
<ul style="list-style-type: none"> • Mitigate • Prevent 	<ul style="list-style-type: none"> • Protect • Respond 	<ul style="list-style-type: none"> • Recover • Mitigate

BEFORE	DURING	AFTER
<ul style="list-style-type: none"> • Training and Exercise • ZagReady Program 	<ul style="list-style-type: none"> • Emergency Operation Plan • Staff the EOC 	<ul style="list-style-type: none"> • Recovery Planning • Community Outreach • After Action Programs

Developing the Emergency Operations Plan

- Collaborative Planning Team
- Basic Plan and Annexes



Hazard Escalation Chart

Standard Response

- Routine or daily activities for departments and divisions
- Standard operating procedures address all response activities
- No significant risks to brand or reputation and no major donations or memorial components
- Media and communications easily managed within departments
- No impacts to business operations of the University

Emergency

- Actual or anticipated risk to safety of students, faculty, staff, and the larger Gonzaga community exist
- Potential for or actual limited disruption of essential services and utilities
- Media and communications requires coordination between departments and external recipients
- Potential for brand and reputational risks and minimal donations or memorial considerations
- Logistical, financial, and planning support capabilities could augment standard responses

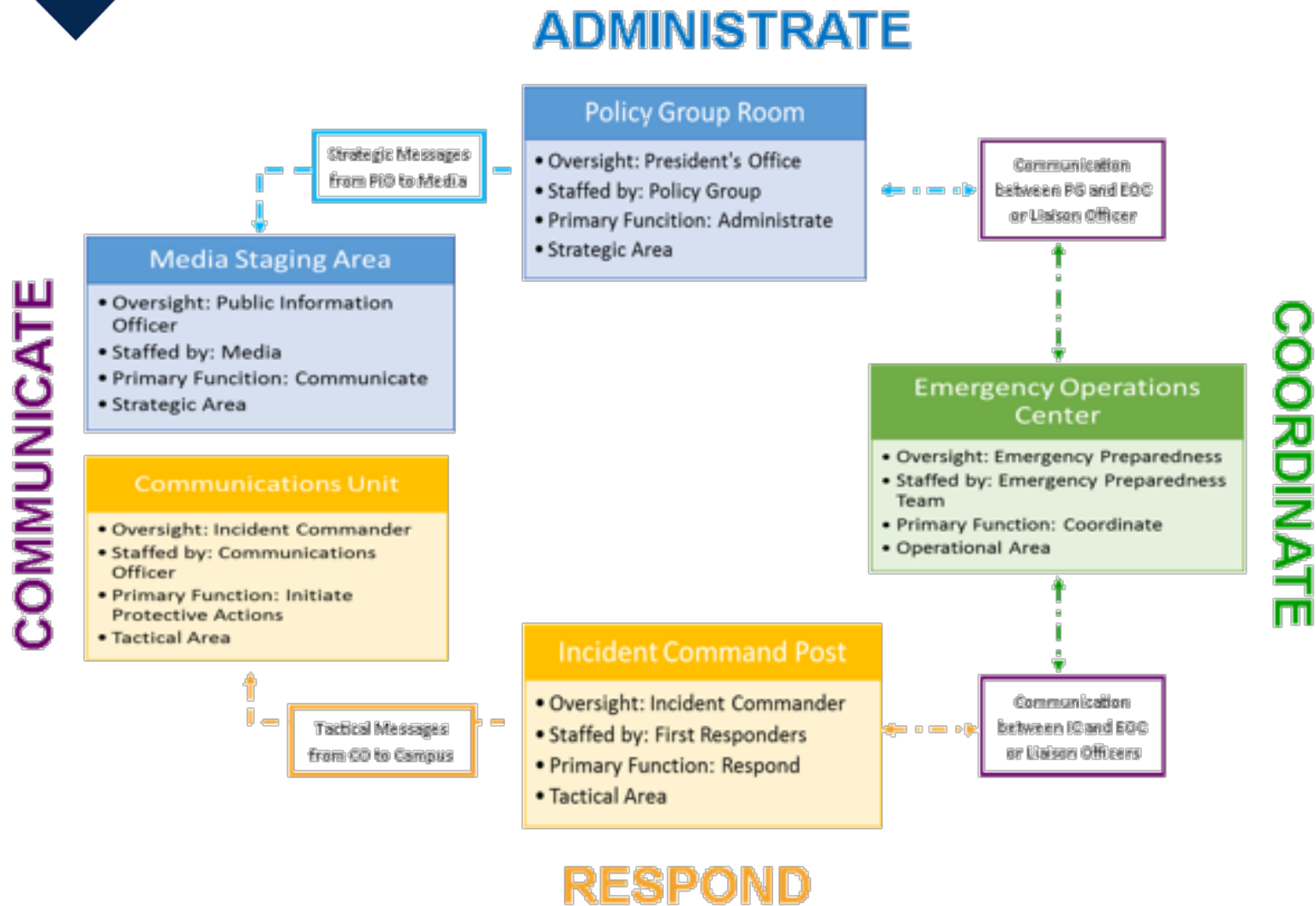
Disaster

- Clear and ongoing or significant threat to the safety of students, faculty, staff, and Gonzaga community
- Potential or actual ongoing disruption of essential services and utilities
- Business continuity efforts are necessary, including staffing issues
- Coordination of media and communications with outside entities necessary
- Clear brand and reputational damage and ongoing risks, including donations and memorials management
- Clear need to coordinate operational, logistical, financial, and planning efforts across the University

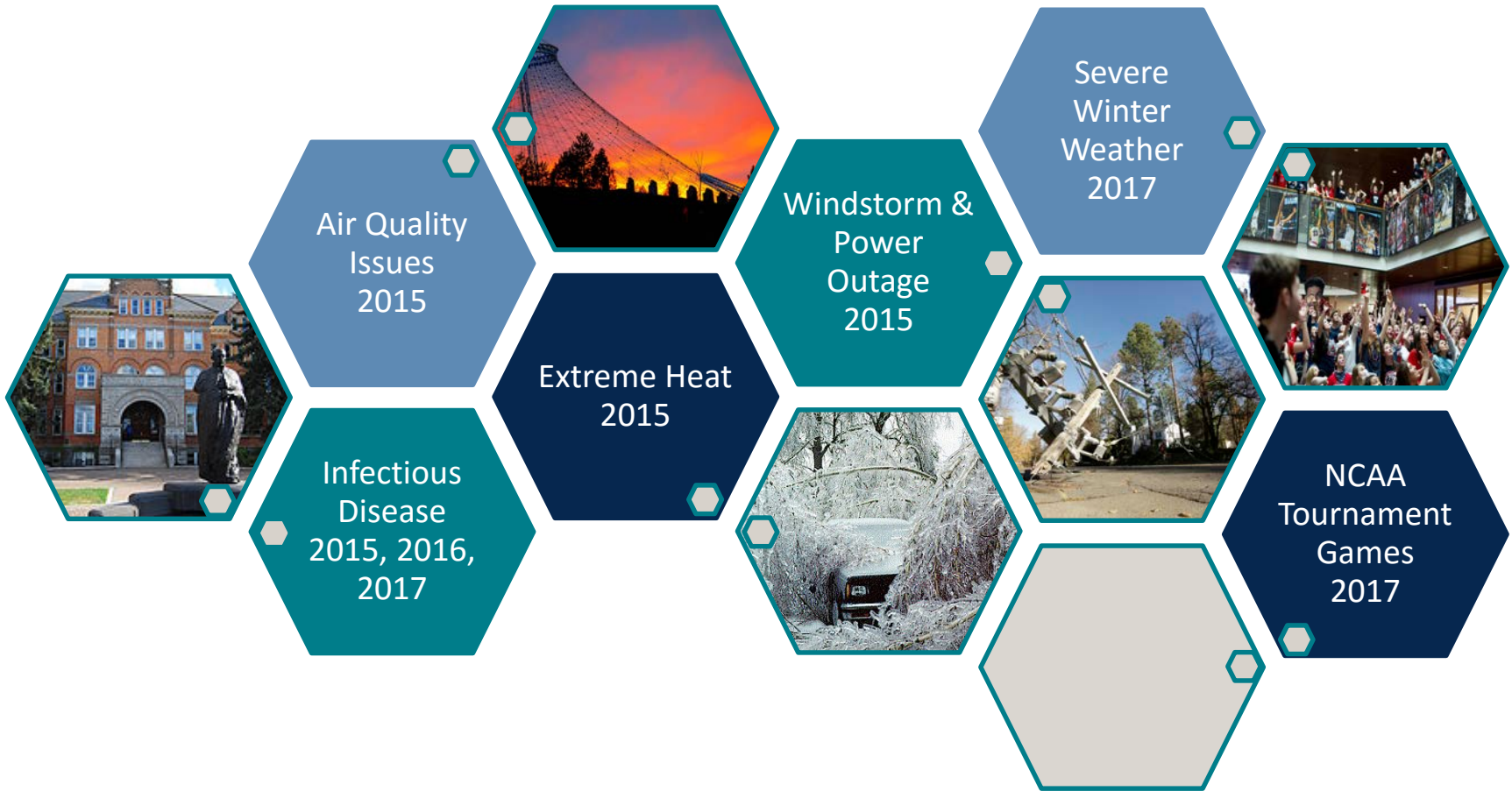
Catastrophe

- Clear and ongoing or significant threat to Gonzaga and the larger community or region
- Prolonged loss of essential services, utilities, and business continuity capabilities
- Potential significant loss of income, infrastructure, buildings, reputation, and business functions
- Gonzaga capabilities overwhelmed, with large emergency financial and logistical considerations likely
- Possible disruption to or loss of command and control considerations for response

Organization During Emergencies



EOP Events Since 2015



Questions

Thank You

