

A F3000 B Spokane County Washington C April 24, 2018

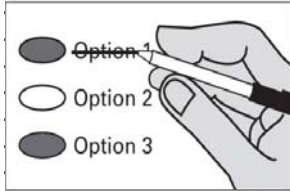
Instructions

Marking Your Ballot



Completely fill in the oval to the left of your choice.
 Use a dark pen.
 Unless specifically allowed by law, more than one vote for a contest will be an overvote and no votes for that ballot contest will be counted.

Correcting Your Ballot



If you make a correction, draw a line through the entire response.
 You then have the option of making another choice if you wish.

In order for your ballot to be counted, it must either be postmarked or deposited at a designated deposit site no later than 8:00 p.m. on Election Day (April 24, 2018). A list of Ballot Drop Box locations may be found at www.spokanecounty.org/elections.

Fire Protection District No. 9

Proposition No. 1
 Spokane County Fire Protection District No. 9
 Replacement Maintenance and Operation Levy

The Board of Commissioners of Spokane County Fire Protection District No. 9 adopted Resolution No. 18-2 concerning a proposition to meet the District's maintenance and operation needs. This proposition would authorize the District to levy the following taxes, in place of an existing levy, upon all taxable property within the District, for support of the District's Expense Fund expenditures for maintenance, operations and emergency medical services:

Levy Year	Collection Year	Approximate Levy Rate Per \$1,000 Assessed Value	Levy Amount
2018	2019	\$1.78	\$8,100,000
2019	2020	\$1.85	\$8,750,000
2020	2021	\$1.93	\$9,450,000

Should this proposition be approved?

- Levy Yes
- Levy No

Ballot Drop Box Locations are available 20 days prior to Election Day:

Argonne Library - 4322 N Argonne Rd
 Indian Trail Library - 4909 W Barnes Rd
 North Spokane Library - 44 E Hawthorne Rd
 Elections Office - 1033 W Gardner Ave

Voter Service Centers will be open on Election Day (April 24) only from 7:00 a.m. to 8:00 p.m.

Voters may drop off ballots, get replacement ballots, use an Accessible Voting Unit, or receive other assistance as needed on Election Day.
 North Spokane Library - 44 E Hawthorne Rd
 Elections Office - 1033 W Gardner Ave

The Elections Office is open from 8:30 a.m. to 4:00 p.m. weekdays to answer questions, get replacement ballots, use an Accessible Voting Unit, or receive other assistance as needed.

In order for your ballot to be counted, it must be either postmarked or deposited at a designated deposit site no later than 8:00 p.m. on Election Day. If depositing your ballot in a US Postal Service box, you must include first class postage (\$0.50). For more information please visit our website at www.spokanecounty.org/elections, call our office at 509-477-2320, or email us at elections@spokanecounty.org.

For a list of the people and organizations that donated to state and local candidates and ballot measure campaigns, visit www.pdc.wa.gov.

A Typ:01 Seq:0001 Spl:01 B C 3000