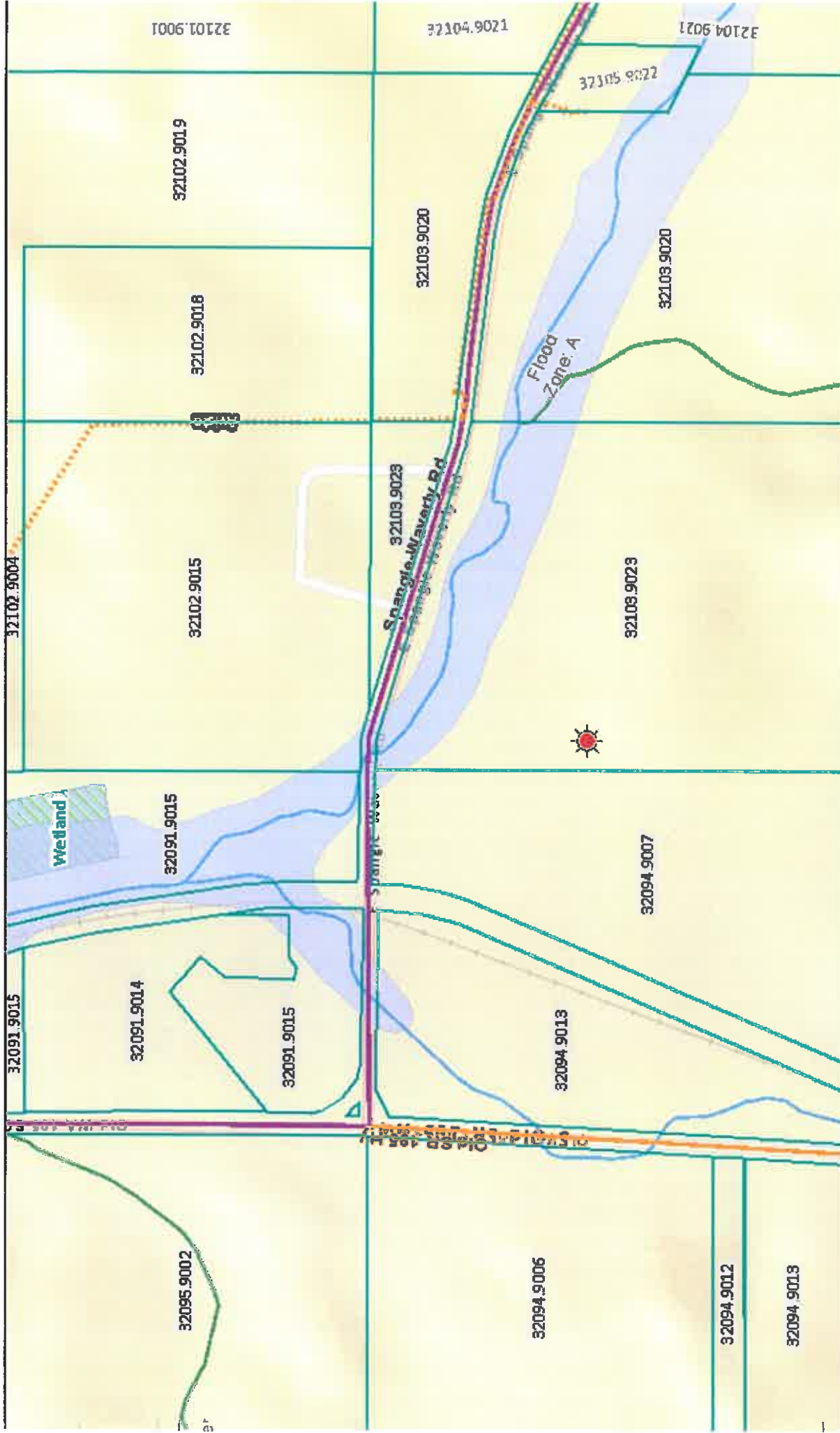
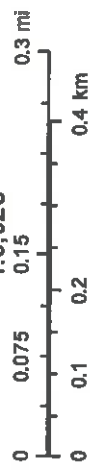


UPPER COLUMBIA ACADEMY GRADING PROJECT



September 10, 2018

1:9,028



Spokane County IT
 Sources: Esri, HERE, Garmin, USGS, Intermap, INCREMENT P, NRCan, E
 Japan, METI, Esri China (Hong Kong), Esri Korea, Esri (Thailand), NGOC
 OpenStreetMap contributors, and the GIS User Community

This map is a composite of "best available data layers. This map is for reference only. No warranties are expressed or implied.
 Building and Plan