

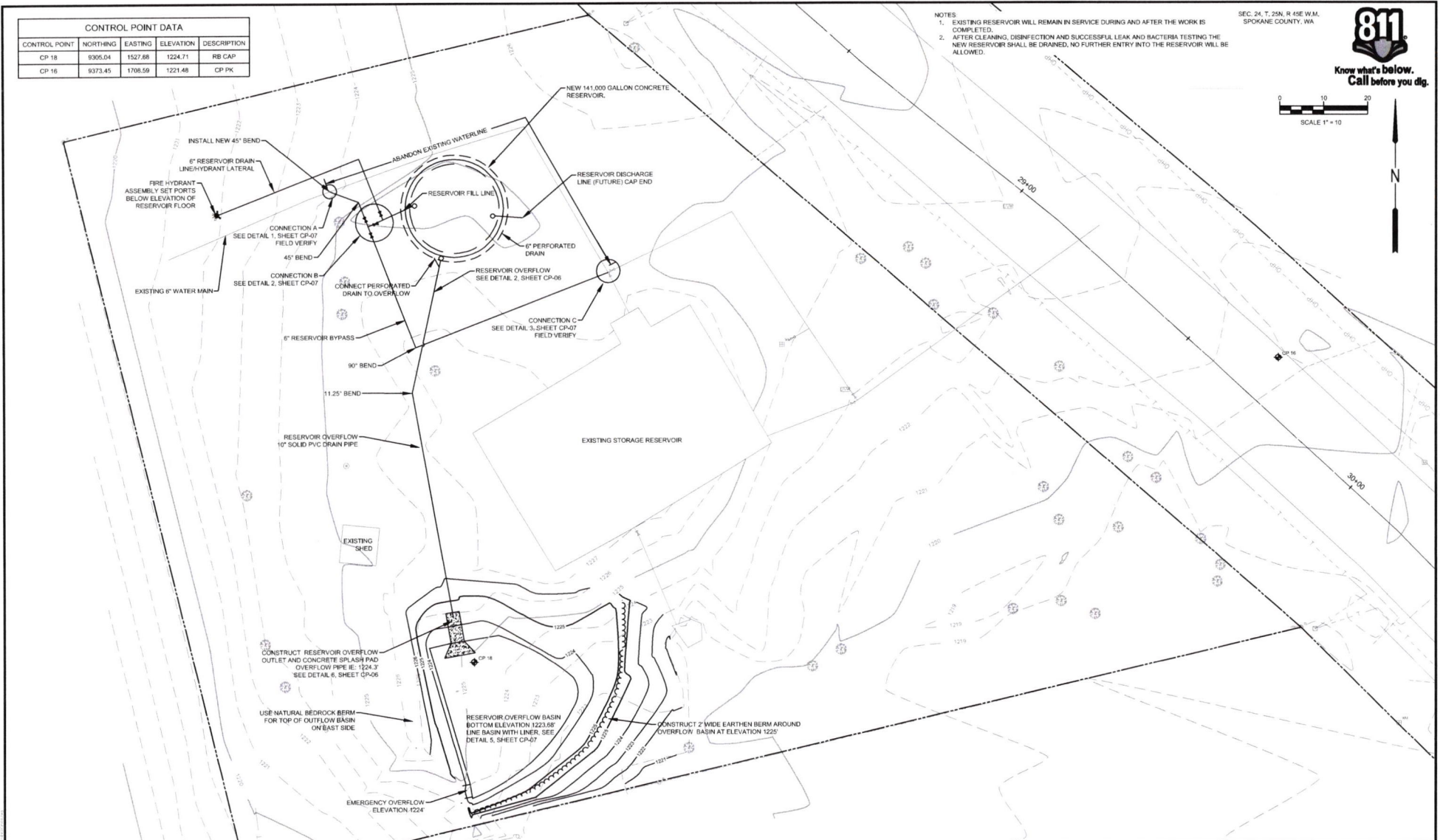
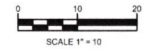
CONTROL POINT DATA				
CONTROL POINT	NORTHING	EASTING	ELEVATION	DESCRIPTION
CP 18	9305.04	1527.88	1224.71	RB CAP
CP 16	9373.45	1708.59	1221.48	CP PK

- NOTES
- EXISTING RESERVOIR WILL REMAIN IN SERVICE DURING AND AFTER THE WORK IS COMPLETED.
  - AFTER CLEANING, DISINFECTION AND SUCCESSFUL LEAK AND BACTERIA TESTING THE NEW RESERVOIR SHALL BE DRAINED. NO FURTHER ENTRY INTO THE RESERVOIR WILL BE ALLOWED.

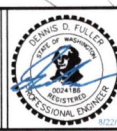
SEC. 24, T. 25N, R. 45E W.M.  
SPOKANE COUNTY, WA



Know what's below.  
Call before you dig.



**REUSE OF DOCUMENTS**  
THIS DRAWING AND THE DESIGNS INCORPORATED HEREIN, AS AN INSTRUMENT OF PROFESSIONAL SERVICE, IS THE PROPERTY OF CENTURY WEST ENGINEERING CORPORATION, AND IS NOT TO BE USED, IN WHOLE OR IN PART, FOR ANY OTHER PROJECT WITHOUT THE WRITTEN CONSENT OF CENTURY WEST ENGINEERING CORPORATION.



**VERIFY SCALES**  
BAR IS ONE INCH ON ORIGINAL DRAWING.  
IF NOT ONE INCH ON THIS SHEET, ADJUST SCALES ACCORDINGLY.

NO.	DATE	BY	APPR	REVISIONS

**CENTURY WEST ENGINEERING**  
SPOKANE OFFICE  
11707 E. MONTGOMERY DRIVE  
SPOKANE VALLEY, WA 99216  
509.838.3910  
509.838.4355 FAX

DATE: 8/22/2019 PROJECT NO: 30221.044.02

DESIGNED BY: DOF
DRAWN BY: NDN
CHECKED BY: DOF
SCALE: 1" = 10'

LIBERTY LAKE SEWER AND WATER DISTRICT  
GREENRIDGE CONSOLIDATION PROJECT, PHASE 1  
141,000 GALLON RESERVOIR AND CONNECTING MAINS

DRAWING NO. CP-04  
SHEET NO. 6 OF 20