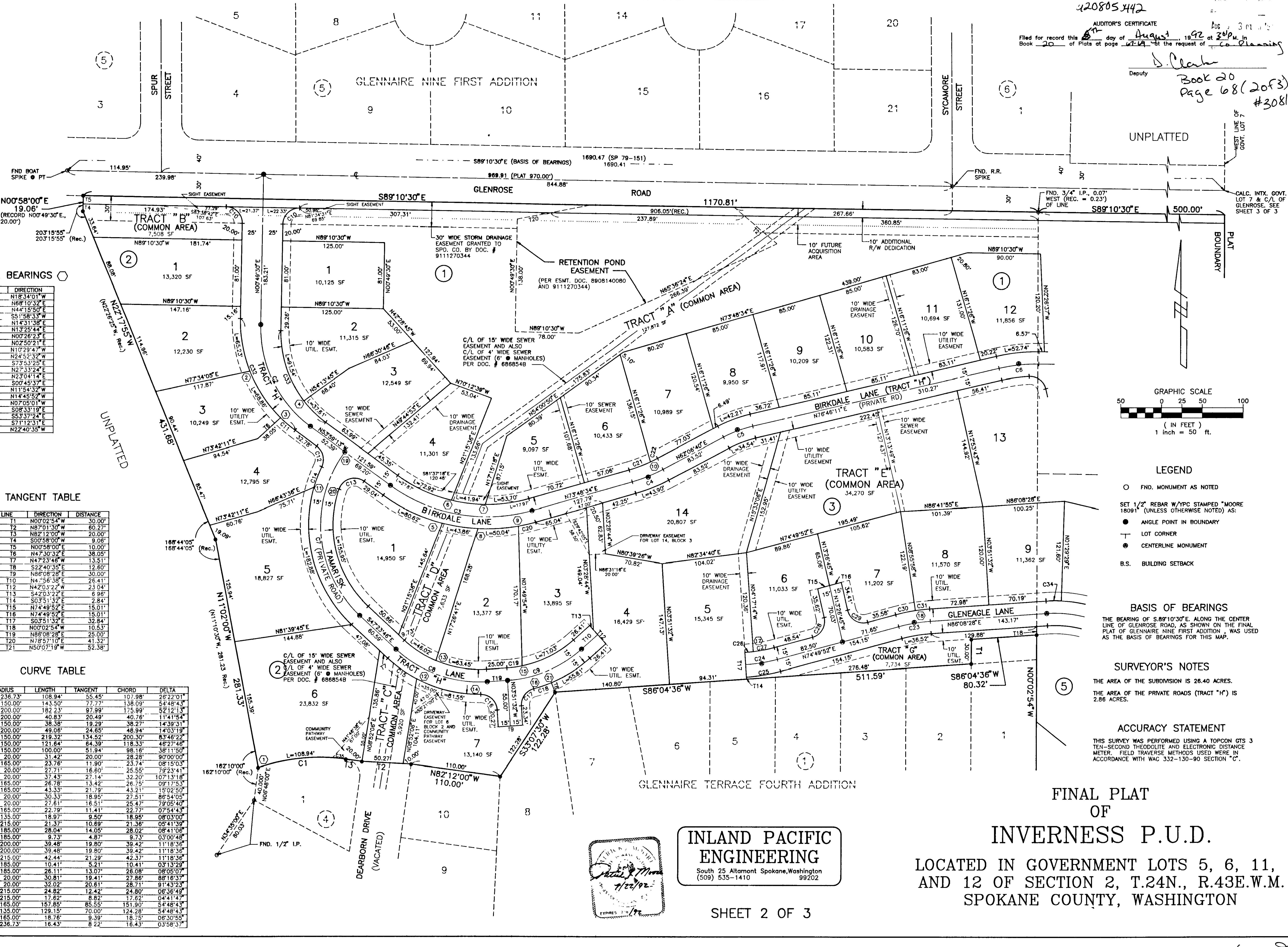


420805442
 AUDITOR'S CERTIFICATE
 Filed for record this 18th day of August, 1992 at 2:00 P.M. in
 Book 20 of Plats of page 68 of the request of
 S. Clark
 Deputy
 Book 20
 Page 68 (2 of 3)
 #3081



RADIAL BEARINGS

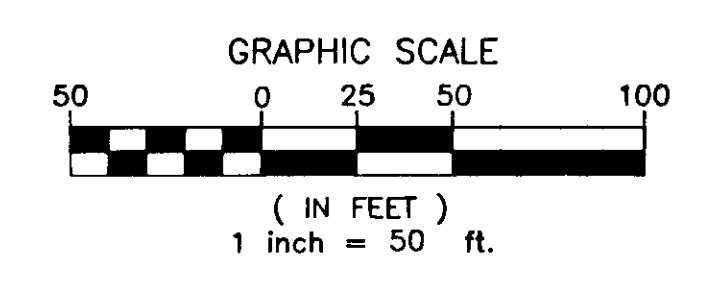
LINE	DIRECTION
1	N18°34'01"W
2	N89°10'30"E
3	N44°15'30"E
4	S51°58'33"W
5	N14°31'38"E
6	N13°25'44"E
7	N02°26'23"E
8	N02°50'21"E
9	N10°29'47"W
10	N24°52'32"W
11	S73°53'28"E
12	N27°33'24"E
13	N23°04'14"E
14	S00°45'37"E
15	N11°54'32"W
16	N14°45'52"W
17	N07°05'01"W
18	S08°33'19"E
19	S53°37'24"E
20	S71°12'31"E
21	N22°40'35"W

TANGENT TABLE

LINE	DIRECTION	DISTANCE
T1	N00°02'54"W	30.00'
T2	N87°01'30"W	60.27'
T3	N82°12'00"W	20.00'
T4	S00°58'00"W	9.08'
T5	N00°58'00"E	10.00'
T6	N47°30'32"E	38.05'
T7	N47°23'46"W	13.51'
T8	S22°40'35"E	12.80'
T9	N86°08'28"E	30.00'
T10	N4°56'38"E	26.41'
T11	N47°05'22"W	23.04'
T12	S42°03'22"E	9.98'
T13	S03°51'32"E	2.84'
T14	N74°49'52"E	15.01'
T15	N74°49'52"E	15.01'
T16	N74°49'52"E	15.01'
T17	S03°51'32"E	32.84'
T18	N00°02'54"W	10.53'
T19	N86°08'28"E	25.00'
T20	N78°57'10"E	41.32'
T21	N50°07'19"W	52.38'

CURVE TABLE

CURVE	RADIUS	LENGTH	TANGENT	CHORD	DELTA
C1	236.73'	108.94'	55.45'	107.98'	26°22'01"
C2	150.00'	143.50'	77.77'	138.09'	54°48'43"
C3	200.00'	182.23'	97.99'	175.99'	52°12'13"
C4	200.00'	40.83'	20.49'	40.76'	11°41'54"
C5	150.00'	38.38'	19.29'	38.27'	14°39'31"
C6	200.00'	49.08'	24.65'	48.94'	14°03'19"
C7	150.00'	219.32'	134.62'	200.30'	83°48'22"
C8	150.00'	121.64'	64.39'	118.33'	48°27'46"
C9	150.00'	100.00'	51.94'	98.16'	38°11'50"
C10	20.00'	31.42'	20.00'	28.28'	90°00'00"
C11	165.00'	23.76'	11.90'	23.74'	08°15'03"
C12	20.00'	27.71'	16.80'	25.55'	79°23'41"
C13	20.00'	37.43'	23.14'	32.20'	107°13'18"
C14	165.00'	26.78'	13.42'	26.75'	09°17'53"
C15	165.00'	43.33'	21.79'	43.21'	15°02'50"
C16	20.00'	30.33'	18.95'	27.51'	86°54'05"
C17	20.00'	27.61'	16.51'	25.47'	79°05'40"
C18	165.00'	22.79'	11.41'	22.77'	07°54'43"
C19	135.00'	18.93'	9.50'	18.95'	08°03'00"
C20	215.00'	21.37'	10.69'	21.38'	09°41'39"
C21	185.00'	28.04'	14.05'	28.02'	08°41'06"
C22	185.00'	9.73'	4.87'	9.73'	03°00'48"
C23	200.00'	39.48'	19.80'	39.42'	11°18'36"
C24	200.00'	39.48'	19.80'	39.42'	11°18'36"
C25	215.00'	42.44'	21.29'	42.37'	11°18'36"
C26	185.00'	10.41'	5.21'	10.41'	03°13'09"
C27	185.00'	26.11'	13.07'	26.08'	08°05'07"
C28	20.00'	30.81'	19.41'	27.86'	88°18'37"
C29	20.00'	32.02'	20.61'	28.71'	91°43'23"
C30	215.00'	24.82'	12.42'	24.80'	06°36'49"
C31	215.00'	17.62'	8.82'	17.62'	04°41'47"
C32	165.00'	163.85'	85.55'	151.90'	54°48'43"
C33	135.00'	128.15'	70.00'	124.28'	54°48'43"
C34	165.00'	18.76'	9.39'	18.75'	06°30'55"
C35	236.73'	16.43'	8.22'	16.43'	03°58'37"



- LEGEND
- FND. MONUMENT AS NOTED
 - SET 1/2" REBAR W/IPC STAMPED "MOORE 18091" (UNLESS OTHERWISE NOTED) AS:
 - ANGLE POINT IN BOUNDARY
 - ┆ LOT CORNER
 - CENTERLINE MONUMENT
 - B.S. BUILDING SETBACK

BASIS OF BEARINGS
 THE BEARING OF S.89°10'30"E. ALONG THE CENTER LINE OF GLENROSE ROAD, AS SHOWN ON THE FINAL PLAT OF GLENNAIRE NINE FIRST ADDITION, WAS USED AS THE BASIS OF BEARINGS FOR THIS MAP.

SURVEYOR'S NOTES
 THE AREA OF THE SUBDIVISION IS 26.40 ACRES.
 THE AREA OF THE PRIVATE ROADS (TRACT "H") IS 2.86 ACRES.

ACCURACY STATEMENT
 THIS SURVEY WAS PERFORMED USING A TOPCON GTS 3 TEN-SECOND THEODOLITE AND ELECTRONIC DISTANCE METER. FIELD TRAVERSE METHODS WERE USED IN ACCORDANCE WITH WAC 332-130-90 SECTION "C".

INLAND PACIFIC ENGINEERING
 South 25 Altamont Spokane, Washington 99202
 (509) 535-1410



FINAL PLAT OF INVERNESS P.U.D.
 LOCATED IN GOVERNMENT LOTS 5, 6, 11, AND 12 OF SECTION 2, T.24N., R.43E.W.M. SPOKANE COUNTY, WASHINGTON

(2 of 3) 20/168

