

741220225

# FINAL PLAT OF MICAVIEW FIRST ADDITION

## SPOKANE COUNTY, WASHINGTON

### LOCATED IN NE 1/4, SEC. 20-T. 25N-R45E WM

OCTOBER, 1974

SCALE: 1"=100'

V.E. CAMERON & ASSOCIATES  
LAND PLANNING CONSULTANTS

FILED OCTOBER 1974  
V.E. CAMERON  
1625  
Rt. 1 Box 12  
Spokane, WA 99214

### DEDICATION

KNOW ALL MEN BY THESE PRESENTS, THAT DELBERT R. CARSTENS AND KATHLEEN M. CARSTENS, HUSBAND AND WIFE; AND WOLFLAND, INC., A CORPORATION ORGANIZED UNDER AND BY VIRTUE OF THE LAWS OF THE STATE OF WASHINGTON, HAVE PLATTED INTO LOTS, BLOCKS AND STREETS THE LAND SHOWN HEREON TO BE KNOWN AS MICAVIEW FIRST ADDITION, IN THE COUNTY OF SPOKANE, STATE OF WASHINGTON; SAID LAND BEING PART OF THE NE 1/4 OF SECTION 20-TOWNSHIP 25 NORTH-RANGE 45 EAST OF WILLAMETTE MERIDIAN; AND THE AFORESAID INDIVIDUALS AND CORPORATION HEREBY DEDICATE TO PUBLIC USE FOREVER THE STREETS AS SHOWN HEREON. LOT 8, BLOCK 6 AS SHOWN HEREON IS DEDICATED TO SPOKANE COUNTY AS GENERAL COUNTY PROPERTY TO BE DEDICATED FOR ROAD PURPOSES FOREVER AT SUCH TIME AS THE ROAD IS CONTINUED AS A FULL WIDTH RIGHT OF WAY. A PUBLIC WATER SYSTEM AS APPROVED BY COUNTY AND STATE HEALTH AUTHORITIES WILL BE INSTALLED WITHIN THIS PLAT, AND THE SUBDIVIDER WILL PROVIDE FOR INDIVIDUAL SERVICE TO EACH LOT PRIOR TO SALE OF EACH LOT. NO MORE THAN ONE DETACHED BUILDING STRUCTURE SHALL BE PERMITTED ON ANY ONE LOT; NOR SHALL ANY LOT BE FURTHER SUBDIVIDED FOR THE PURPOSE OF CREATING ADDITIONAL LOTS OR BUILDING SITES WITHOUT FILING A REPLAT. FIVE FOOT UTILITIES EASEMENTS ARE HEREBY GRANTED AS SHOWN HEREON. IN WITNESS WHEREOF, DELBERT R. CARSTENS AND KATHLEEN M. CARSTENS HAVE HEREUNTO SET THEIR HANDS; ALSO, THE AFORESAID CORPORATION HAS CAUSED ITS CORPORATE NAME TO BE HEREUNTO SUBSCRIBED AND ITS CORPORATE SEAL TO BE HEREUNTO AFFIXED THIS 12th DAY OF November, 1974.

*Delbert R. Carstens*  
DELBERT R. CARSTENS  
*Alvin J. Wolf*  
ALVIN J. WOLF, PRESIDENT

*Kathleen M. Carstens*  
KATHLEEN M. CARSTENS  
*William W. Wood*  
WILLIAM W. WOOD, VICE PRESIDENT

### ACKNOWLEDGMENT

STATE OF WASHINGTON } ON THIS 12th DAY OF November, 1974, BEFORE ME PERSONALLY APPEARED DELBERT R. COUNTY OF SPOKANE } CARSTENS AND KATHLEEN M. CARSTENS, AS INDIVIDUALS; AND ALVIN J. WOLF AND WILLIAM W. WOOD AS OFFICERS OF WOLFLAND, INC.; THE INDIVIDUALS AND CORPORATION THAT EXECUTED THE WITHIN AND FOREGOING INSTRUMENT, AND ACKNOWLEDGED SAID INSTRUMENT TO BE THE FREE AND VOLUNTARY ACT AND DEED OF SAID INDIVIDUALS AND CORPORATION FOR THE USES AND PURPOSES THEREIN MENTIONED, AND UNDER OATH, STATED THAT THEY WERE AUTHORIZED TO EXECUTE SAID INSTRUMENT, AND THAT THE SEAL AFFIXED IS THE CORPORATE SEAL OF SAID CORPORATION.

*Bernard E. Coe*  
NOTARY PUBLIC IN AND FOR THE STATE OF WASHINGTON, RESIDING AT SPOKANE

### SURVEYOR'S CERTIFICATE

I, V. EUGENE CAMERON, A REGISTERED PROFESSIONAL LAND SURVEYOR, HEREBY CERTIFY THAT THIS PLAT REPRESENTS A TRUE COPY OF THE OFFICIAL RECORDS AND SURVEY MADE BY ME, IN, OCTOBER, 1974, AND THAT LOT CORNERS AND MONUMENTS HAVE BEEN SET.

*V. Eugene Cameron*  
REGISTERED PROFESSIONAL LAND SURVEYOR

### COUNTY ENGINEER

EXAMINED AND APPROVED THIS 10th DAY OF Dec, 1974.

*R. D. ...*  
SPOKANE COUNTY ENGINEER

### COUNTY PLANNING COMMISSION

EXAMINED AND APPROVED THIS 11 DAY OF Dec, 1974.

*Mrs. Milton Rawlinson*  
SPOKANE COUNTY PLANNING COMMISSION CHAIRMAN  
*Charles J. ...*  
BY PLANNING DIRECTOR

### COUNTY COMMISSIONERS

EXAMINED AND APPROVED THIS 12 DAY OF Dec, 1974.

*E. W. ...*  
SPOKANE COUNTY COMMISSIONERS CHAIRMAN

### COUNTY TREASURER

I HEREBY CERTIFY THAT REQUIRED TAXES WHICH HAVE BEEN LEVIED AGAINST THE LAND SHOWN HEREON HAVE BEEN FULLY PAID THIS 12th DAY OF December, 1974.

*Don W. ...*  
SPOKANE COUNTY TREASURER BY DEPUTY

### COUNTY ASSESSOR

EXAMINED AND APPROVED THIS 11th DAY OF Dec, 1974.

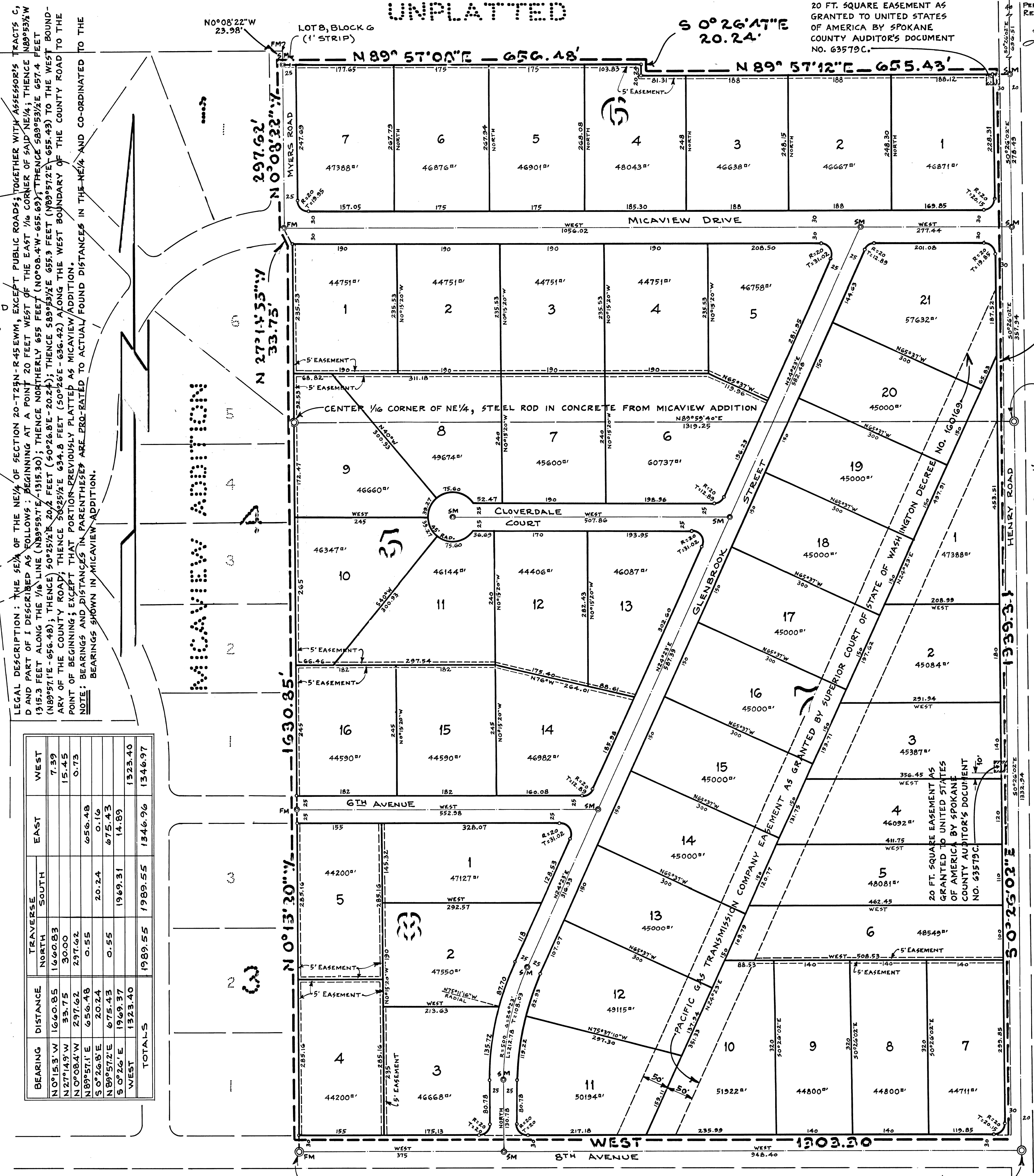
*R. E. ... Paul ...*  
SPOKANE COUNTY ASSESSOR BY DEPUTY

### COUNTY HEALTH DISTRICT

EXAMINED AND APPROVED THIS 10th DAY OF Dec, 1974.

*E. O. ...*  
SPOKANE COUNTY HEALTH OFFICER

BEARING	DISTANCE	TRAVERSE NORTH	TRAVERSE SOUTH	EAST	WEST	TOTALS
N0°15.3'W	1640.95	1640.95		7.39		1648.34
N27°14.55'W	33.75	30.00	33.75	15.45		45.45
N0°08.22'W	23.98		23.98	0.73		24.71
N0°08.22'W	23.98		23.98	0.73		24.71
S0°22.6'E	656.48		656.48			656.48
S0°22.6'E	20.24		20.24	0.16		20.40
N89°57.12"E	655.43		655.43	675.43		1330.86
S0°22.6'E	1949.37		1949.37	14.89		1964.26
WEST	1323.40				1323.40	1323.40
						1346.97



LEGEND: SM INDICATES STEEL ROD SET IN CONCRETE; EXCEPT IN ASPHALT PAVING, WHERE SPIKES WITH "4" WERE SET. FM INDICATES MONUMENT FOUND FROM MICAVIEW ADDITION; STEEL ROD SET IN CONCRETE

UNPLATTED

EAST 1/4 CORNER SEC. 20- FOUND ROD AS PER COUNTY RECORDS

10 FOOT STRIP DEDICATED BY THIS PLAT

EAST 1/16 CORNER OF NE 1/4 SEC. 20 SPIKE WITH "4" ON TOP SET FOR THIS PLAT

NE SEC. CORNER BRASS CAP AS PER COUNTY RECORDS

20 FT. SQUARE EASEMENT AS GRANTED TO UNITED STATES OF AMERICA BY SPOKANE COUNTY AUDITOR'S DOCUMENT NO. 63579C.

UNPLATTED

S 0°26'47"E 20.24'

N 0°08'22"W 23.98'

N 89°57'00"E - 656.48'

N 89°57'12"E - 655.43'

2214

2214

2214