

# PINE CLIFF

Being a part of W. 1/2 of S.W. 1/4 of Sec. 26 Tp. 25 N. R. 43 E. W. 1 M.  
Spokane County, Wash.

February 1911.

Scale 1 inch = 100 feet.

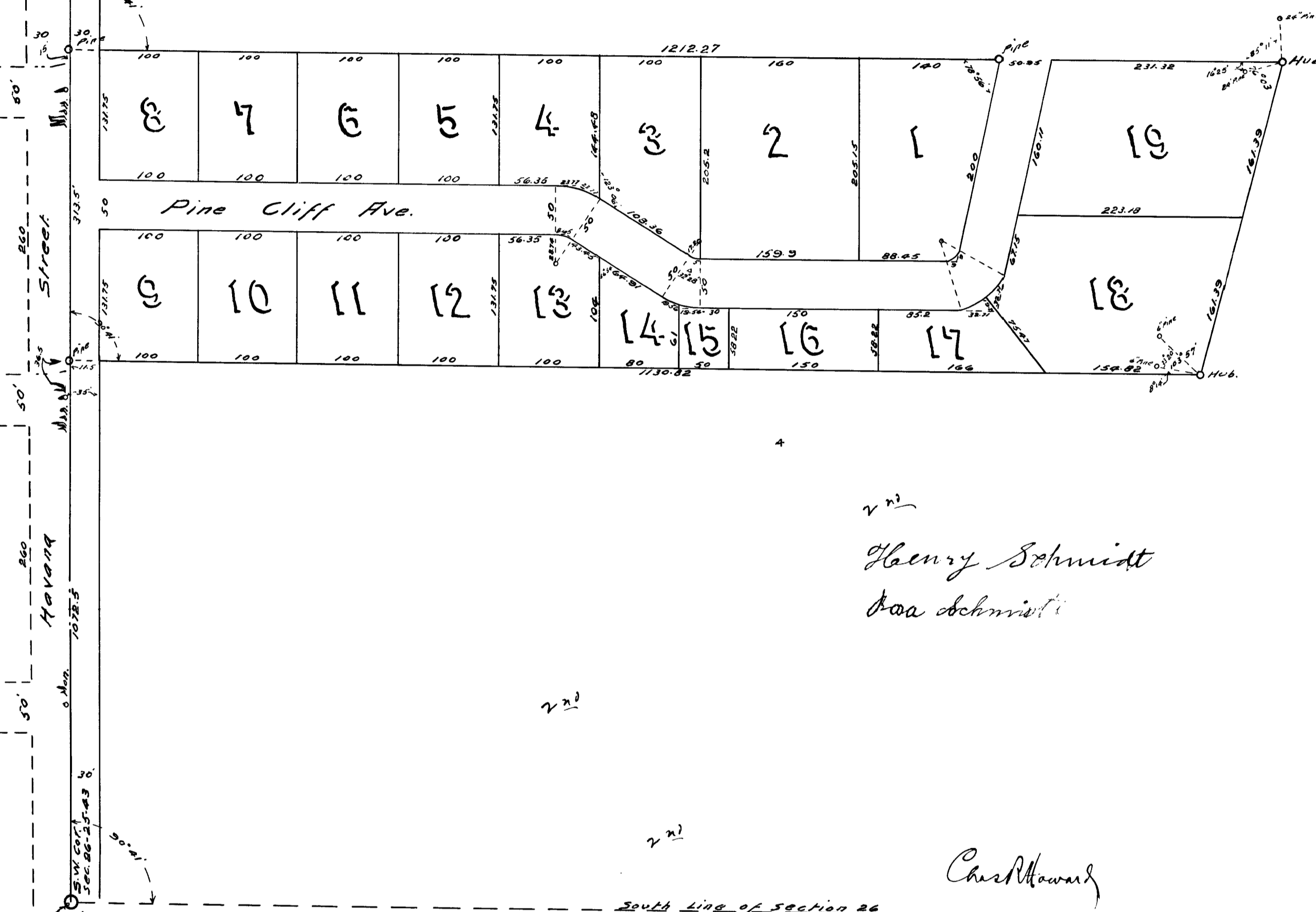
C. B. MOSS  
SURVEYOR.

97

Heights  
96

Lincoln  
81

80



v n  
Henry Schmidt  
Per Schmidt

Chas Howard

C. B. Moss

Approved  
February 29, 1911.  
L. H. Graves  
Co. Engineer.

J. K. McBrown