



# VALENOV LANE HONOROF LANE



### PROPOSED & EXISTING UTILITIES

#### GENERAL NOTES AND DISCUSSION

1. ALL UTILITIES SHOWN ARE BASED ON RECORD DRAWINGS AND FIELD SURVEY. THE CLIENT IS RESPONSIBLE FOR VERIFYING THE LOCATION AND DEPTH OF ALL UTILITIES PRIOR TO CONSTRUCTION.
2. ALL UTILITIES SHALL BE DEEPENED TO A MINIMUM OF 48" BELOW FINISHED GRADE UNLESS OTHERWISE NOTED.
3. ALL UTILITIES SHALL BE PROTECTED BY A MINIMUM OF 18" OF GRANULAR FILL OVER THE TOP OF THE UTILITY.
4. ALL UTILITIES SHALL BE INSTALLED IN ACCORDANCE WITH THE LATEST EDITIONS OF THE CALIFORNIA ELECTRICAL CODE AND THE CALIFORNIA GAS CODE.
5. ALL UTILITIES SHALL BE INSTALLED IN ACCORDANCE WITH THE LATEST EDITIONS OF THE CALIFORNIA PLUMBING CODE AND THE CALIFORNIA MECHANICAL CODE.
6. ALL UTILITIES SHALL BE INSTALLED IN ACCORDANCE WITH THE LATEST EDITIONS OF THE CALIFORNIA FIRE CODE AND THE CALIFORNIA BUILDING CODE.
7. ALL UTILITIES SHALL BE INSTALLED IN ACCORDANCE WITH THE LATEST EDITIONS OF THE CALIFORNIA WATER CODE AND THE CALIFORNIA IRRIGATION CODE.
8. ALL UTILITIES SHALL BE INSTALLED IN ACCORDANCE WITH THE LATEST EDITIONS OF THE CALIFORNIA TELECOMMUNICATIONS CODE AND THE CALIFORNIA TELEVISION CODE.
9. ALL UTILITIES SHALL BE INSTALLED IN ACCORDANCE WITH THE LATEST EDITIONS OF THE CALIFORNIA RAILROAD CODE AND THE CALIFORNIA AIRCRAFT CODE.
10. ALL UTILITIES SHALL BE INSTALLED IN ACCORDANCE WITH THE LATEST EDITIONS OF THE CALIFORNIA MARINE CODE AND THE CALIFORNIA BOATING CODE.
11. ALL UTILITIES SHALL BE INSTALLED IN ACCORDANCE WITH THE LATEST EDITIONS OF THE CALIFORNIA AEROSPACE CODE AND THE CALIFORNIA AVIATION CODE.
12. ALL UTILITIES SHALL BE INSTALLED IN ACCORDANCE WITH THE LATEST EDITIONS OF THE CALIFORNIA NUCLEAR CODE AND THE CALIFORNIA RADIATION CODE.
13. ALL UTILITIES SHALL BE INSTALLED IN ACCORDANCE WITH THE LATEST EDITIONS OF THE CALIFORNIA ENVIRONMENTAL CODE AND THE CALIFORNIA POLLUTION CODE.
14. ALL UTILITIES SHALL BE INSTALLED IN ACCORDANCE WITH THE LATEST EDITIONS OF THE CALIFORNIA HEALTH CARE CODE AND THE CALIFORNIA MEDICAL CODE.
15. ALL UTILITIES SHALL BE INSTALLED IN ACCORDANCE WITH THE LATEST EDITIONS OF THE CALIFORNIA EDUCATION CODE AND THE CALIFORNIA SCHOOL CODE.
16. ALL UTILITIES SHALL BE INSTALLED IN ACCORDANCE WITH THE LATEST EDITIONS OF THE CALIFORNIA LABOR CODE AND THE CALIFORNIA EMPLOYMENT CODE.
17. ALL UTILITIES SHALL BE INSTALLED IN ACCORDANCE WITH THE LATEST EDITIONS OF THE CALIFORNIA FINANCIAL CODE AND THE CALIFORNIA BANKING CODE.
18. ALL UTILITIES SHALL BE INSTALLED IN ACCORDANCE WITH THE LATEST EDITIONS OF THE CALIFORNIA PROFESSIONAL CODE AND THE CALIFORNIA REGULATION CODE.
19. ALL UTILITIES SHALL BE INSTALLED IN ACCORDANCE WITH THE LATEST EDITIONS OF THE CALIFORNIA CONSUMER CODE AND THE CALIFORNIA PROTECTION CODE.
20. ALL UTILITIES SHALL BE INSTALLED IN ACCORDANCE WITH THE LATEST EDITIONS OF THE CALIFORNIA GOVERNMENT CODE AND THE CALIFORNIA PUBLIC CODE.



### GENERAL NOTES

1. ALL UTILITIES SHALL BE INSTALLED IN ACCORDANCE WITH THE LATEST EDITIONS OF THE CALIFORNIA ELECTRICAL CODE AND THE CALIFORNIA GAS CODE.
2. ALL UTILITIES SHALL BE INSTALLED IN ACCORDANCE WITH THE LATEST EDITIONS OF THE CALIFORNIA PLUMBING CODE AND THE CALIFORNIA MECHANICAL CODE.
3. ALL UTILITIES SHALL BE INSTALLED IN ACCORDANCE WITH THE LATEST EDITIONS OF THE CALIFORNIA FIRE CODE AND THE CALIFORNIA BUILDING CODE.
4. ALL UTILITIES SHALL BE INSTALLED IN ACCORDANCE WITH THE LATEST EDITIONS OF THE CALIFORNIA WATER CODE AND THE CALIFORNIA IRRIGATION CODE.
5. ALL UTILITIES SHALL BE INSTALLED IN ACCORDANCE WITH THE LATEST EDITIONS OF THE CALIFORNIA TELECOMMUNICATIONS CODE AND THE CALIFORNIA TELEVISION CODE.
6. ALL UTILITIES SHALL BE INSTALLED IN ACCORDANCE WITH THE LATEST EDITIONS OF THE CALIFORNIA RAILROAD CODE AND THE CALIFORNIA AVIATION CODE.
7. ALL UTILITIES SHALL BE INSTALLED IN ACCORDANCE WITH THE LATEST EDITIONS OF THE CALIFORNIA MARINE CODE AND THE CALIFORNIA BOATING CODE.
8. ALL UTILITIES SHALL BE INSTALLED IN ACCORDANCE WITH THE LATEST EDITIONS OF THE CALIFORNIA AEROSPACE CODE AND THE CALIFORNIA AVIATION CODE.
9. ALL UTILITIES SHALL BE INSTALLED IN ACCORDANCE WITH THE LATEST EDITIONS OF THE CALIFORNIA NUCLEAR CODE AND THE CALIFORNIA RADIATION CODE.
10. ALL UTILITIES SHALL BE INSTALLED IN ACCORDANCE WITH THE LATEST EDITIONS OF THE CALIFORNIA ENVIRONMENTAL CODE AND THE CALIFORNIA POLLUTION CODE.
11. ALL UTILITIES SHALL BE INSTALLED IN ACCORDANCE WITH THE LATEST EDITIONS OF THE CALIFORNIA HEALTH CARE CODE AND THE CALIFORNIA MEDICAL CODE.
12. ALL UTILITIES SHALL BE INSTALLED IN ACCORDANCE WITH THE LATEST EDITIONS OF THE CALIFORNIA EDUCATION CODE AND THE CALIFORNIA SCHOOL CODE.
13. ALL UTILITIES SHALL BE INSTALLED IN ACCORDANCE WITH THE LATEST EDITIONS OF THE CALIFORNIA LABOR CODE AND THE CALIFORNIA EMPLOYMENT CODE.
14. ALL UTILITIES SHALL BE INSTALLED IN ACCORDANCE WITH THE LATEST EDITIONS OF THE CALIFORNIA FINANCIAL CODE AND THE CALIFORNIA BANKING CODE.
15. ALL UTILITIES SHALL BE INSTALLED IN ACCORDANCE WITH THE LATEST EDITIONS OF THE CALIFORNIA PROFESSIONAL CODE AND THE CALIFORNIA REGULATION CODE.
16. ALL UTILITIES SHALL BE INSTALLED IN ACCORDANCE WITH THE LATEST EDITIONS OF THE CALIFORNIA CONSUMER CODE AND THE CALIFORNIA PROTECTION CODE.
17. ALL UTILITIES SHALL BE INSTALLED IN ACCORDANCE WITH THE LATEST EDITIONS OF THE CALIFORNIA GOVERNMENT CODE AND THE CALIFORNIA PUBLIC CODE.

### MATERIALS

1. ALL UTILITIES SHALL BE INSTALLED IN ACCORDANCE WITH THE LATEST EDITIONS OF THE CALIFORNIA ELECTRICAL CODE AND THE CALIFORNIA GAS CODE.
2. ALL UTILITIES SHALL BE INSTALLED IN ACCORDANCE WITH THE LATEST EDITIONS OF THE CALIFORNIA PLUMBING CODE AND THE CALIFORNIA MECHANICAL CODE.
3. ALL UTILITIES SHALL BE INSTALLED IN ACCORDANCE WITH THE LATEST EDITIONS OF THE CALIFORNIA FIRE CODE AND THE CALIFORNIA BUILDING CODE.
4. ALL UTILITIES SHALL BE INSTALLED IN ACCORDANCE WITH THE LATEST EDITIONS OF THE CALIFORNIA WATER CODE AND THE CALIFORNIA IRRIGATION CODE.
5. ALL UTILITIES SHALL BE INSTALLED IN ACCORDANCE WITH THE LATEST EDITIONS OF THE CALIFORNIA TELECOMMUNICATIONS CODE AND THE CALIFORNIA TELEVISION CODE.
6. ALL UTILITIES SHALL BE INSTALLED IN ACCORDANCE WITH THE LATEST EDITIONS OF THE CALIFORNIA RAILROAD CODE AND THE CALIFORNIA AVIATION CODE.
7. ALL UTILITIES SHALL BE INSTALLED IN ACCORDANCE WITH THE LATEST EDITIONS OF THE CALIFORNIA MARINE CODE AND THE CALIFORNIA BOATING CODE.
8. ALL UTILITIES SHALL BE INSTALLED IN ACCORDANCE WITH THE LATEST EDITIONS OF THE CALIFORNIA AEROSPACE CODE AND THE CALIFORNIA AVIATION CODE.
9. ALL UTILITIES SHALL BE INSTALLED IN ACCORDANCE WITH THE LATEST EDITIONS OF THE CALIFORNIA NUCLEAR CODE AND THE CALIFORNIA RADIATION CODE.
10. ALL UTILITIES SHALL BE INSTALLED IN ACCORDANCE WITH THE LATEST EDITIONS OF THE CALIFORNIA ENVIRONMENTAL CODE AND THE CALIFORNIA POLLUTION CODE.
11. ALL UTILITIES SHALL BE INSTALLED IN ACCORDANCE WITH THE LATEST EDITIONS OF THE CALIFORNIA HEALTH CARE CODE AND THE CALIFORNIA MEDICAL CODE.
12. ALL UTILITIES SHALL BE INSTALLED IN ACCORDANCE WITH THE LATEST EDITIONS OF THE CALIFORNIA EDUCATION CODE AND THE CALIFORNIA SCHOOL CODE.
13. ALL UTILITIES SHALL BE INSTALLED IN ACCORDANCE WITH THE LATEST EDITIONS OF THE CALIFORNIA LABOR CODE AND THE CALIFORNIA EMPLOYMENT CODE.
14. ALL UTILITIES SHALL BE INSTALLED IN ACCORDANCE WITH THE LATEST EDITIONS OF THE CALIFORNIA FINANCIAL CODE AND THE CALIFORNIA BANKING CODE.
15. ALL UTILITIES SHALL BE INSTALLED IN ACCORDANCE WITH THE LATEST EDITIONS OF THE CALIFORNIA PROFESSIONAL CODE AND THE CALIFORNIA REGULATION CODE.
16. ALL UTILITIES SHALL BE INSTALLED IN ACCORDANCE WITH THE LATEST EDITIONS OF THE CALIFORNIA CONSUMER CODE AND THE CALIFORNIA PROTECTION CODE.
17. ALL UTILITIES SHALL BE INSTALLED IN ACCORDANCE WITH THE LATEST EDITIONS OF THE CALIFORNIA GOVERNMENT CODE AND THE CALIFORNIA PUBLIC CODE.

### PROPERTY INFORMATION

OWNER	ADDRESS	SUBJECT
...	...	...
...	...	...
...	...	...

THIS PLAN IS THE PROPERTY OF THE ENGINEER AND IS NOT TO BE REPRODUCED OR COPIED IN ANY MANNER WITHOUT THE WRITTEN PERMISSION OF THE ENGINEER. THE ENGINEER ASSUMES NO LIABILITY FOR ANY DAMAGE OR INJURY TO PERSONS OR PROPERTY CAUSED BY THE USE OF THIS PLAN.

### LOCAL DESCRIPTION

THE PROJECT IS SITUATED ON THE CORNER OF VALENOV LANE AND HONOROF LANE. THE PROJECT AREA IS APPROXIMATELY 100' BY 100'. THE PROJECT AREA IS SURROUNDED BY RESIDENTIAL DEVELOPMENT. THE PROJECT AREA IS ADJACENT TO THE HONOROF LANE RIGHT-OF-WAY. THE PROJECT AREA IS ADJACENT TO THE VALENOV LANE RIGHT-OF-WAY. THE PROJECT AREA IS ADJACENT TO THE HONOROF LANE RIGHT-OF-WAY. THE PROJECT AREA IS ADJACENT TO THE VALENOV LANE RIGHT-OF-WAY.



NOTICE: THIS PLAN IS THE PROPERTY OF THE ENGINEER AND IS NOT TO BE REPRODUCED OR COPIED IN ANY MANNER WITHOUT THE WRITTEN PERMISSION OF THE ENGINEER.

*[Signature]*  
Professional Engineer  
State of California  
License No. 4488

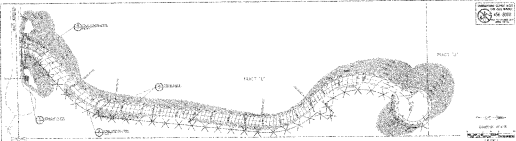
NO.	DATE	DESCRIPTION
1	...	...
2	...	...
3	...	...



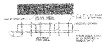
INTERNATIONAL WATER & WASTEWATER ENGINEERS  
1111 S. GATEWAY BLVD., SUITE 100  
SAN ANTONIO, TEXAS 78204



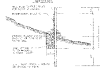
STATE OF CALIFORNIA  
DIVISION OF PROFESSIONAL ENGINEERING  
1001 L STREET, SUITE 100  
SAN FRANCISCO, CA 94102



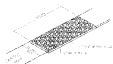
1. FABRIC AND WIRE MESH (ALSO SEE SPECIFIC PAGES 10-11)



2. STAKE BALE DETAIL



3. SILT FENCE DETAIL



5. SILT FENCE ENTRANCE

- LEGEND**
- 1. SILT FENCE FABRIC
  - 2. SILT FENCE STAKE
  - 3. SILT FENCE POST
  - 4. SILT FENCE DETAIL
  - 5. SILT FENCE ENTRANCE



COUNTY OF SAN DIEGO  
 COUNTY ENGINEER  
 OFFICE OF THE COUNTY ENGINEER  
 1000 G STREET, SAN DIEGO, CALIFORNIA 92101

*[Signature]*  
 COUNTY ENGINEER

*[Signature]*  
 DATE

NO.	DATE	DESCRIPTION

SCALE: AS SHOWN  
 SHEET NO. 10000  
 PROJECT NO. 10000  
 DRAWN BY: [Name]  
 CHECKED BY: [Name]



STATE OF CALIFORNIA  
 IRRIGATION WATER CONTROL ENGINEERS  
 VALEROV LANE  
 1000 G STREET, SAN DIEGO, CALIFORNIA 92101  
 PHONE: (619) 594-1000  
 FAX: (619) 594-1001  
 WWW: WWW.IWCE.ORG