

E. 73RD AVE ROAD WIDENING PLANS

LEGEND	
	- TEMPORARY BENCH MARK
	- WATER VALVE
	- FIRE HYDRANT
	- TELEPHONE RISER
	- WATER MANHOLE
	- CABLE RISER
	- MAIL BOX
	- TRANSFORMER
	- EXISTING FENCE
	- GAS LINE

SPOKANE COUNTY ENGINEERS OFFICE
OFFICIAL PUBLIC DOCUMENT ORIGINAL
CONSTRUCTION PLANS
 PROJECT #:
 DATE ACCEPTED:
 ACCEPTANCE EXPIRES:
 PROJECT LANE MILES PUBLIC:
 PROJECT LANE MILES PRIVATE:
 CONSTRUCTION DOCUMENT AND CERTIFIED RECORD DRAWINGS, "AS-BUILTS" ARE REQUIRED PRIOR TO COUNTY ACCEPTANCE AND ESTABLISHMENT OF THE ROADS AND DRAINAGE FACILITIES FOR MAINTENANCE. PERMIT REQUIRED! (509) 477-3800 NOTIFY PERMIT ENGINEER 2 BUSINESS DAYS PRIOR TO CONSTRUCTION

EROSION CONTROL NOTES

ER1) AN EROSION/SEDIMENTATION CONTROL (ESC) PLAN IS REQUIRED FOR THIS PROJECT. IMPLEMENTATION OF THE ESC PLAN, AND CONSTRUCTION, MAINTENANCE, AND UPGRADING OF THE ESC FACILITIES ARE THE RESPONSIBILITY OF THE DEVELOPER UNTIL ALL CONSTRUCTION IS COMPLETED AND ACCEPTED BY SPOKANE COUNTY, OR UNTIL VEGETATION IS ESTABLISHED THROUGHOUT THE SITE, AND ACCEPTED BY SPOKANE COUNTY, WHICHEVER IS LATER.

ER2) APPROVAL OF THE ESC PLAN DOES NOT CONSTITUTE APPROVAL OF ANY OF THE PROPOSED ROAD, STORM DRAINAGE, GRADING OR UTILITY DESIGN ELEMENTS SHOWN ON THE ESC PLAN.

ER3) THE EROSION/SEDIMENTATION CONTROL MEASURES SHOWN ARE THE MINIMUM REQUIREMENTS FOR THE ANTICIPATED SITE CONDITIONS. THE CONTRACTOR SHALL INSPECT AND MAINTAIN THESE ESC MEASURES DAILY, AND SHALL MAINTAIN AND UPGRADE THESE MEASURES AS NECESSARY TO PREVENT SEDIMENT-LADEN WATER FROM EITHER FLOWING OFF THE SITE, OR INTO NEW/EXISTING STORM DRAINAGE FACILITIES, SUCH AS DRYWELLS, CULVERTS, OR GRAVEL GALLERIES.

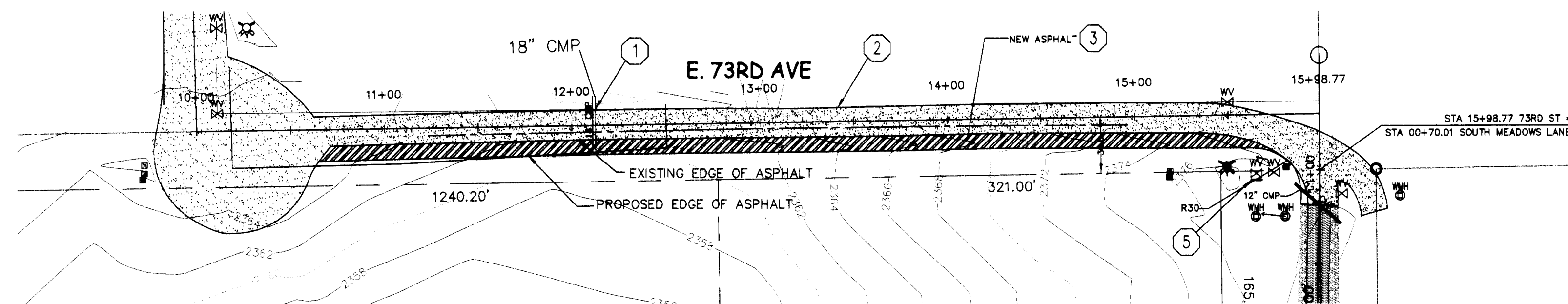
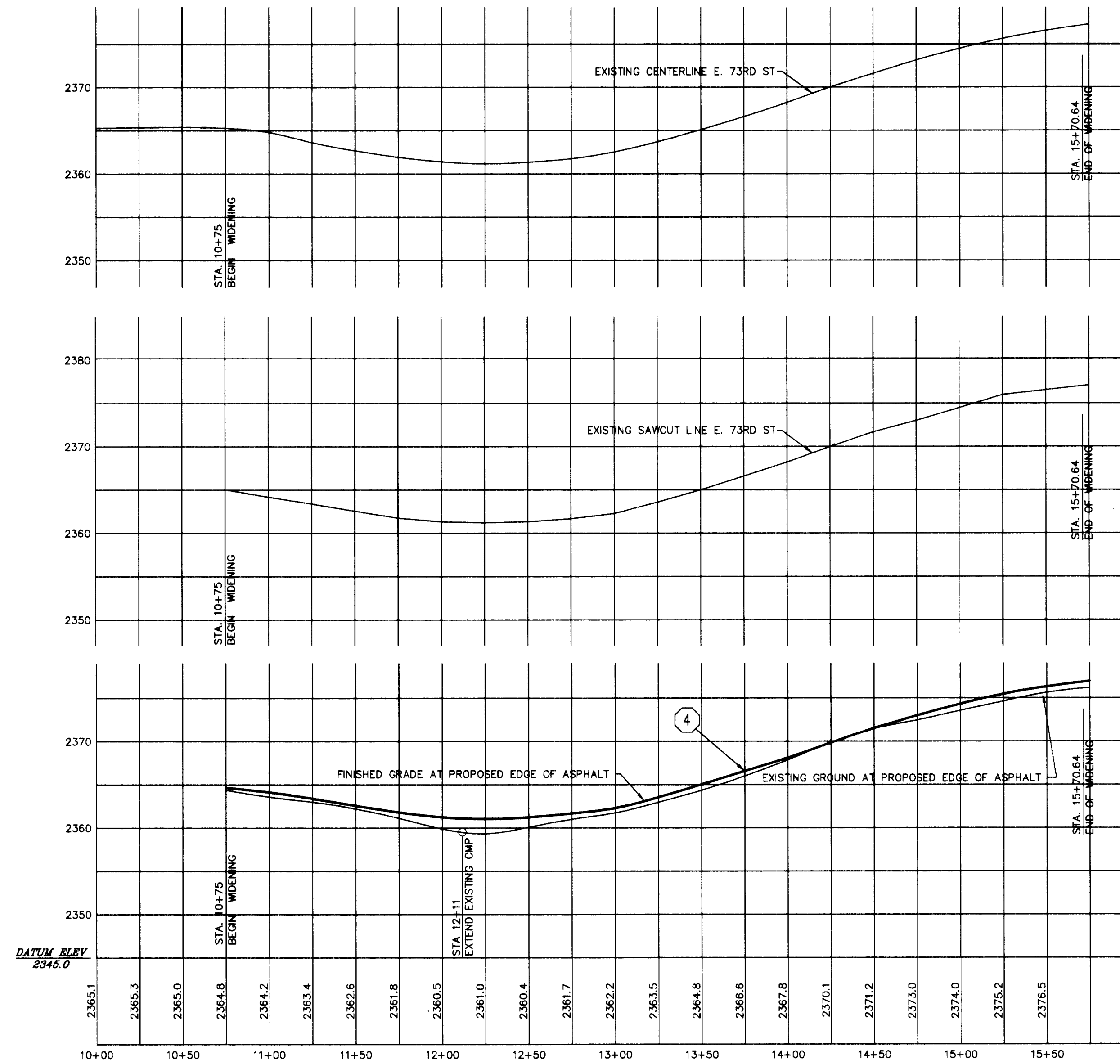
ER4) THE CONTRACTOR/DEVELOPER IS RESPONSIBLE FOR INSTALLING ROCK CONSTRUCTION ENTRIES AT ANY AND ALL LOCATIONS USED TO ENTER OR EXIT THE PROJECT SITE.

ER5) GEOTEXTILE FABRICS TO BE PLACED ON THE RIMS OF DRYWELLS, CATCH BASINS & INLETS UNTIL SUCH TIME THAT THE VEGETATION ON THE SITE IS ESTABLISHED AND THE THREAT OF SEDIMENT DEPOSITION INTO THE DRAINAGE SYSTEM IS MITIGATED. CONTRACTOR IS TO MONITOR THE RIMS AND CLEAR THEM OF SEDIMENT AS NEEDED.

ER6) FOR THE ANTICIPATED SITE CONDITIONS, THE CONTRACTOR SHALL INSPECT AND MAINTAIN THESE ESC MEASURES DAILY, AND SHALL MAINTAIN AND UPGRADE THESE MEASURES AS NECESSARY TO PREVENT SEDIMENT-LADEN WATER FROM EITHER FLOWING OFF THE SITE, OR INTO NEW/EXISTING STORM DRAINAGE FACILITIES, SUCH AS DRYWELLS, CULVERTS, OR GRAVEL GALLERIES. THE CONTRACTOR/DEVELOPER IS RESPONSIBLE FOR INSTALLING ROCK CONSTRUCTION ENTRIES

ER7) AT ANY AND ALL LOCATIONS USED TO ENTER OR EXIT THE PROJECT SITE, GEOTEXTILE FABRIC IS TO BE PLACED ON THE RIMS OF DRYWELLS, CATCH BASINS AND INLETS, WITH SEDIMENT FENCE (SEE DETAIL, THIS SHEET)

ER8) ALL DISTURBED AREAS MUST BE HYDROSEEDED WITH THE FOLLOWING DRYLAND GRASS MIX:
 20% FAWN TALL FESCUE
 19% HALLMARK ORCHARDGRASS
 19% COMMON SMOOTH BROMEGRASS
 15% VNS TETRAPOID RYEGRASS
 15% GINGER KENTUCKY BLUEGRASS
 5% CLAIR TIMOTHY
 7% MEDIUM RED CLOVER
 ALL PERCENTS SHOWN ARE PURE LIVE SEED



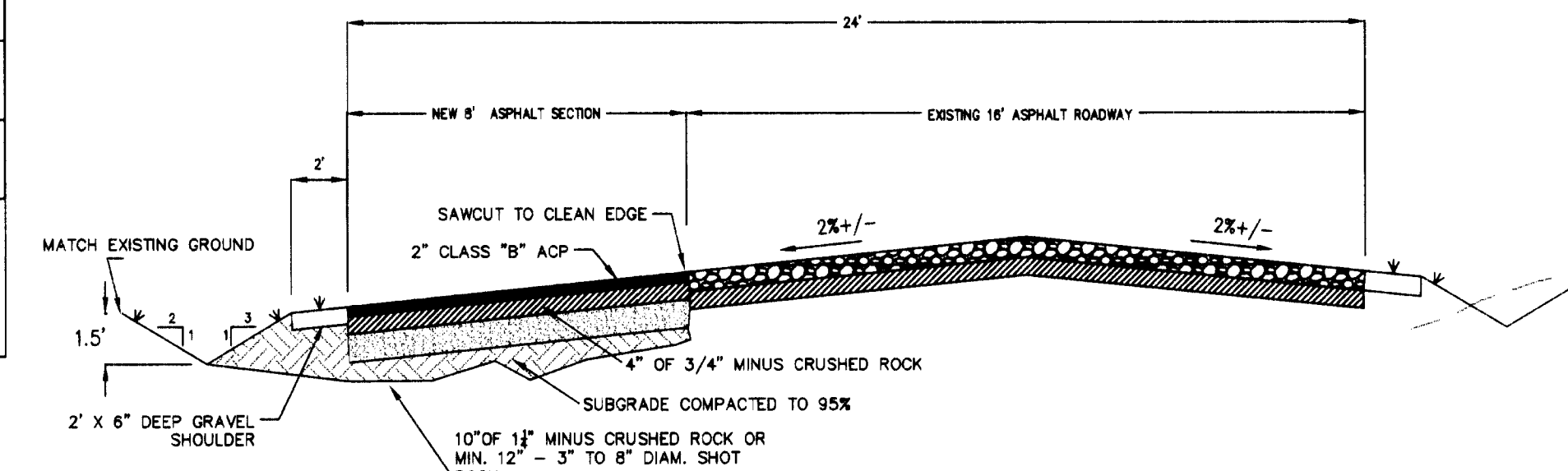
STANDARD NOTES FOR ROAD AND DRAINAGE PLANS

- 1) ALL WORK AND MATERIALS SHALL BE IN CONFORMANCE WITH THE "SPOKANE COUNTY ROAD STANDARDS.(3.22 PRIVATE ROADS),FEB. 2001
- 2) PRIOR TO SITE CONSTRUCTION, THE CONTRACTOR IS RESPONSIBLE FOR LOCATING UNDERGROUND UTILITIES. CALL THE UNDERGROUND UTILITY LOCATOION SERVICE AT 1-800-424-5555 BEFORE YOU DIG.
- 3) LOCATIONS OF EXISTING UTILITIES SHOWN IN THE PLANS ARE APPROXIMATE. THE CONTRACTOR SHALL BE RESPONSIBLE FOR LOCATING ALL UNDERGROUND UTILITIES. ANY CONFLICTING UTILITIES SHALL BE RELOCATED PRIOR TO CONSTRUCTION OF ROAD AND DRAINAGE FACILITIES.
- 4) THE CONTRACTOR IS REQUIRED TO HAVE A COMPLETE SET OF THE ACCEPTED ROAD AND DRAINAGE PLANS ON THE JOB SITE WHENEVER CONSTRUCTION IS IN PROGRESS.
- 5) IF THE CONTRACTOR DISCOVERS ANY DISCREPANCIES BETWEEN THE PLANS AND EXISTING CONDITIONS ENCOUNTERED, THE CONTRACTOR SHALL IMMEDIATELY NOTIFY THE DESIGN ENGINEER.
- 6) THE CONTRACTOR SHOULD TAKE PRECAUTIONS TO PROTECT THE INFILTRATION CAPAVITY OF STORMWATER FACILITIES (e.g. LINE THE FACILITY WITH FILTER FABRIC, OVER EXCAVATE UPON COMPLETION ON THE INFRASTRUCTURE, ETC.)
- 6) EXISTING TOPOGRAPHIC INFORMATION WAS PROVIDED BY HAHN ENGINEERING SURVEYING. IF ANY DISCREPANCIES ARE NOTED, CONTACT HAHN ENGINEERING (509) 467-1550.

CERTIFICATION STATEMENT

"THE DESIGN IMPROVEMENTS SHOWN ON THIS PLAN AND ANY ACCOMPANYING CALCULATIONS CONFORM TO THE APPLICABLE EDITIONS OF THE SPOKANE COUNTY STANDARDS FOR THE SPOKANE COUNTY GUIDELINES FOR STORMWATER MANAGEMENT. ALL DESIGN DEVIATIONS HAVE BEEN APPROVED BY THE SPOKANE COUNTY ENGINEER. I APPROVE THESE PLANS FOR CONSTRUCTION."

OWNER _____ DATE _____
 SCFD-4 _____ DATE _____

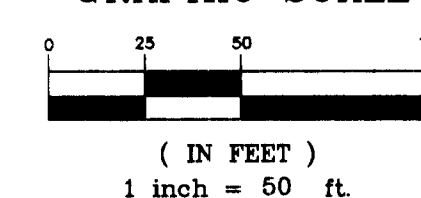


ROAD SECTION E. 73RD
 STATION : 10+75 TO 15+70.64 NTS

CONSTRUCTION NOTES

- 1) EXTEND EXISTING 18" CMP 14' TO BOTTOM DITCH
- 2) SAWCUT TO CLEAN EDGE
- 3) SEE ROAD SECTION THIS SHEET
- 4) SEE ROADWAY WIDENING SPREADSHEET FOR STATION/GRADES AT PROPOSED EDGE
- 5) INSTALL "SOUTH MEADOWS LANE" AND "E. 73RD AVE" STREET SIGNS PER SPOKANE COUNTY STANDARD PLAN A-16

GRAPHIC SCALE



811
 Know what's below.
 Call before you dig.
 1-800-424-5555
 OR
 456-8000

HAHN ENGINEERING, INC.
 905 E. HASTINGS RD.
 SPOKANE, WA. 99218
 (509) 467-1550 FAX (509) 467-8189
 www.hahnengr.com

EHL SHORT PLAT
EAST 73RD AVE WIDENING PROJECT

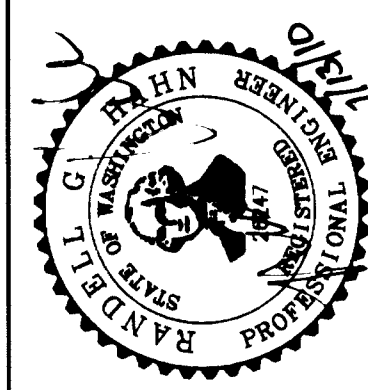
EAST 73RD AVE

STREET SHEET NO. C 1

NO.	DATE	BY	APP.	REVISION

DATE 7/14/2009
 DATE 7/14/2009

DRAWN: RGH
 DESIGNED: RGH
 APPROVED: RGH



CAD FILE: Jd 15, 2010 11:33AM W:\08-1381-1810\081311\03 rd road plan.dwg

SP 1515 Eng & Drainage Road

STANDARD NOTES FOR ROAD AND DRAINAGE PLANS

1) ALL WORK AND MATERIALS SHALL BE IN CONFORMANCE WITH THE "SPOKANE COUNTY ROAD STANDARDS.(3.22 PRIVATE ROADS),FEB. 2001

2) PRIOR TO SITE CONSTRUCTION, THE CONTRACTOR IS RESPONSIBLE FOR LOCATING UNDERGROUND UTILITIES. CALL THE UNDERGROUND UTILITY LOCATION SERVICE AT 1-800-424-5555 BEFORE YOU DIG.

3) LOCATIONS OF EXISTING UTILITIES SHOWN IN THE PLANS ARE APPROXIMATE. THE CONTRACTOR SHALL BE RESPONSIBLE FOR LOCATING ALL UNDERGROUND UTILITIES. ANY CONFLICTING UTILITIES SHALL BE RELOCATED PRIOR TO CONSTRUCTION OF ROAD AND DRAINAGE FACILITIES.

4) THE CONTRACTOR IS REQUIRED TO HAVE A COMPLETE SET OF THE ACCEPTED ROAD AND DRAINAGE PLANS ON THE JOB SITE WHENEVER CONSTRUCTION IS IN PROGRESS.

5) IF THE CONTRACTOR DISCOVERS ANY DISCREPANCIES BETWEEN THE PLANS AND EXISTING CONDITIONS ENCOUNTERED, THE CONTRACTOR SHALL IMMEDIATELY NOTIFY THE DESIGN ENGINEER.

6) THE CONTRACTOR SHOULD TAKE PRECAUTIONS TO PROTECT THE INFILTRATION CAPAVITY OF STORMWATER FACILITIES (e.g. LINE THE FACILITY WITH FILTER FABRIC, OVER EXCAVATE UPON COMPLETION ON THE INFRASTRUCTURE, ETC.)

6) EXISTING TOPOGRAPHIC INFORMATION WAS PROVIDED BY HAHN ENGINEERING SURVEYING. IF ANY DISCREPANCIES ARE NOTED, CONTACT HAHN ENGINEERING ☎ (509) 467-1550.

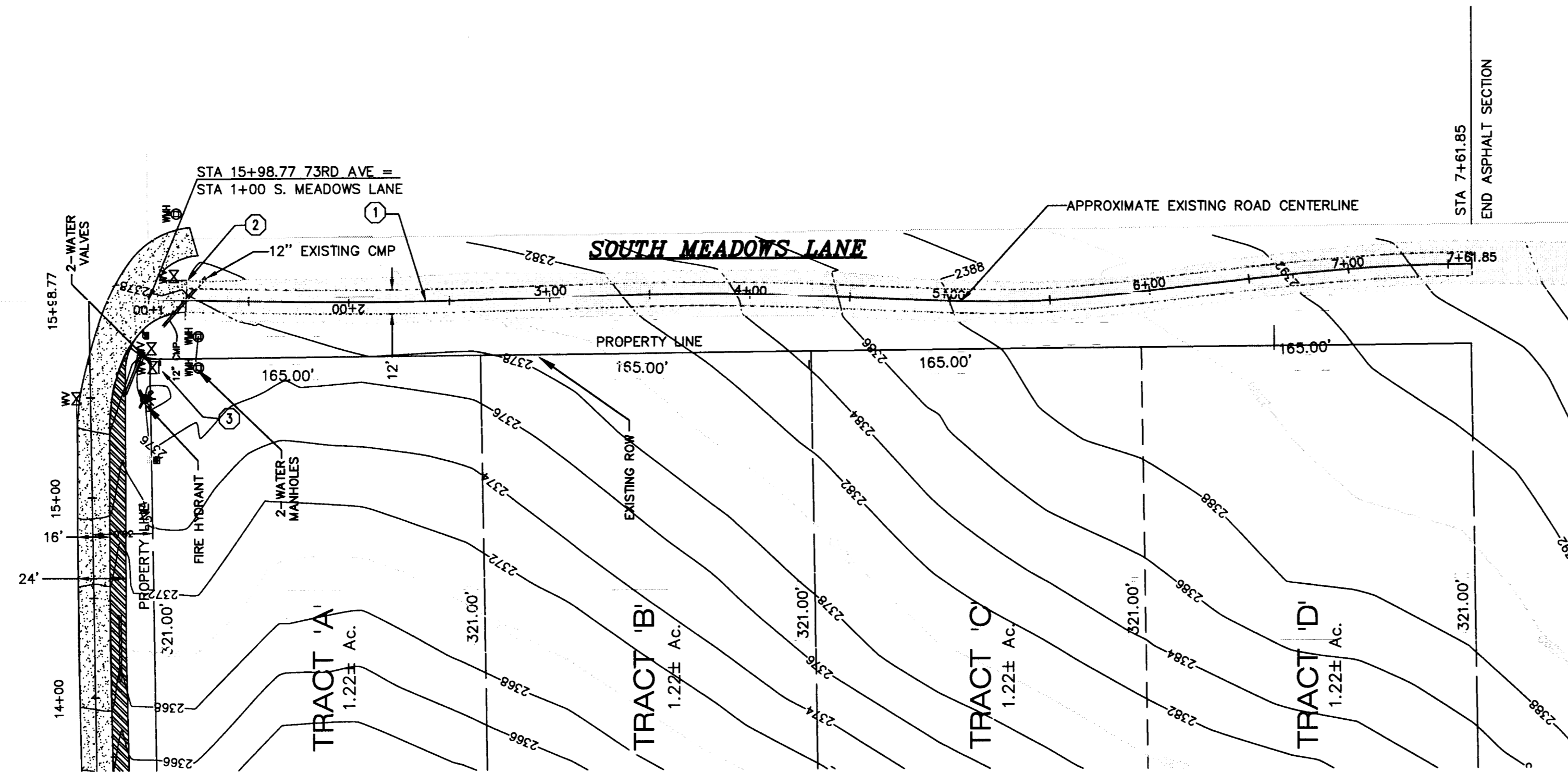
SOUTH MEADOWS LANE PLANS

LOCATED IN THE NE 1/4 OF THE SW 1/4
SECTION 10, T24N., R43E., W.M.
COUNTY OF SPOKANE, STATE OF WASHINGTON

LEGEND	
	- TEMPORARY BENCH MARK
	- WATER VALVE
	- FIRE HYDRANT
	- TELEPHONE RISER
	- WATER MANHOLE
	- CABLE RISER
	- MAIL BOX
	- TRANSFORMER
	- EXISTING FENCE
	- GAS LINE

NO.	DATE	BY	APP.	REVISION

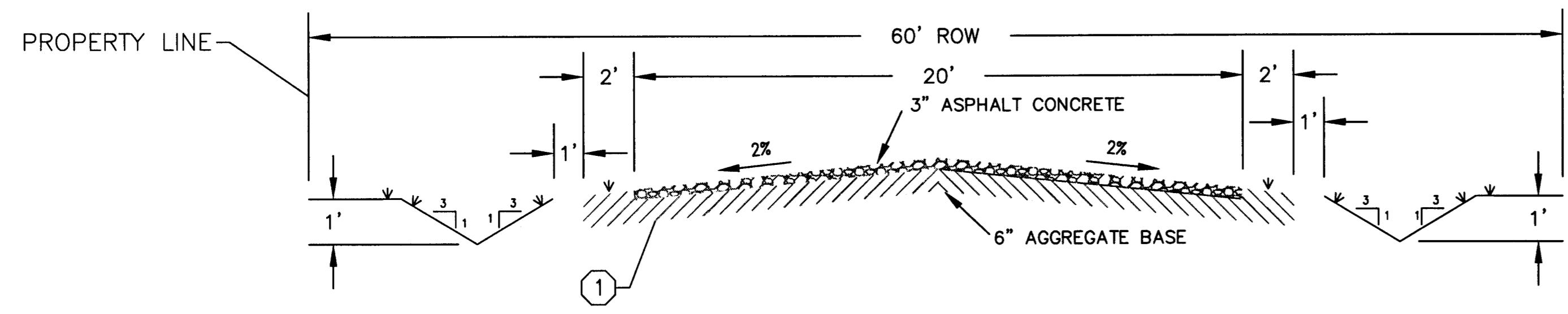
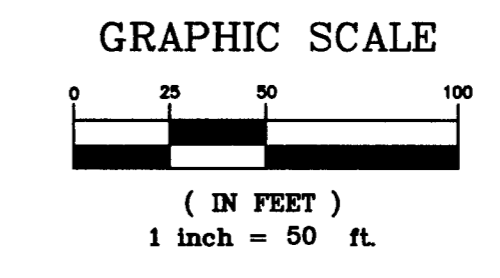
HAHN ENGINEERING, INC.
905 E. HASTINGS RD.
SPOKANE, WA. 99218
(509) 467-1550 FAX (509) 467-8189
www.hahnengr.com



CONSTRUCTION NOTES

- CONSTRUCT 3" ASPHALT CONCRETE OVER 6" AGGREGATE BASE
- SAWCUT CLEAN EDGE
- INSTALL "SOUTH MEADOW LANE" AND "E 73RD AVE" STREET SIGNS PER SPOKANE COUNTY STANDARD PLAN A-16

SPOKANE COUNTY ENGINEERS OFFICE
OFFICIAL PUBLIC DOCUMENT ORIGINAL
CONSTRUCTION PLANS
PROJECT #: SP 1515
DATE ACCEPTED: 8/20/09
ACCEPTANCE EXPIRES: 3/22/11
PROJECT LANE MILES PUBLIC: -
PROJECT LANE MILES PRIVATE: -
CONSTRUCTION DOCUMENTATION AND CERTIFIED RECORD DRAWINGS, "AS-BUILT" ARE REQUIRED PRIOR TO COUNTY ACCEPTANCE AND ESTABLISHMENT OF THE ROADS AND DRAINAGE FACILITIES FOR MAINTENANCE.
PERMIT REQUIRED! (509) 477-3600
NOTIFY PERMIT ENGINEER 2 BUSINESS DAYS PRIOR TO CONSTRUCTION.



PRIVATE ROAD SECTION
STA. 1+00 TO 7+61.85 NTS

NOTE:
1. ALL STATIONING IS STREET CENTERLINE.

CERTIFICATION STATEMENT

"THE DESIGN IMPROVEMENTS SHOWN ON THIS PLAN AND ANY ACCOMPANYING CALCULATIONS CONFORM TO THE APPLICABLE EDITIONS OF THE SPOKANE COUNTY STANDARDS FOR THE SPOKANE COUNTY GUIDELINES FOR STORMWATER MANAGEMENT. ALL DESIGN DEVIATIONS HAVE BEEN APPROVED BY THE SPOKANE COUNTY ENGINEER. I APPROVE THESE PLANS FOR CONSTRUCTION."

OWNER: Craig Ehlo DATE: 8-20-09
SCFD-48 Deputy Chief DATE: 8-20-09

UNDERGROUND SERVICE ALERT
ONE-CALL NUMBER
(800)424-5555
CALL TWO BUSINESS DAYS BEFORE YOU DIG

STREET	SHEET NO.	C	2

SP1515 Eng Road & Drainage