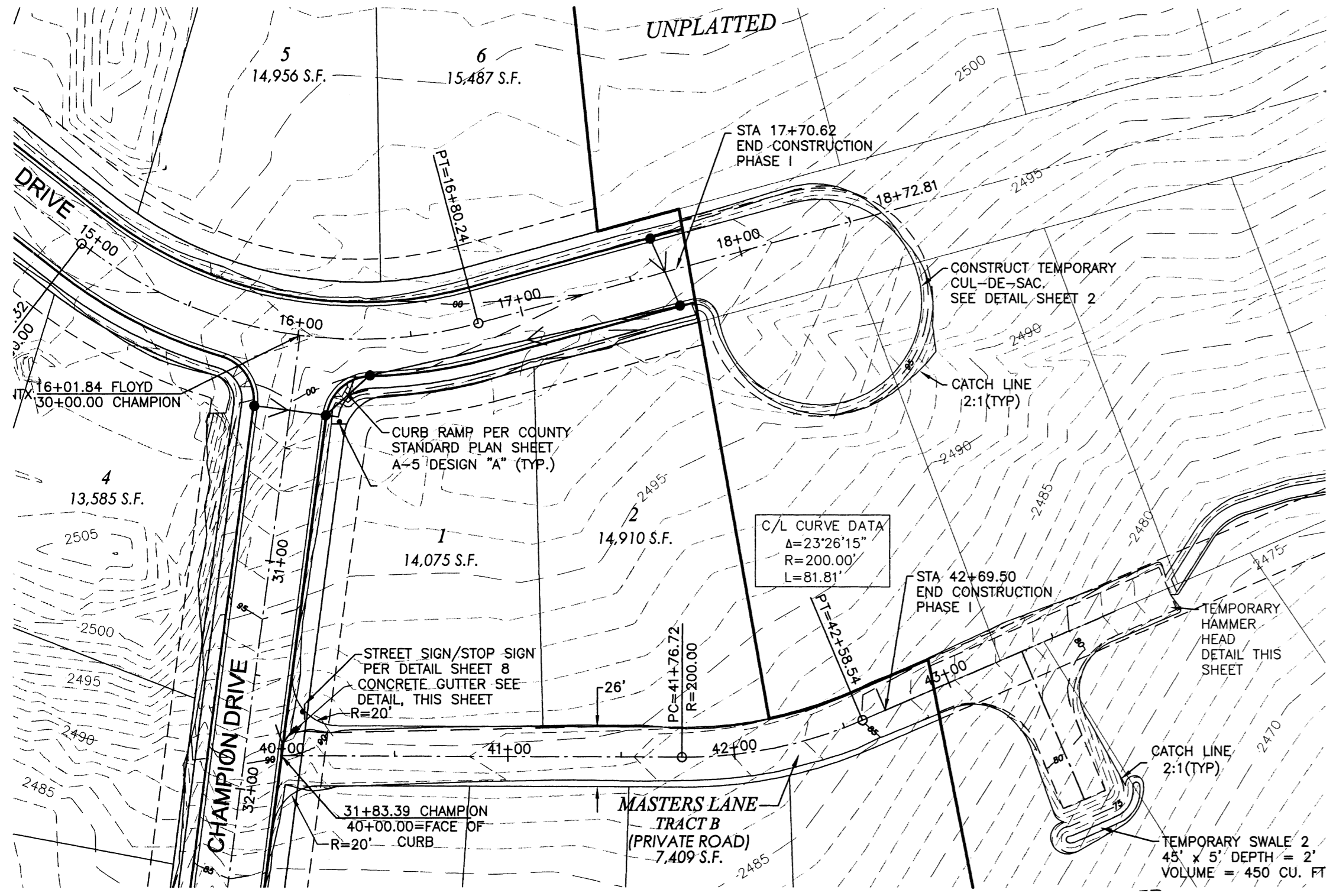
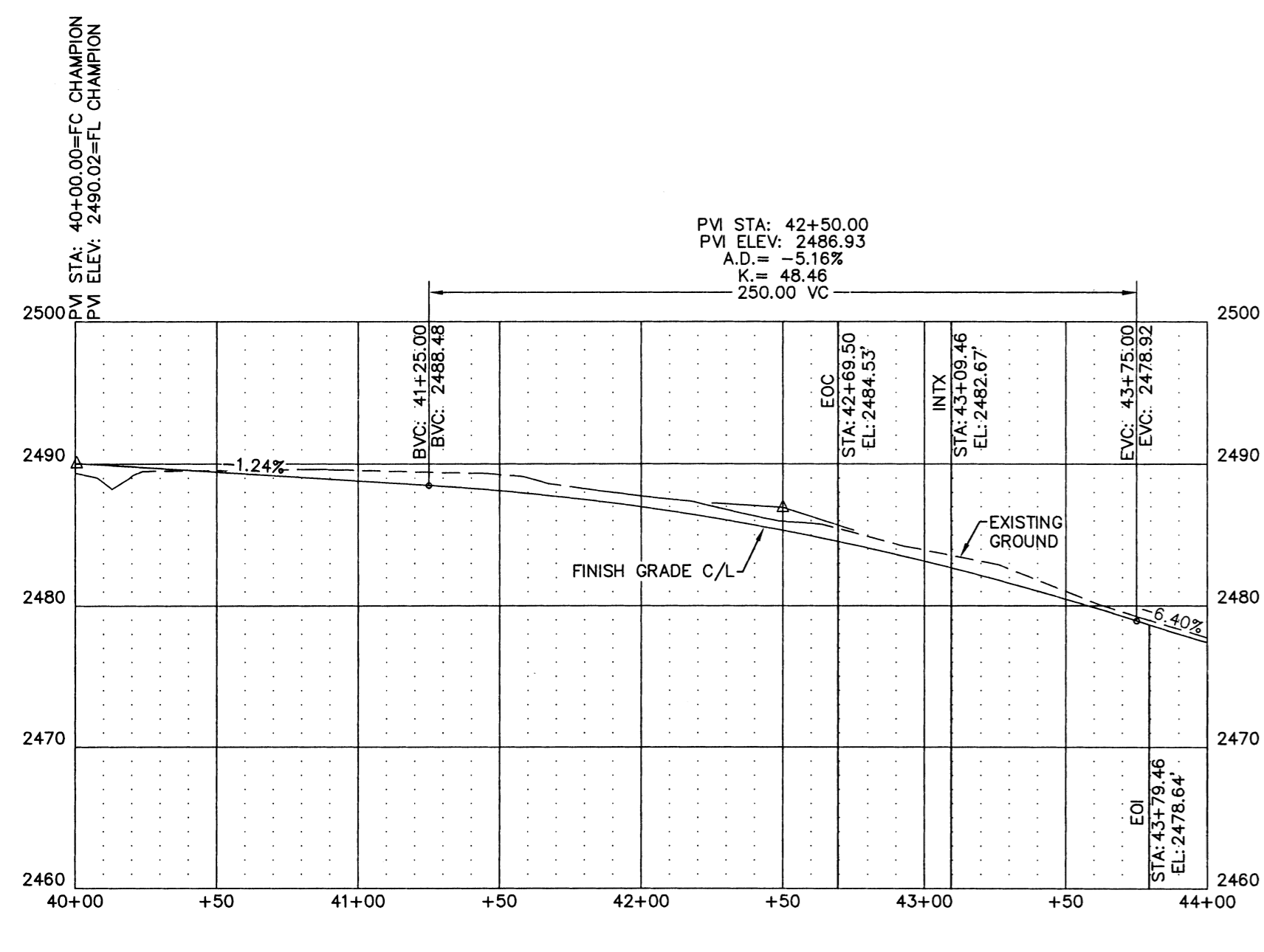


**LEGEND**

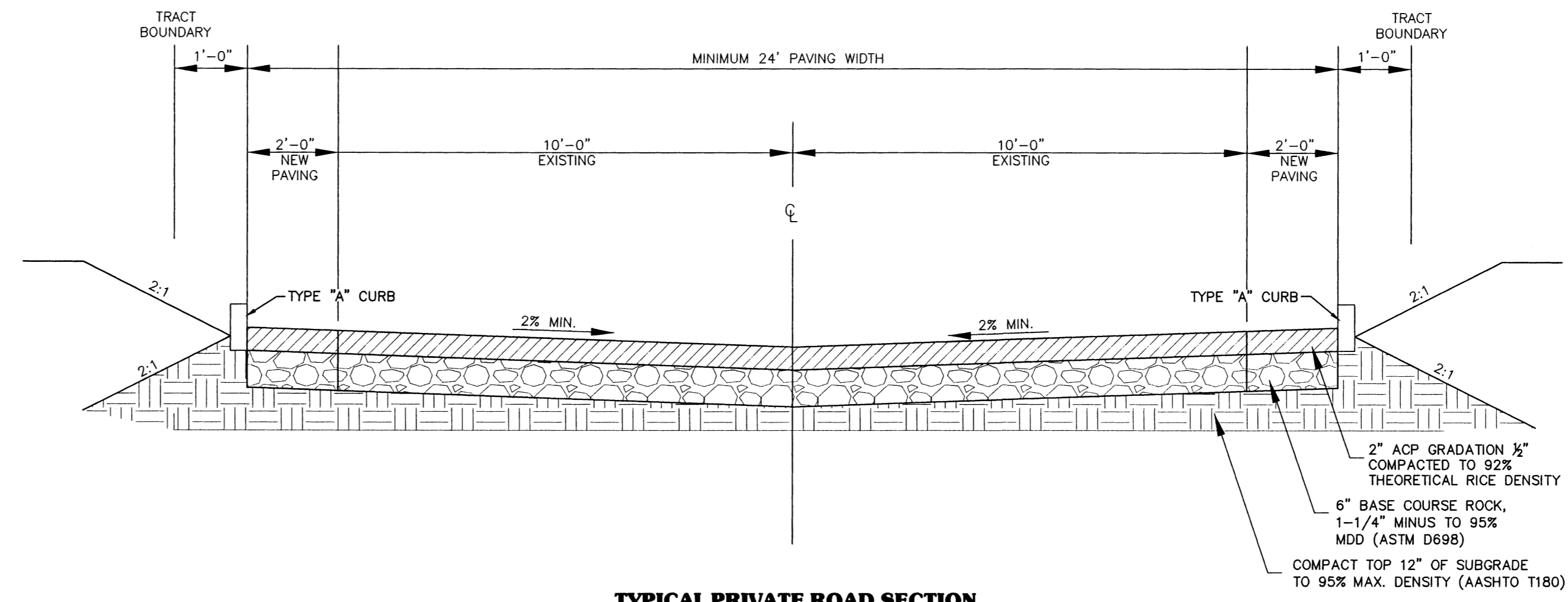
- INTX = INTERSECTION
- CR = CURB RETURN
- TC = TOP OF CURB
- FL = FLOW LINE
- ER = EDGE OF ROAD
- BOC = BEGINNING OF CONSTRUCTION
- EOC = END OF CONSTRUCTION
- = UTILITY POLE
- ▲ = UTILITY SIGN
- = PROPOSED STREET SIGN
- ↓ = GUY WIRE
- = TRANSFORMER
- = NEW SEWER MANHOLE
- = EXISTING SEWER MANHOLE
- = STORM DRAIN
- = SANITARY SEWER SERVICE
- SS— = SANITARY SEWER
- W— = WATER SERVICE
- W— = WATER LINE
- SD— = STORM DRAIN
- OU— = OVERHEAD ELECTRIC



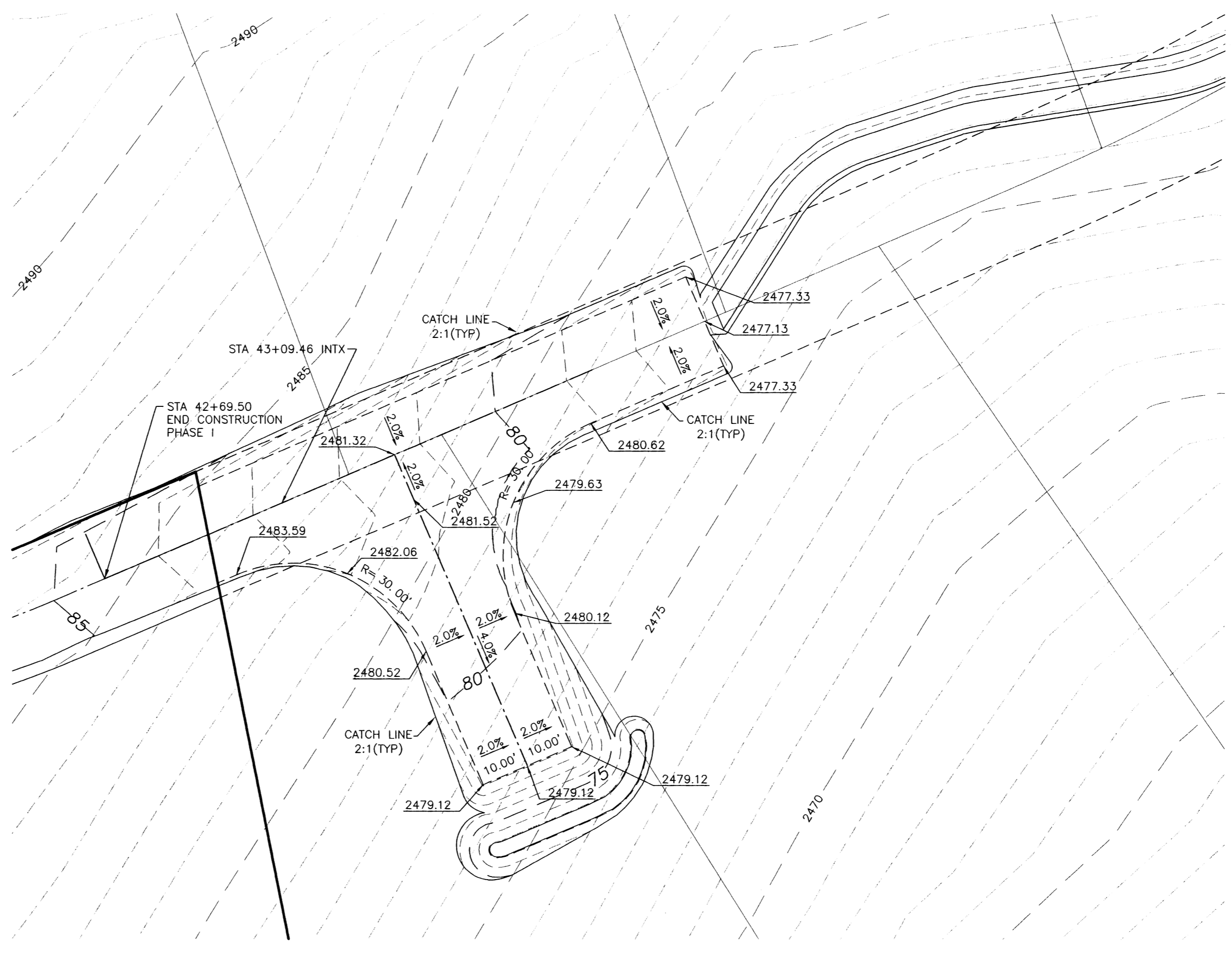
**MASTER LANE PLAN VIEW**  
SCALE: 1"=50' HORZ.



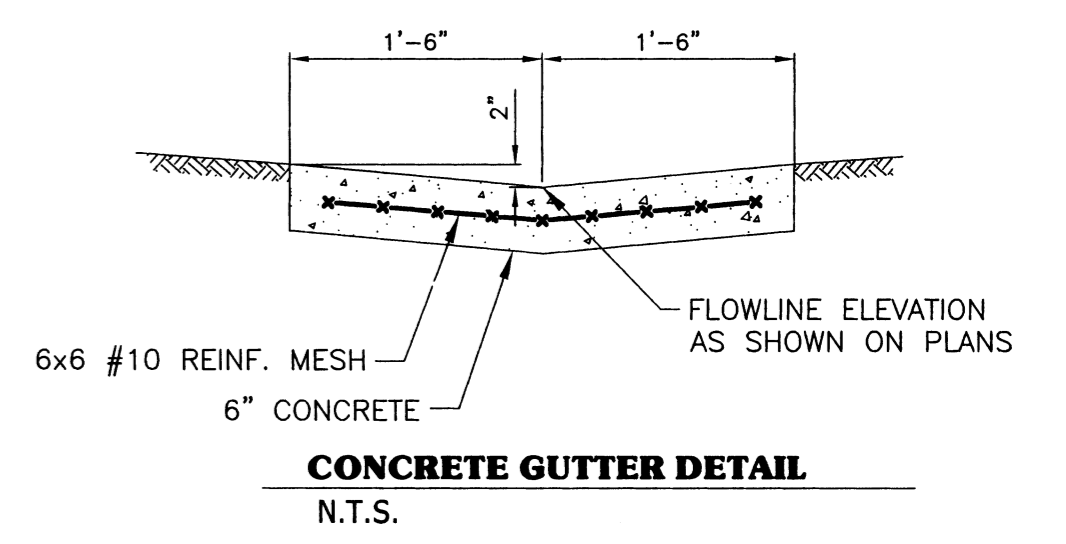
**MASTERS LANE STA 40+00.05 TO 44+62.50**  
SCALE: 1"=50' HORZ.  
1"=10' VERT.



**TYPICAL PRIVATE ROAD SECTION**  
1"=5'



**TYPICAL TEMPORARY HAMMER HEAD**  
1"=20'



**CONCRETE GUTTER DETAIL**  
N.T.S.

**SPOKANE COUNTY ENGINEERS OFFICE**  
OFFICIAL PUBLIC DOCUMENT ORIGINAL  
**CONSTRUCTION PLANS**  
PROJECT #: P-2040A  
DATE ACCEPTED: 10-10-17  
ACCEPTANCE EXPIRES: 10-10-19  
PROJECT LANE MILES PUBLIC: 0.15  
CONSTRUCTION DOCUMENTATION AND CERTIFIED  
RECORD DRAWINGS, "AS-BUILT" ARE REQUIRED PRIOR TO COUNTY ACCEPTANCE AND ESTABLISHMENT OF THE ROADS AND DRAINAGE FACILITIES FOR MAINTENANCE.  
PERMIT REQUIRED! (509) 477-3600  
NOTIFY PERMIT ENGINEER 2 BUSINESS DAYS PRIOR TO CONSTRUCTION

*\* Accepted to convert constructed alley to private road per design deviation accepted 10-10-17.*

BY	REVISIONS	DATE	PROJ.	FROM	AS BUILT	TO	ACCEPT

BENCH MARK DATUM	SCALE	DATE	STAFF
BM: NAVD88	HORIZONTAL 50'	9/12/15	DRAWN JDH
ELEVATION: 2457.86'	VERTICAL 10'	9/12/15	CHECKED GM
LOCATION: T.B.M. #1			APPROVED



**ADAMS & CLARK, Inc.**  
www.adamsandclark.com  
1720 W. Fourth Ave.  
Spokane, WA 99201  
(509) 747-4800 F(509) 747-8913

**MASTERS LANE**  
STA 40+00 TO 43+79  
PLAN AND PROFILE  
WEST TERRACE FIFTH ADDITION PHASE I

TYPE OF IMPROVEMENT: STREET	
PROJECT NUMBER	PLAN NUMBER
2014-01-084	