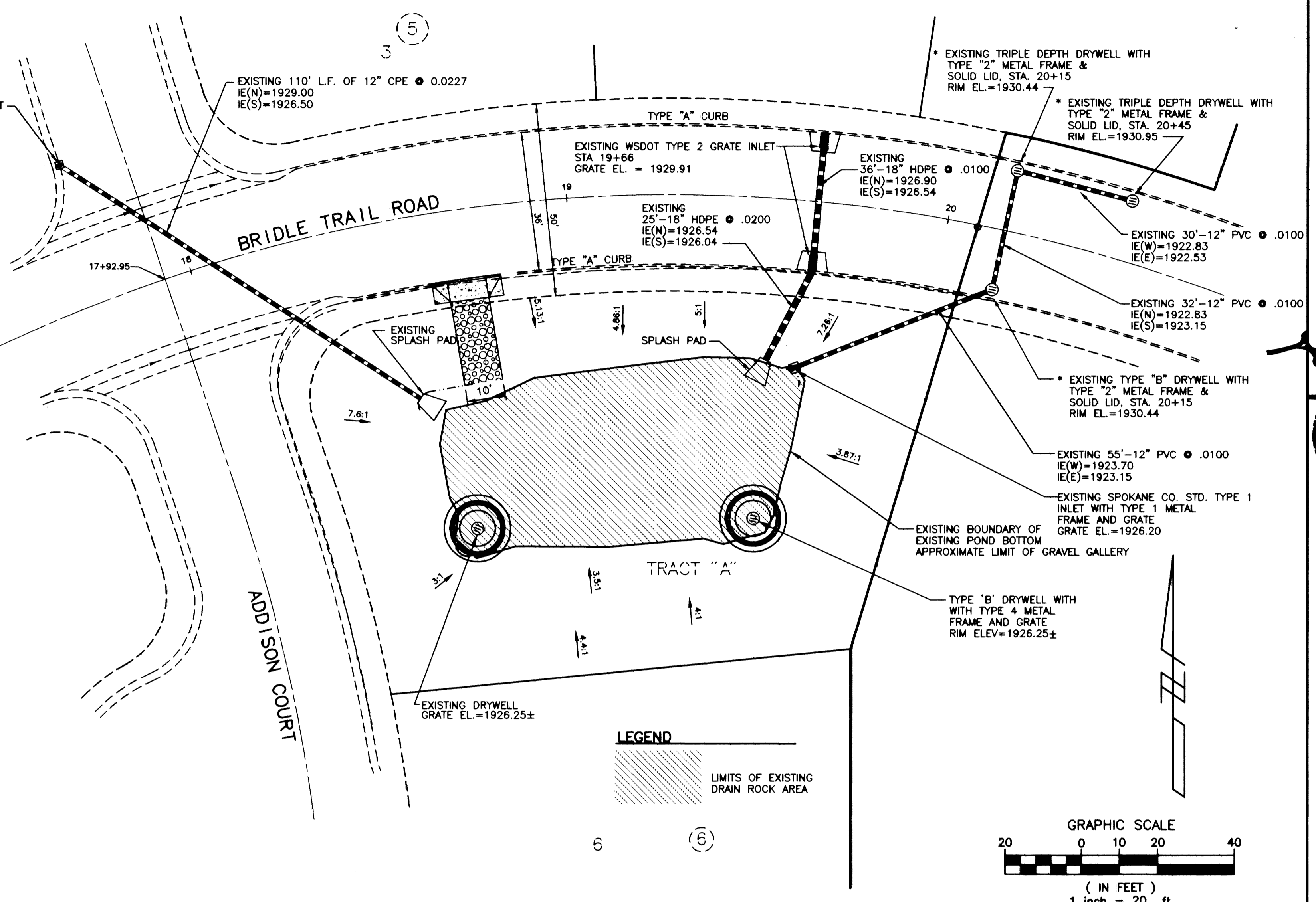


**SPOKANE COUNTY ENGINEERS OFFICE**  
OFFICIAL PUBLIC DOCUMENT ORIGINAL  
**CONSTRUCTION PLANS**  
PROJECT #: P 1624 A  
DATE ACCEPTED: 10-6-99  
ACCEPTANCE EXPIRES: 5  
PROJECT LANE MILES PUBLIC: 0  
PROJECT LANE MILES PRIVATE: 0  
CONSTRUCTION DOCUMENTATION AND CERTIFIED RECORD DRAWINGS, "AS-BUILTS" ARE REQUIRED PRIOR TO COUNTY ACCEPTANCE AND ESTABLISHMENT OF THE ROADS AND DRAINAGE FACILITIES FOR MAINTENANCE.  
PERMIT REQUIRED! (509) 477-3600  
NOTIFY PERMIT ENGINEER 2 BUSINESS DAYS PRIOR TO CONSTRUCTION

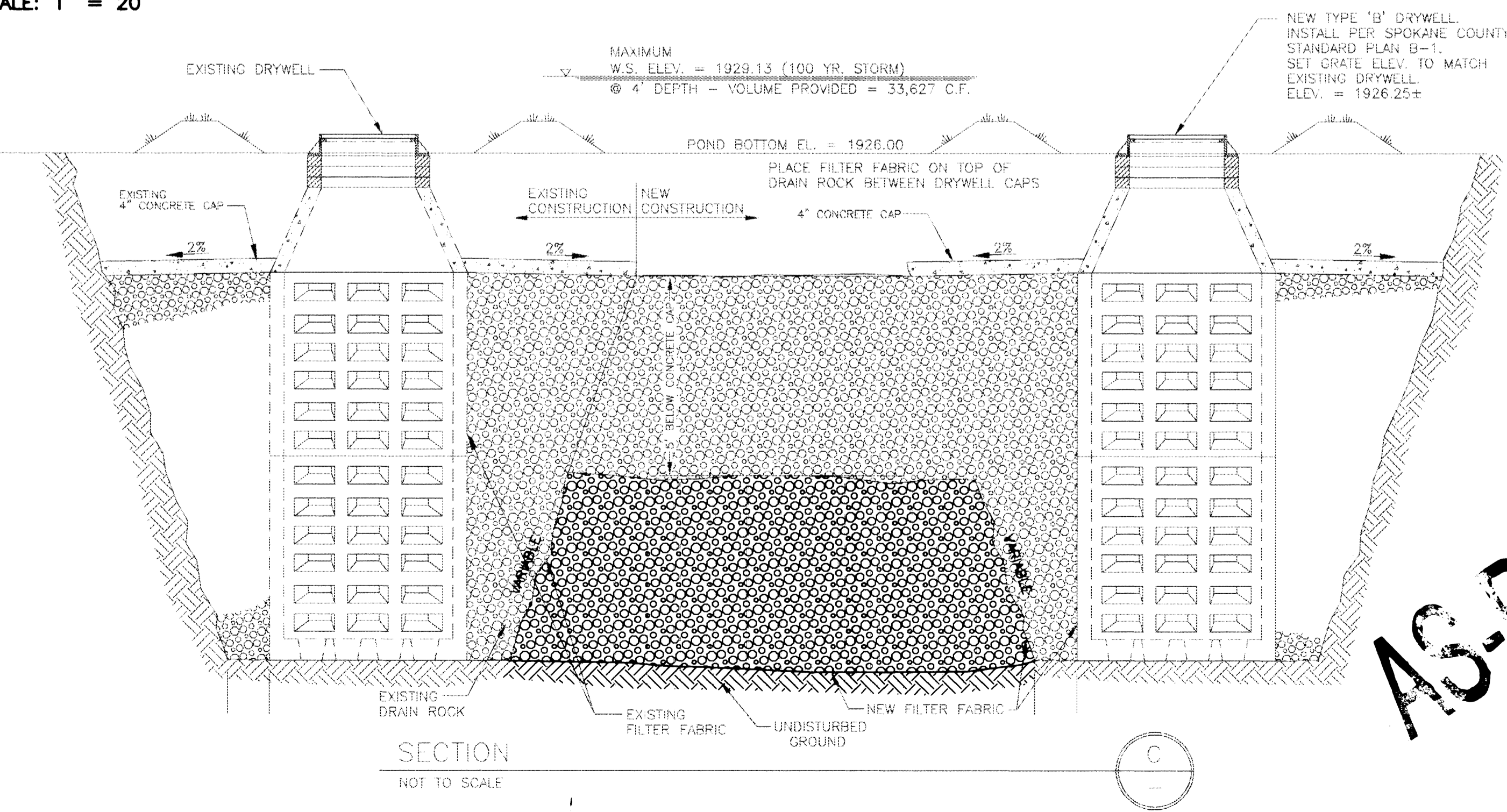
**PLAN CHANGE TO ELIMINATE BEAMS ON STORMWATER INLETS**  
\* PLAN SET APPROVAL EXPIRED 8/26/99 FOR POND REVISION.



**REVISIED RETENTION POND DETAIL**  
SCALE: 1" = 20'

- DRYWELL AND GRAVEL SEQUENCE OF CONSTRUCTION**
1. PRECONSTRUCTION MEETING AT INLAND PACIFIC ENGINEERING (458-6840, TODD WHIPPLE, P.E.) WITH ENGINEER AND CONTRACTOR. CONTRACTOR SHALL PREPARE AND SUBMIT A SCHEDULE OF WORK FOR APPROVAL TO ENGINEER AND SPOKANE COUNTY.
  2. EXCAVATE POND BOTTOM AREA FOR NEW DRYWELL AND DRAIN ROCK TO LIMITS SHOWN. REMOVE EXISTING DRAIN ROCK AS REQUIRED. CONTRACTOR SHALL MAKE EVERY EFFORT TO PRESERVE THE EXIST. DRYWELL CAP. MAXIMUM DEPTH FOR DRAIN ROCK SHALL BE 5' BELOW DRYWELL CAP AND ENCOMPASS THE ENTIRE POND BOTTOM AREA.
  3. PLACE FILTER FABRIC OVER OUTER SURFACE OF EXCAVATED AREA.
  4. SET NEW DRYWELL IN PLACE AND BACKFILL WITH GRAVEL AND COMPACT PER SPOKANE COUNTY STANDARD PLAN B-1. APPROXIMATE QUANTITY OF ROCK:  $(6,750)(5)/27 = 1,250$  CUBIC YARDS. **ACTUAL QUANTITY OF ROCK PLACED = 1300 C.Y.**
  5. POUR CONCRETE CAP FOR NEW DRYWELL AND REPAIR EXISTING DRYWELL CAP IF NECESSARY.
  6. INSTALL FILTER FABRIC ON TOP OF DRAIN ROCK, BETWEEN THE DRYWELL CAPS.
  7. BACKFILL WITH NATIVE MATERIAL, ABOVE DRAIN ROCK AND DRYWELL CAPS WITH CLEAN TOP SOIL.
  8. REPLACE SOIL AND IRRIGATION SYSTEM AS REQUIRED.
  9. CONTACT ENGINEER'S OFFICE FOR DRYWELL TESTING AFTER CONSTRUCTION IS COMPLETE.

THE DESIGN IMPROVEMENTS SHOWN IN THIS SET OF PLANS AND CALCULATIONS CONFORM TO APPLICABLE EDITIONS OF THE SPOKANE COUNTY STANDARDS FOR ROAD AND SEWER CONSTRUCTION AND THE SPOKANE COUNTY GUIDELINES FOR STORMWATER MANAGEMENT. ALL DESIGN DEVIATIONS HAVE BEEN APPROVED BY THE SPOKANE COUNTY ENGINEER. I APPROVE THESE PLANS FOR CONSTRUCTION.



**AS-BUILT**

**WESTWOOD ESTATES NO. 2 - PHASE II**  
**REVISED RETENTION POND**  
**DRAINAGE**

SHEET 1 OF 1  
JOB NUMBER 97038

DATE: 8/18/98  
DRAWN BY: JFC, SKM, MLH  
DESIGNED BY: TRW, SPS, SKM  
CHECKED BY: TRW

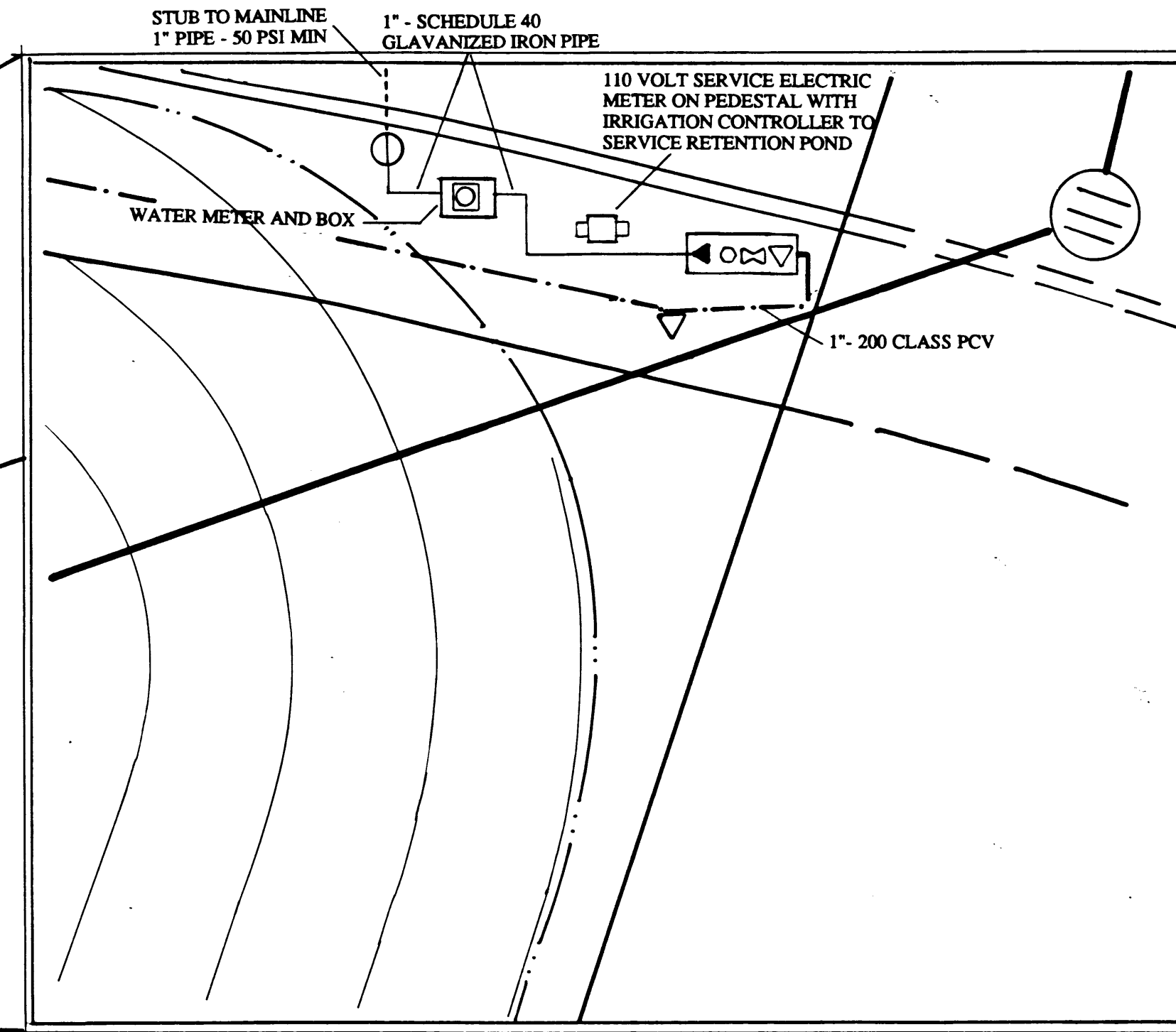
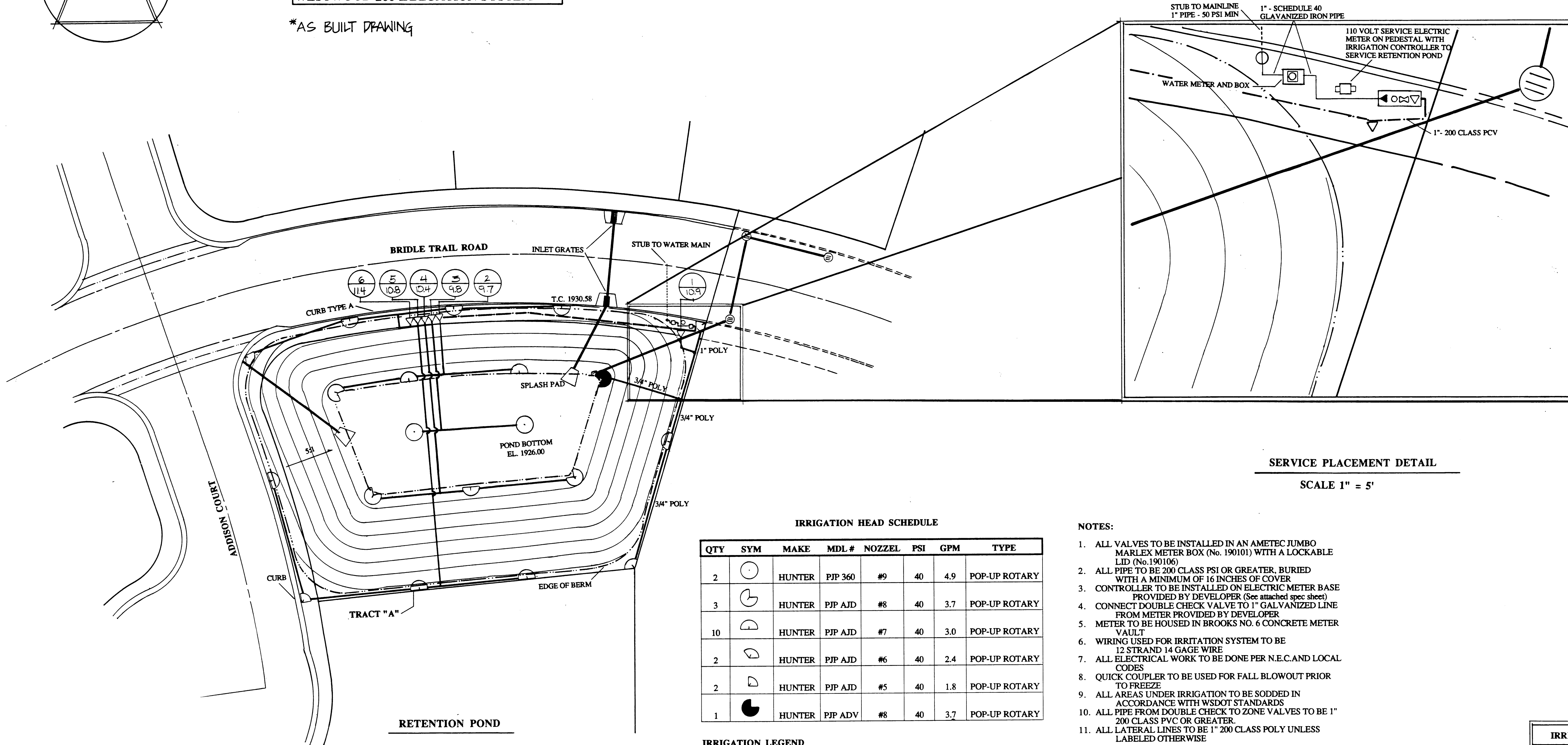
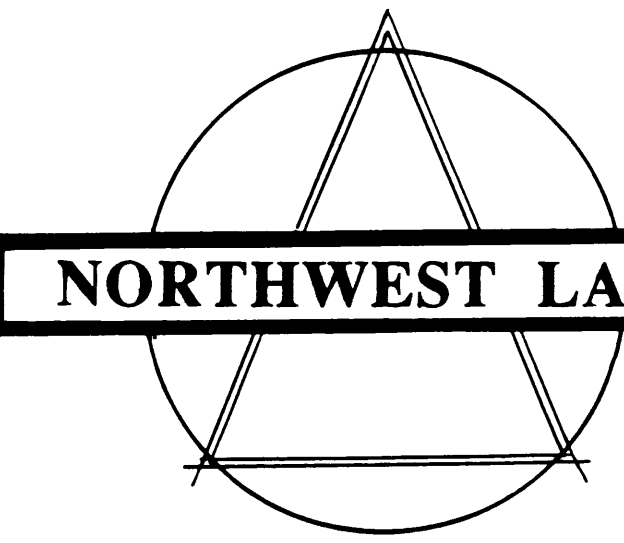
SCALE: HORIZONTAL: 1" = 20'  
VERTICAL: N.A.

INLAND PACIFIC ENGINEERING  
707 West 7th, Suite 200  
Spokane, WA 99204  
(509) 458-6840  
FAX: (509) 458-6844

REGISTERED PROFESSIONAL ENGINEER  
TODD WHIPPLE  
No. 25482  
EXPIRES 9/24/2000

C:\Users\pmp\137038\DWG\CONSTR\01.DWG Plot Oct 04 03:30:17 1999 MO

\*AS BUILT DRAWING



SERVICE PLACEMENT DETAIL

SCALE 1" = 5'

IRRIGATION HEAD SCHEDULE

QTY	SYM	MAKE	MDL #	NOZZEL	PSI	GPM	TYPE
2	⊙	HUNTER	PIP 360	#9	40	4.9	POP-UP ROTARY
3	⊙	HUNTER	PIP AJD	#8	40	3.7	POP-UP ROTARY
10	⊙	HUNTER	PIP AJD	#7	40	3.0	POP-UP ROTARY
2	⊙	HUNTER	PIP AJD	#6	40	2.4	POP-UP ROTARY
2	⊙	HUNTER	PIP AJD	#5	40	1.8	POP-UP ROTARY
1	⊙	HUNTER	PIP ADV	#8	40	3.7	POP-UP ROTARY

IRRIGATION LEGEND

- ▽ 1" RAINBIRD DV-100 AUTOMATIC VALVE
- ⊙ POINT OF CONNECTION AT CURB BOX
- ⊗ 805 Y 1" DOUBLE CHECK VALVE AND 1/2" DRAIN VALVE HOUSED IN METER BOX
- ◀ 1" FEBCO BALL ISOLATION VALVE
- 1" QUICK COUPLER
- ④ ZONE NUMBER
- ④/10.4 SYSTEM IDENTIFICATION
- G.P.M.
- ☐ RAINBIRD RC7C RAIN TIGHT CONTROLLER MOUNTED ON ELECTRIC METER PEDESTAL (See attached spec sheets)
- POLY 200 PSI NSF GRADE PIPE
- - - 200 CLASS PVC MAINLINE

NOTES:

1. ALL VALVES TO BE INSTALLED IN AN AMETEC JUMBO MARLEX METER BOX (No. 190101) WITH A LOCKABLE LID (No. 190106)
2. ALL PIPE TO BE 200 CLASS PSI OR GREATER, BURIED WITH A MINIMUM OF 16 INCHES OF COVER
3. CONTROLLER TO BE INSTALLED ON ELECTRIC METER BASE PROVIDED BY DEVELOPER (See attached spec sheet)
4. CONNECT DOUBLE CHECK VALVE TO 1" GALVANIZED LINE FROM METER PROVIDED BY DEVELOPER
5. METER TO BE HOUSED IN BROOKS NO. 6 CONCRETE METER VAULT
6. WIRING USED FOR IRRIGATION SYSTEM TO BE 12 STRAND 14 GAGE WIRE
7. ALL ELECTRICAL WORK TO BE DONE PER N.E.C. AND LOCAL CODES
8. QUICK COUPLER TO BE USED FOR FALL BLOWOUT PRIOR TO FREEZE
9. ALL AREAS UNDER IRRIGATION TO BE SODDED IN ACCORDANCE WITH WSDOT STANDARDS
10. ALL PIPE FROM DOUBLE CHECK TO ZONE VALVES TO BE 1" 200 CLASS PVC OR GREATER
11. ALL LATERAL LINES TO BE 1" 200 CLASS POLY UNLESS LABELED OTHERWISE

IRRIGATION SYSTEM PLAN APPROVAL

BY \_\_\_\_\_ DATE \_\_\_\_\_

ARCHITECTURAL SEAL

STATE OF WASHINGTON  
REGISTERED  
LANDSCAPE ARCHITECT  
BY *Robert L. Woerner* DATE *4/30/93*  
ROBERT L. WOERNER  
CERTIFICATE NO. 43