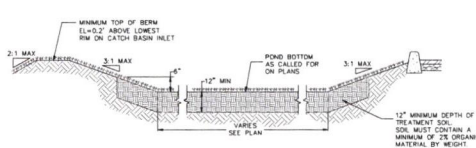
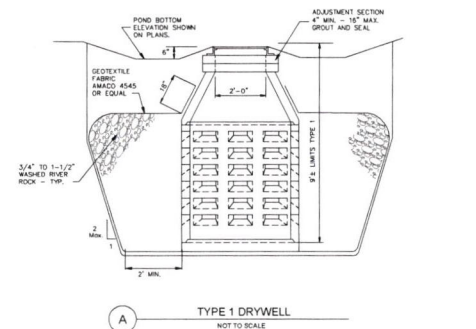


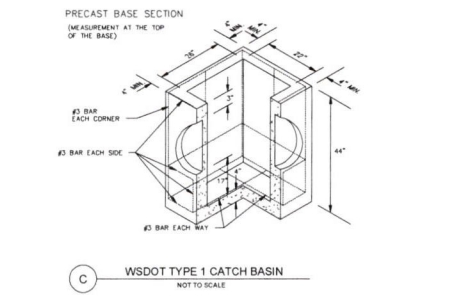
EXISTING POND A INFORMATION
 POND AREA = 105,541 SF
 TREATMENT VOL. REQ'D = 4,398 CF
 TREATMENT VOL. PROV. = 4,446 CF
 TOTAL STORAGE CAPACITY = 10,004 CF

REVISED POND A INFORMATION
 POND AREA = 105,541 SF
 TREATMENT VOL. REQ'D = 4,398 CF
 TREATMENT VOL. PROV. = 4,440 CF
 TOTAL STORAGE CAPACITY = 9,960 CF



NOTE:
 CONTRACTOR SHALL VERIFY THE TOPSOIL MATERIAL INSTALLED IN THE BOTTOMS OF THE POND ALLOW FOR THE POND TO DRAIN WITHIN 72 HOURS. IF THE PONES DO NOT DRAIN, THE CONTRACTOR WILL BE RESPONSIBLE FOR REMOVING AND REPLACING THE SOIL AND TOPSOIL WITH A FREE DRAINING MATERIAL.

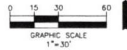
THE FLOOR OF A GRASSED PERCOLATION AREA (GPA) SHALL INCLUDE THE LEVEL PORTION OF THE FLOOR OF THE SWALE AND THE SLOPES OF THE SWALE UP TO THE GPA OVERFLOW ELEVATION OR TOP OF DRYWELL. THE TOPSOIL LOCATED IN THE FLOOR OF THE GPA SWALE SHALL BE A MEDIUM TO WELL-DRAINING MATERIAL WITH A MINIMUM INFILTRATION RATE OF 0.25 INCHES PER HOUR. THE SWALE FLOOR MATERIAL SHALL BE INSTALLED TO A NATIVE SOIL STRATUM WHICH ALSO MEETS OR EXCEEDS THE MINIMUM PERCOLATION RATE OF 0.15 INCHES PER HOUR.



GRADING NOTE
 1. ON-SITE GRADING SHALL BE IN ACCORDANCE WITH THE APPROVED GRADING AND EROSION & SEDIMENT CONTROL PLANS. ANY IMPORT/EXPORT OF MATERIAL SHALL BE FROM AN PRE-APPROVED SOURCE/DESTINATION AND COORDINATED WITH THE SPOKANE COUNTY DEPARTMENT OF BUILDING AND PLANNING AT 477-3076. GRADING ON THIS SITE OR OTHER INVOLVED SITE MUST COMPLY WITH FEDERAL, STATE AND LOCAL DEVELOPMENT REGULATIONS, INCLUDING BUT NOT LIMITED TO GRADING PERMITS, TIMBER HARVEST PERMITS, RIGHT-OF-WAY AND MAINT. PERMITS, SEPA, CRITICAL AREAS, FLOOD PLANS, DESIGNATED DRAINAGE WAYS, ETC.

ESTIMATED CUT/FILL QUANTITIES
 BASED ON THIS GRADING PLAN AND ANTICIPATED SITE IMPROVEMENTS THE FOLLOWING CUT AND FILL QUANTITIES CAN BE ANTICIPATED:

CUT: APPROXIMATELY 8,100 CUBIC YARDS
 FILL: APPROXIMATELY 8,100 CUBIC YARDS
 NET EXPORT: APPROXIMATELY 0 CUBIC YARDS



NO.	Revised	Change	Description

GRADING PLAN
MANUFACTURING / WAREHOUSE BUILDING
 WEMCO AEROSPACE MANUFACTURING DIVISION
 5510 W. THORPE ROAD, SPOKANE COUNTY, WASHINGTON

W. A. ANDREWS
 P.E. No. 10003, State of Washington
 Phone: 509.327.4477

DATE:	10/9/2020
PROJECT:	WEMCO0006
DESIGNED BY:	KMG
CHECKED BY:	
SCALE:	

C-100