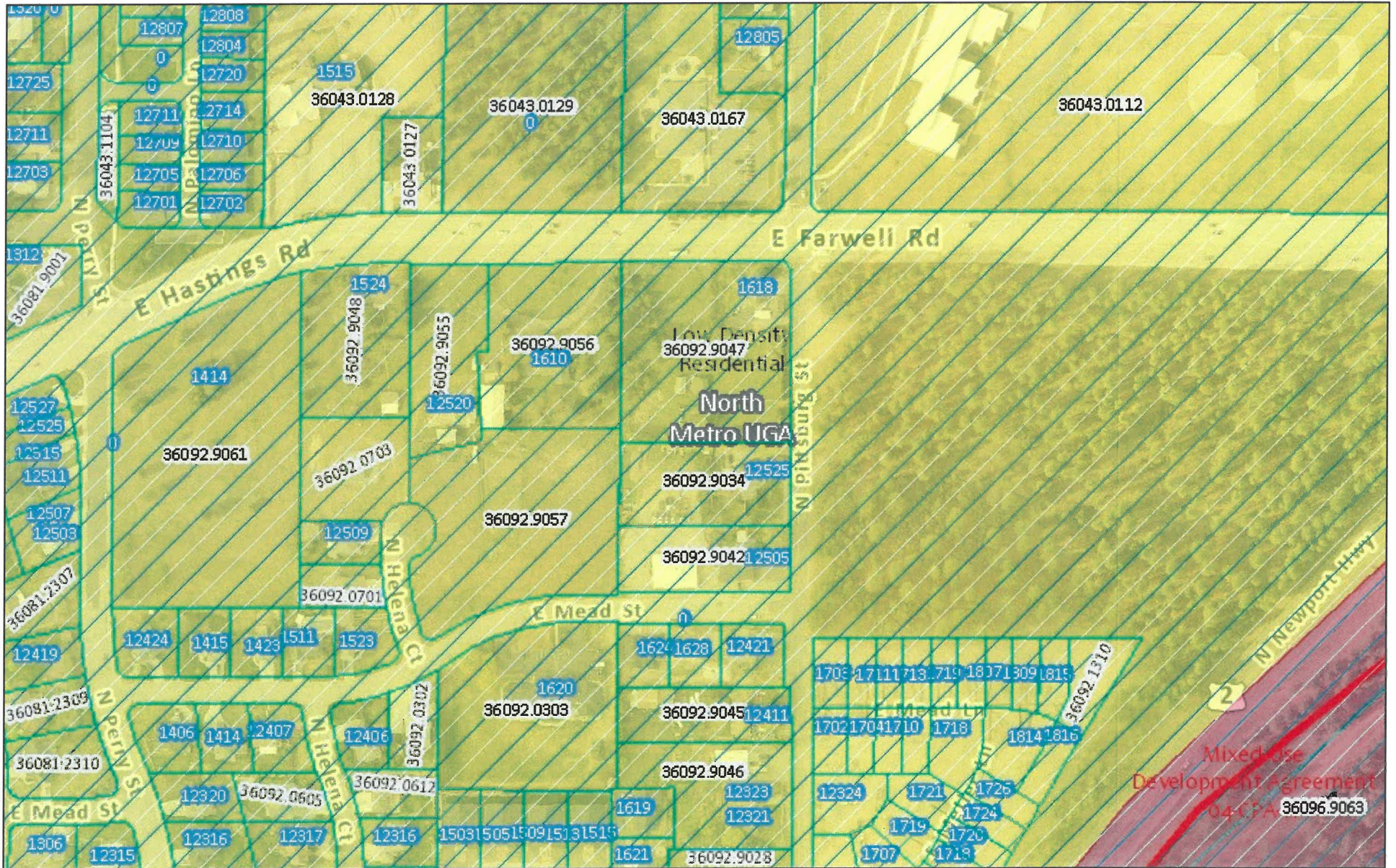


# MAVIS



11/17/2021, 12:54:58 PM

## Parcels

Active-Complete

■ Mobile Home Points

## Condos and other Vertical Units

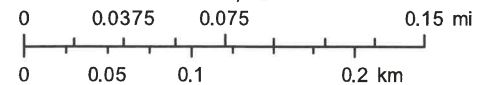
□ Ground Floor or Leased Land

□ Other Floors

□ Spokane County Boundary

□ Cities

1:4,514



Spokane County IT

Building and Planning

This map is a composite of "best available data layers. This map is for reference only. No warranties are expressed or implied.