

HI to RC on approx. 45.49 acres

16-26-43

21-26-43

36215.9026

Kaiser South Plant Rd

16-26-43

15-26-43

15-26-43

22-26-43

21-26-43

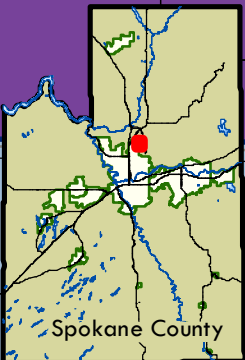
22-26-43

Market St

Magnesium Rd

MZ

Freya St



Proposed Comp Plan Amendment			
Residential	NC	Industrial	UR
LDR-P	CC	LI	RAC
LDR	RC	HI	Resource Lands
MDR	Mixed Use	Rural	LTA
HDR	MU	RT	STA
Commercial		R-5	FZ
LDAC		RCV	MZ

2022 Comp Plan Amendment Requests
22-CPAIR-07

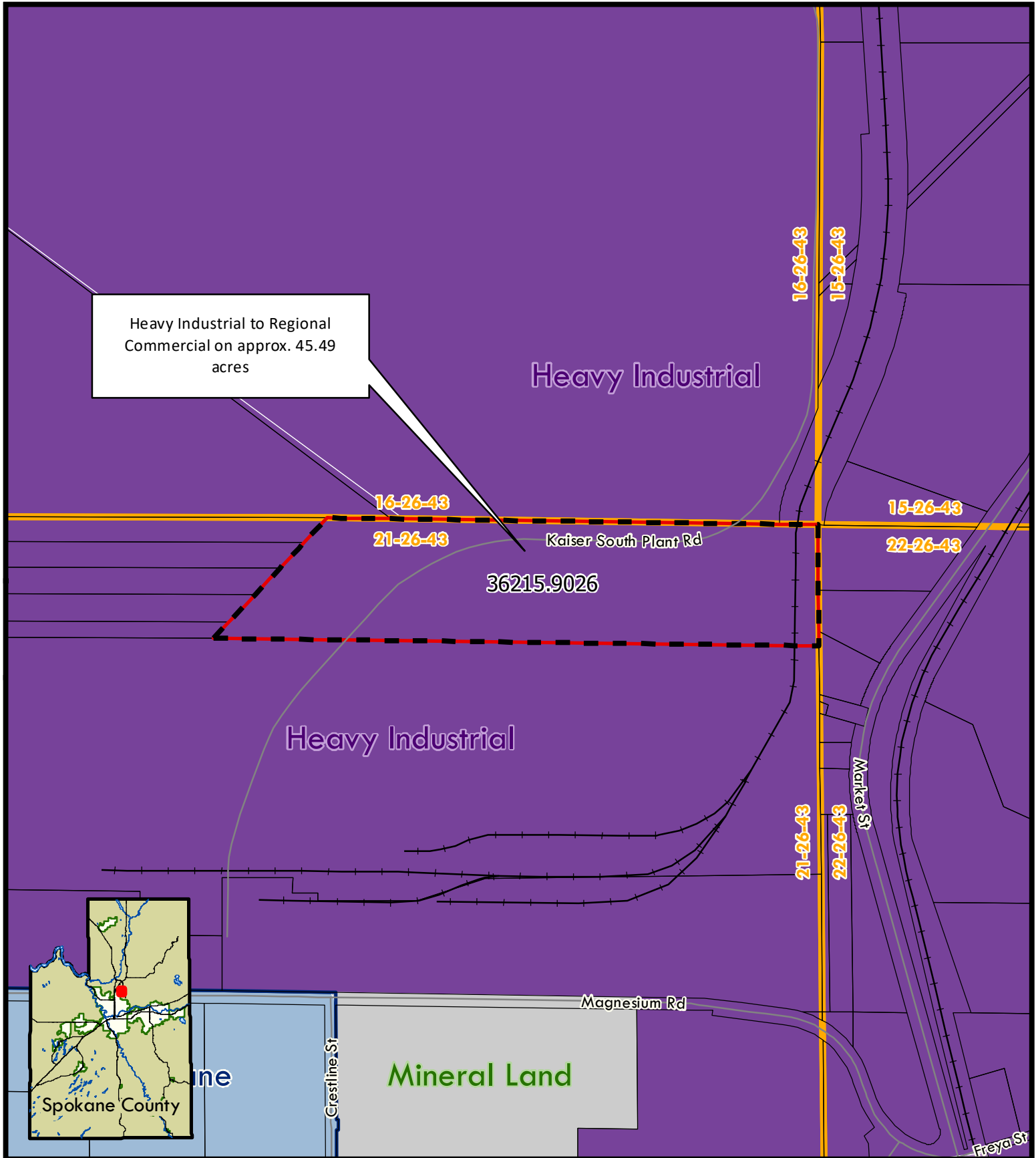
Zoning Map

0 350 700 1,050 1,400 Feet

1 inch = 700 feet
State Plane WA North

This map was published by the Spokane County Department of Building and Planning as a general planning tool. Due to the differing quality of source documents, the Department cannot accept responsibility for errors or omissions, and therefore, there are no warranties which accompany this material.

Map produced: February 2022
Spokane County GIS

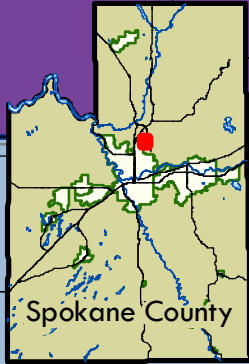


Heavy Industrial to Regional Commercial on approx. 45.49 acres

Heavy Industrial

Heavy Industrial

Mineral Land



	Proposed Comp Plan Amendment
	UGA
	Resource Lands
	LTA
	STA
	FZ
	MZ
	Rural
	RT
	R-5
	RC
	LTA
	STA
	FZ
	MZ
	Rural
	RT
	LDR
	MDR
	HDR
	LDAR
	LDAC
	LDR+
	Mixed Use
	MU
	CAC
	UAC
	Commercial
	NC
	CC
	RC
	Industrial
	LI
	HI

2022 Comp Plan Amendment Requests
22-CPAIR-07

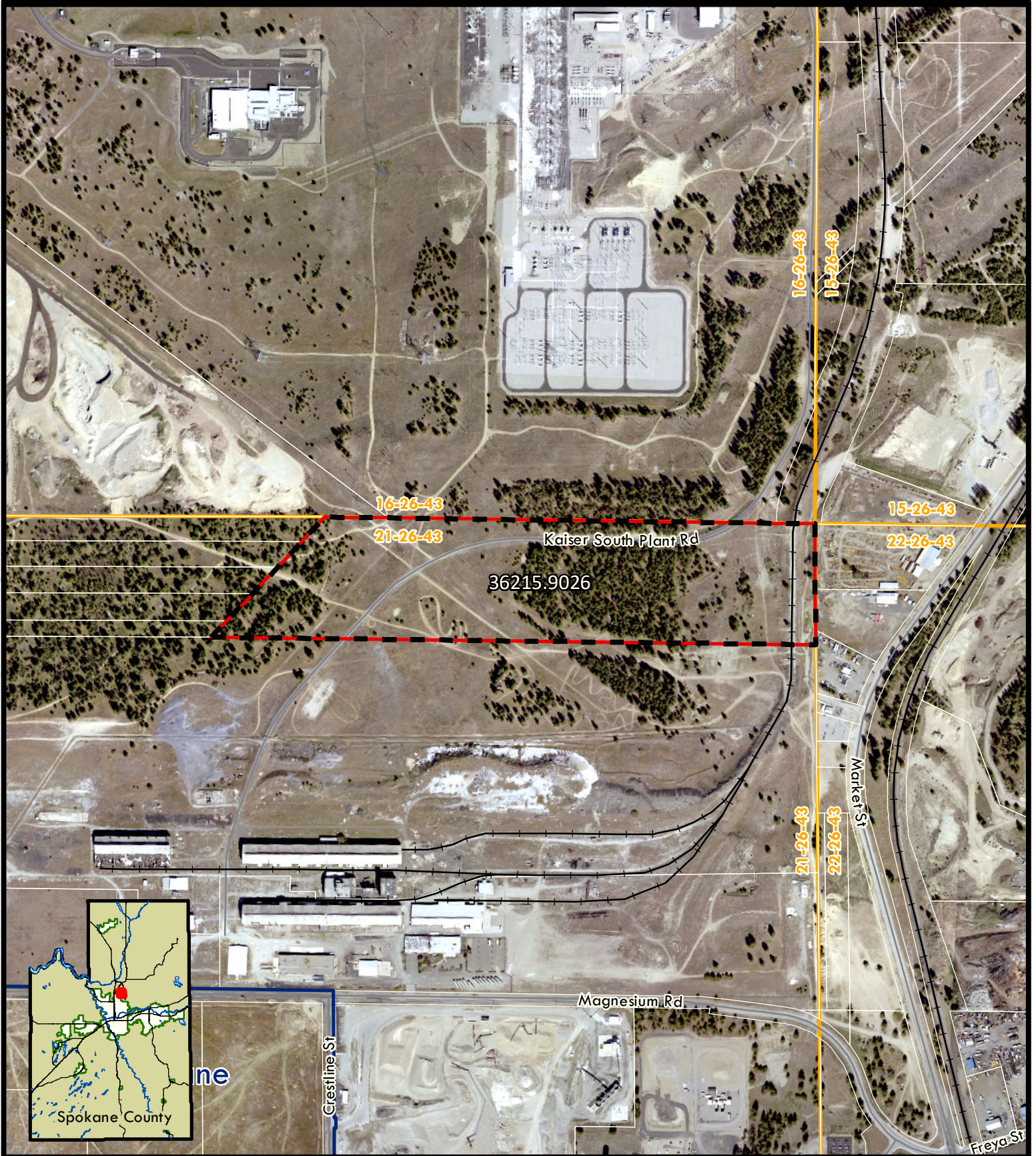
Comprehensive Plan Map

0 170 340 680 1,020 1,360 Feet


1 inch = 700 feet
 State Plane WA North

This map was published by the Spokane County Department of Building and Planning as a general planning tool. Due to the differing quality of source documents, the Department cannot accept responsibility for errors or omissions, and therefore, there are no warranties which accompany this material.

Map produced: February 2022
 Spokane County GIS



Legend

 Proposed Comp Plan Amendment

**2022 Comp Plan Amendment Requests
22-CPAIR-07**

Aerial Map

2020 Imagery



1 inch = 700 feet
State Plane WA North

This map was published by the Spokane County Department of Building and Planning as a general planning tool. Due to the differing quality of source documents, the Department cannot accept responsibility for errors or omissions, and therefore, there are no warranties which accompany this material.

Map produced: February 2022
Spokane County GIS