

SEC. 34, T. 25N., R. 44E., W. 1M.



**SITE NOTES**

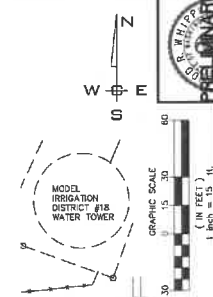
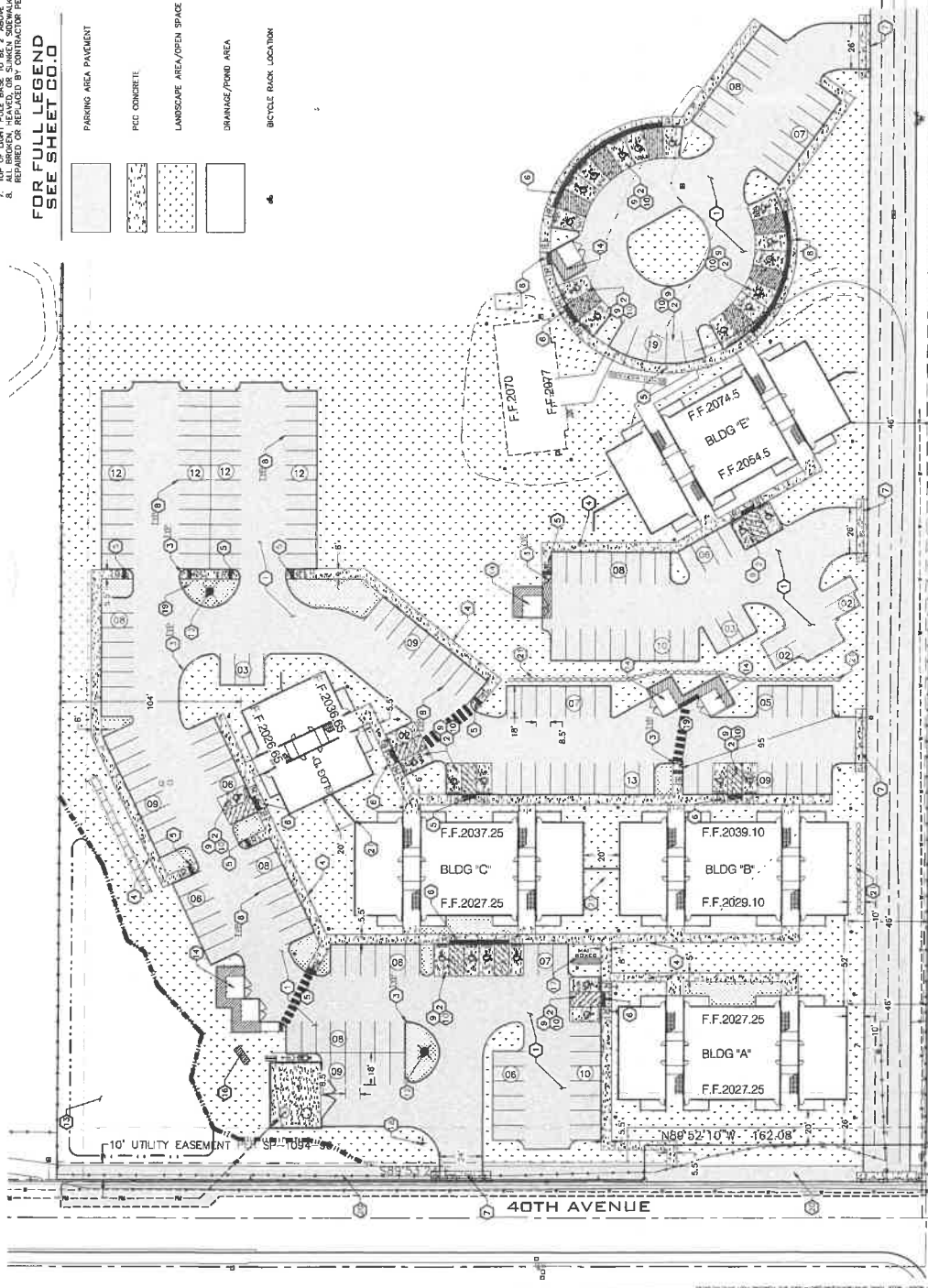
1. SEE PLAN FOR SUSTAINABILITY INFORMATION.
2. SEE GRADING AND DRAINAGE PLANS FOR GRADING AND DRAINAGE INFORMATION.
3. SEE LANDSCAPE PLANS FOR LANDSCAPING PLANS AND INFORMATION.
4. ALL CONSTRUCTION SHALL BE IN ACCORDANCE WITH THE CITY OF SPOKANE, WASHINGTON, SUSTAINABILITY DESIGN STANDARDS.
5. GUEST PARKING ALLOWED IN ALL UNRESERVED, UNMARKED SPACES.
6. CONTRACTOR SHALL BE RESPONSIBLE FOR REMOVAL OF ANY REMAINING CURBS, FOUNDATIONS, ETC.
7. TOP OF LIGHT POLE BASE TO BE 7' ABOVE TOP OF PROPOSED CURB TO THE PROJECT SHALL BE REPAIRED OR REPLACED BY CONTRACTOR PER CITY OF SPOKANE, SENEWALK POLICY.

**FOR FULL LEGEND SEE SHEET 00.0**

	PARKING AREA PAVEMENT
	PERC CONCRETE
	LANDSCAPE AREA/OPEN SPACE
	DRAINAGE/POND AREA
	BICYCLE RACK LOCATION

**CONSTRUCTION NOTES**

1. PROVIDE AND INSTALL ASPHALT PAVEMENT SECTION PER DETAIL 1, SHEET C3.0.
2. PROVIDE AND INSTALL CONCRETE PAVEMENT SECTION PER DETAIL 1, SHEET C3.1.
3. PROVIDE AND INSTALL TYPE 'A' CONCRETE CURB PER SPOKANE COUNTY STANDARD PLAN A-3.
4. PROVIDE AND INSTALL CONCRETE SIDEWALK PER SPOKANE COUNTY STANDARD PLAN A-4, WIDTH PER PLAN.
5. PROVIDE AND INSTALL CURB RAMP SINGLE DIRECTION PER SPOKANE COUNTY STANDARD PLAN A-50.
6. PROVIDE AND INSTALL ON-SITE CURB RAMP PER DETAIL 9, SHEET C3.1.
7. PROVIDE & INSTALL DRIVEWAY CEMENT CONCRETE APPROACHES PER SPOKANE COUNTY STANDARD PLAN A-7. SEE SHEET C3.0 FOR DETAILS.
8. PANELS OF PARKING STALLS TO BE SPACED TO ACCOMMODATE 2 PASSENGER VEHICLES.
9. PAINT ACCESSIBLE HANDICAP PARKING STALL WITH INTERNATIONAL SYMBOL OF ACCESS AND HC SIGN AT HEAD OF STALL PER IRC STANDARDS. PROVIDE 5' CLEARANCE TO STALL.
10. PAINT ACCESSIBLE HANDICAP PARKING STALL PER CITY OF SPOKANE STANDARD DETAILS 0-54, AND 0-50A.
11. PROVIDE 6' CLEARANCE TO ALL HANDICAP SPACES. SEE GRADING PLANS FOR ELEVATION COORDINATE WITH ARCHITECT.
12. DOUBLE PAINTED PER WOOD PRESERVATION, 8-23 PAVEMENT MARKING STRIPES SHALL BE SINGLE WHITE SOLID LINE 6 FEET WIDE BY 2 FEET DEEP 8 x 4 FEET O.C. SEE DETAIL 5, SHEET C3.1.
13. PROPOSED LIGHT POLE BASE AND FIXTURE LOCATION. SEE ARCHITECTURAL AND ELECTRICAL PLANS FOR MORE INFORMATION.
14. PROVIDE AND INSTALL 4" DIA. 60" HIGH SIGN. SEE STUDY DRAINAGE AND POND PLANS, SHEETS C3.0 AND C3.1.
15. PROVIDE AND INSTALL DUMPSTER ENCLOSURE WITH 6" HIGH CHAINLINK FENCE AND PRIVACY SLATS. SEE DETAILS ON SHEET C3.3. REFER TO ARCHITECTURAL PLANS.
16. BIKE RACK SIZE TO HOLD MIN. (5) BICYCLES. CONCRETE PAD TO BE APPROXIMATELY 6'X10'. SHOWN ON PLANS. REFER TO ARCHITECTURAL PLANS.
17. APPROXIMATE LOCATION OF ENTRY MONUMENT SIGN BY OTHERS. REFER TO ARCHITECTURAL PLANS.
18. MAIL KIOSK LOCATION. SEE ARCHITECTURAL PLANS FOR INFORMATION.
19. PROVIDE & INSTALL RH-1 30' X 30' STOP SIGN PER SPOKANE COUNTY STANDARDS.
20. PROVIDE AND INSTALL LANDSCAPE ISLAND WITH 6" CURB AND 1 FOOT OFFSET FOR SPILL OF CALOT CURB TYPE SEE SHEET C3.0.
21. PROVIDE & INSTALL 9' PEDESTRIAN PATH PER SPOKANE COUNTY STANDARD PLAN A-9.
22. PROVIDE & INSTALL RETAINING WALL PER SHEET X.X.



**SHEET C3.0**  
JOB NUMBER 21-2807

**BELLE TERRE SITE PLAN**  
13801 E. BELLE TERRE AVE.  
SPOKANE COUNTY, WA

**PLANS NOT APPROVED BY AGENCY**

**WVCE**  
WYOMING VALLEY CONSTRUCTION ENGINEERS  
SPOKANE, WASHINGTON  
PHONE: 509.425.1234 FAX: 509.425.1235

PROJ. #:	21-2807
DATE:	04/18/23
DRAWN:	AEQ
REVIEWED:	TRW

SCALE:	HORIZONTAL: 1" = 30'
	VERTICAL: N/A

DATE:	BY:

NAVD - 88  
COORDINATION: GP 33027 257  
THE MARKS IN WOODSTOCK BRASS DISK CENTERED INTO A DIRT  
MARKER IN THE CONCRETE SURFACE  
ELEVATION: 3288.195 MSL

**SITE PLAN**  
SCALE: 1" = 30'