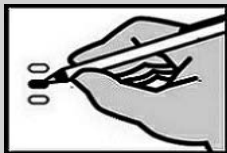
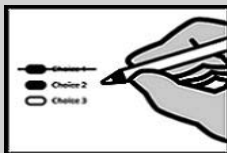


Sample Ballot
Spokane County Washington
November 8, 2022 General Election



Completely fill in the oval to the left of your choice. Vote for only one candidate in each contest. Use a dark blue or black pen.

Unless specifically allowed by law, more than one vote for a contest will be an overvote and no votes for that ballot contest will be counted. To vote for a candidate whose name is not printed on the ballot, write the name on the line provided and fill in the oval.



If you make a correction or mismatch your ballot, draw a line through the entire response. You then have the option of making another choice.

In order for your ballot to be counted, it must either be postmarked no later than Election Day or deposited at a ballot drop box no later than 8:00 p.m. on Election Day, November 8, 2022.

For a list of the people and organizations that donated to state and local candidates and ballot measure campaigns, visit www.pdc.wa.gov.

Advisory Votes

Advisory Vote No. 39
Engrossed Substitute Senate Bill 5974

The legislature increased, without a vote of the people, the tax on aircraft fuel from 11 cents to 18 cents per gallon, costing \$14 million in its first ten years, for government spending.

This tax increase should be:

- Repealed
- Maintained

Advisory Vote No. 40
Engrossed Substitute House Bill 2076

The legislature imposed, without a vote of the people, premiums on "transportation network companies" to provide workers compensation to their drivers, costing an indeterminate amount in its first ten years, for government spending.

This tax increase should be:

- Repealed
- Maintained

READ: Each candidate for partisan office may state a political party that he or she prefers. A candidate's preference does not imply that the candidate is nominated or endorsed by the party, or that the party approves of or associates with that candidate.

Federal - Partisan Office

United States Senator

- Patty Murray
(Prefers Democratic Party)
- Tiffany Smiley
(Prefers Republican Party)
- _____

United States Representative
Congressional District 5

- Cathy McMorris Rodgers
(Prefers Republican Party)
- Natasha Hill
(Prefers Democratic Party)
- _____

State of Washington -
Partisan Office

Secretary of State
 Unexpired 2-year term

- Steve Hobbs
(Prefers Democratic Party)
- Julie Anderson
(Prefers Nonpartisan Party)
- _____

Legislative District 3 -
Partisan Office

ONLY REGISTERED VOTERS IN
LEGISLATIVE DISTRICT 3
 ARE ELIGIBLE TO VOTE ON THE
 FOLLOWING

State Representative Pos. 1

- Marcus Riccelli
(Prefers Democratic Party)
- Scotty Nicol
(Prefers Republican Party)
- _____

State Representative Pos. 2

- Timm Ormsby
(Prefers Democratic Party)
- Natalie Poulson
(Prefers Republican Party)
- _____

Legislative District 4 -
Partisan Office

ONLY REGISTERED VOTERS IN
LEGISLATIVE DISTRICT 4
 ARE ELIGIBLE TO VOTE ON THE
 FOLLOWING

State Representative Pos. 1

- Ted Cummings
(Prefers Democratic Party)
- Suzanne Schmidt
(Prefers Republican Party)
- _____

State Representative Pos. 2

- Rob Chase
(Prefers Republican Party)
- Leonard Christian
(Prefers Republican Party)
- _____

Legislative District 6 -
Partisan Office

ONLY REGISTERED VOTERS IN
LEGISLATIVE DISTRICT 6
 ARE ELIGIBLE TO VOTE ON THE
 FOLLOWING

State Senator

- Jeff Holy
(Prefers Republican Party)
- _____

State Representative Pos. 1

- Mike Volz
(Prefers Republican Party)
- _____

State Representative Pos. 2

- Jenny Graham
(Prefers Republican Party)
- Michaela Kelso
(Prefers Democratic Party)
- _____

Legislative District 7 -
Partisan Office

ONLY REGISTERED VOTERS IN
LEGISLATIVE DISTRICT 7
 ARE ELIGIBLE TO VOTE ON THE
 FOLLOWING

State Senator

- Shelly Short
(Prefers Republican Party)
- _____

State Representative Pos. 1

- Jacquelin Maycumber
(Prefers Republican Party)
- Lonny Ray Williams
(Prefers Republican Party)
- _____

State Representative Pos. 2

- Joel Kretz
(Prefers Republican Party)
- _____

Legislative District 9 - Partisan Office

ONLY REGISTERED VOTERS IN LEGISLATIVE DISTRICT 9 ARE ELIGIBLE TO VOTE ON THE FOLLOWING

State Representative Pos. 1
 Mary Dye
(Prefers Republican Party)

State Representative Pos. 2
 Joe Schmick
(Prefers GOP Party)

Spokane County - Partisan Office

ONLY REGISTERED VOTERS IN COUNTY COMMISSIONER DISTRICT NO. 1 ARE ELIGIBLE TO VOTE ON THE FOLLOWING

Commissioner District 1
 Chris Jordan
(Prefers Democratic Party)
 Kim Plese
(Prefers Republican Party)

ONLY REGISTERED VOTERS IN COUNTY COMMISSIONER DISTRICT NO. 2 ARE ELIGIBLE TO VOTE ON THE FOLLOWING

Commissioner District 2
 Amber Waldref
(Prefers Democratic Party)
 Michael Cathcart
(Prefers Republican Party)

ONLY REGISTERED VOTERS IN COUNTY COMMISSIONER DISTRICT NO. 3 ARE ELIGIBLE TO VOTE ON THE FOLLOWING

Commissioner District 3
 Josh Kerns
(Prefers Republican Party)
 Wild Bill Schreiner
(States No Party Preference)

ONLY REGISTERED VOTERS IN COUNTY COMMISSIONER DISTRICT NO. 4 ARE ELIGIBLE TO VOTE ON THE FOLLOWING

Commissioner District 4
 Mary Kuney
(Prefers Republican Party)
 Paul Brian Noble
(Prefers Republican Party)

INTENTIONALLY LEFT BLANK

Spokane County - Partisan Office

ONLY REGISTERED VOTERS IN COUNTY COMMISSIONER DISTRICT NO. 5 ARE ELIGIBLE TO VOTE ON THE FOLLOWING

Commissioner District 5
 Maggie Yates
(Prefers Democratic Party)
 Al French
(Prefers Republican Party)

Spokane County - Partisan Office

Assessor
 Tom Konis
(Prefers Republican Party)

Auditor
 Vicky M Dalton
(Prefers Democratic Party)
 Bob McCaslin
(Prefers Republican Party)

Clerk
 Tim Fitzgerald
(Prefers Republican Party)

Prosecuting Attorney
 Larry Haskell
(Prefers Republican Party)
 Deb Conklin
(Prefers Non-Partisan Party)

Sheriff
 John Nowels
(Prefers Republican Party)
 Wade Nelson
(Prefers Republican Party)

Treasurer
 Michael Baumgartner
(Prefers Republican Party)

Judicial - Nonpartisan Office

Supreme Court Justice Position 1
 Mary I. Yu

Supreme Court Justice Position 5
 Barbara Madsen

Supreme Court Justice Position 6
 G. Helen Whitener

Spokane County - Nonpartisan Office

District Court Judge 1
 Patrick T Johnson

District Court Judge 2
 Jeffrey R. Smith

District Court Judge 3
 Jenny Zappone
 Eric Dooyema

District Court Judge 4
 Patti Connolly Walker

District Court Judge 5
 Jennifer L. Fassbender

District Court Judge 6
 Deanna Crull
 Andrew Biviano

District Court Judge 7
 Aimee Maurer

District Court Judge 8
 Richard M. Leland

Public Utility District - Nonpartisan Office

ONLY REGISTERED VOTERS IN PUBLIC UTILITY DISTRICT 1 ARE ELIGIBLE TO VOTE ON THE FOLLOWING

PUD Commissioner District 1
 Wade A Carpenter
 Britney Inglis

INTENTIONALLY LEFT BLANK

Airway Heights Transportation Benefit District

ONLY REGISTERED VOTERS IN **CITY OF AIRWAY HEIGHTS** ARE ELIGIBLE TO VOTE ON THE FOLLOWING

Proposition No. 1
Transportation Benefit District of Airway Heights, Washington
Sales and Use Tax Levy for Transportation Improvement Plan

The Transportation Benefit District of Airway Heights, Washington has adopted Resolution No. 2022-001, concerning a sales and use tax for transportation improvements, maintenance, repair and infrastructure. This proposition would increase the sales and use tax to 0.30%, from 0.20% (a one cent increase per \$10 sale), to be collected within the District for a term of ten years, beginning not earlier than January 1, 2024, and ending not later than December 31, 2033.

Should this proposition be:

- Approved
- Rejected

Town of Rockford

ONLY REGISTERED VOTERS IN **TOWN OF ROCKFORD** ARE ELIGIBLE TO VOTE ON THE FOLLOWING

Proposition No. 1
Town of Rockford
Property Tax Levy for Fire Protection

The Rockford Town Council accepted Resolution 22-06 concerning a proposition to finance 2023 fire protection services. This proposition would authorize the Town to levy an excess property tax in 2023 on all taxable property within the Town of Rockford at an approximate rate of \$.51 per \$1,000 of assessed value to raise \$28,500 to be used to provide adequate services in 2023. This levy replaces an expiring levy, which the Town has collected in past years. Should this proposition be:

- Approved
- Rejected

Proposition No. 2
Town of Rockford
Property Tax Levy for Emergency Medical Services

The Rockford Town Council accepted Resolution 22-07 concerning a proposition to finance 2023 Emergency Medical Services through the Rockford Fire Department. This proposition would authorize the Town to levy an excess property tax in 2023 on all taxable property within the Town of Rockford at an approximate rate of \$.50 per \$1,000 of assessed valuation for six consecutive years to be used to provide adequate services during 2023-2028. This levy replaces an expiring levy, which the Town has collected in past years. Should this proposition be:

- Approved
- Rejected

Town of Spangle

ONLY REGISTERED VOTERS IN **TOWN OF SPANGLE** ARE ELIGIBLE TO VOTE ON THE FOLLOWING

Proposition No. 1
Town of Spangle
Fire Protection Service Excess Levy

The Spangle Town Council enacted ordinance No. 450 concerning a proposition to finance the 2023 fire protection services. This proposition would authorize the Town to levy an excess property tax in 2023 on all taxable property within the Town of Spangle in an approximate rate of \$1.50 per \$1,000 of assessed value to raise \$23,000 to be used to provide adequate fire protection services in 2023. Should this proposition be approved?

- Yes
- No

Proposition No. 2
Town of Spangle
Police Protection Service Excess Levy

The Spangle Town Council enacted Ordinance No. 451 concerning a proposition to finance the 2023 Police Protection Services. This proposition would authorize the Town to levy an excess property tax in 2023 on all taxable property within the Town of Spangle in an approximate rate of \$1.19 per \$1,000 of assessed value to raise \$17,000.00 to be used to provide adequate police protection services in 2023. Should this proposition be approved?

- Yes
- No

City of Spokane

ONLY REGISTERED VOTERS IN **CITY OF SPOKANE** ARE ELIGIBLE TO VOTE ON THE FOLLOWING

Proposition No. 1
City of Spokane
Amendment to the City Charter Regarding the City Attorney

This proposition will amend sections 24, 28, 29, and 33 and repeal section 32 of the Spokane City Charter to amend the requirements and process for the appointment, duties, and powers of the City Attorney and other legal counsel, as set forth in Ordinance C-36244.

Shall this measure be enacted into law?

- Yes
- No

East Valley School District

ONLY REGISTERED VOTERS IN **EAST VALLEY SCHOOL DISTRICT** ARE ELIGIBLE TO VOTE ON THE FOLLOWING

Proposition No. 1
East Valley School District No. 361
Replacement Capital Levy for Safety, Security and Infrastructure Improvements

The Board of Directors of East Valley School District No. 361 adopted Resolution No. 2806, concerning a proposition for a replacement levy for capital improvements. This proposition would authorize the District to levy the following excess taxes, in place of an expiring levy, upon all taxable property within the District, for District-wide safety, security and infrastructure improvements (including making safety, security, communication, parking and traffic improvements; and replacing plumbing, HVAC, roofs and electrical systems):

Collection Year	Estimated Levy Rate/\$1,000 Assessed Value	Levy Amount
2023	\$0.75	\$4,255,000
2024	\$0.75	\$4,553,000
2025	\$0.75	\$4,735,000
2026	\$0.75	\$4,924,000

all as provided in Resolution No. 2806. Should this proposition be approved?

- Levy Yes
- Levy No

INTENTIONALLY LEFT BLANK

Reardan-Edwall School District

ONLY REGISTERED VOTERS IN
**REARDAN EDWALL SCHOOL DISTRICT
009** ARE ELIGIBLE TO VOTE ON THE
FOLLOWING

Proposition No. 1
Reardan-Edwall School District No. 9
Capital Levy for Health, Safety and
Infrastructure Improvements

The Board of Directors of Reardan-Edwall School District No. 9 adopted Resolution No. 16-2021/22, concerning a proposition for a levy for capital improvements. This proposition would authorize the District to levy the following excess taxes, on all taxable property within the District, to make District-wide health, safety and infrastructure improvements (replacing football/soccer lighting; constructing transportation facility; renovating track, tennis courts; converting existing building into wrestling room; constructing fieldhouse):

Collection Year	Estimated Levy Rate/\$1,000 Assessed Value	Levy Amount
2023	\$0.95	\$766,321
2024	\$0.95	\$800,805
2025	\$0.95	\$836,842
2026	\$0.95	\$874,500
2027	\$0.95	\$913,852

all as provided in Resolution No. 16-2021/22. Should this proposition be approved?

- Levy Yes
 Levy No

Rosalia Park and Recreation District

ONLY REGISTERED VOTERS IN
ROSALIA PARK DISTRICT - 5
ARE ELIGIBLE TO VOTE ON THE
FOLLOWING

Proposition No. 1
Rosalia Park and Recreation District
Special Tax Levy

Shall the Rosalia Park & Recreation District No. 5 be authorized to impose a special (excess) tax levy of \$85,000.00, an estimated \$.48 cents per thousand dollars of assessed valuation, to be collected in the year 2023, in order to help defray the costs of operation and maintenance? This is a zero percent increase of the prior levy.

Should this Proposition be approved?

- Yes
 No

INTENTIONALLY LEFT BLANK

INTENTIONALLY LEFT BLANK

Spokane County Sample Ballot

Page 4 of 4

November 8, 2022 General Election Information

If a primary election was held for an office, the two candidates who received the most votes in the Primary advanced to the General Election.

Each candidate for partisan office may state a political party that he or she prefers. A candidate's preference does not imply that the candidate is nominated or endorsed by the party, or that the party approves of or associates with that candidate.

Voter Registration

If you need a replacement ballot or have changed your residence address, you may update your registration and receive a replacement or updated ballot by visiting VoteWA.gov or contacting our office until Monday, October 31, 2022.

Beginning on Tuesday, November 1, 2022, you may update your registration in person and receive a replacement or updated ballot at a Voter Service Center.

Spokane County Elections Contact Information

Online: www.spokanecounty.org/elections
Email: elections@spokanecounty.org
Phone: 509-477-2320

Ballot Drop Box Locations

Ballot drop boxes are available starting October 20, 2022 and close promptly at 8:00 p.m. on Election Day - November 8, 2022:

- Airway Heights Library - 1213 S Lundstrom St
- Argonne Library - 4322 N Argonne Rd
- CenterPlace - 2426 N Discovery Pl
- Central Library - 906 W Main Ave
- Cheney Library - 610 First St
- Deer Park Library - 208 S Forest Ave
- Elections Office - 1033 W Gardner Ave
- Fairfield Library - 305 E Main St
- Hillyard Library - 4110 N Cook St
- Latah Town Hall - 108 Market St
- Liberty Lake Library - 23123 E Mission Ave
- Liberty Park Library - 402 S Pittsburg St
- Medical Lake Library - 321 E Herb St
- Millwood City Hall - 9103 E Frederick Ave
- Moran Prairie Library - 6004 S Regal St
- North Spokane Library - 44 E Hawthorne Rd
- Otis Orchards Library - 22324 E Wellesley Ave
- Rockford Town Hall - 20 W Emma St
- Shadle Park Library - 2111 W Wellesley Ave
- Spangle Town Hall - 115 W 2nd St
- Spokane County Courthouse - 1116 W Broadway Ave
- Spokane Valley Library - 12004 E Main Ave
- STA Plaza - 701 W Riverside Ave
- The Hive - 2904 E Sprague Ave
- Waverly Town Hall - 225 N Commercial St

Locations may also be found at www.spokanecounty.org/elections or VoteWA.gov.

Voter Service Centers

Register to vote, drop off ballots, get replacement ballots, use an Accessible Voting Unit, or receive other assistance as needed at:

Downtown Spokane

- Elections Office - 1033 W Gardner Ave
Monday - Friday: 8:30 a.m. to 4:00 p.m.
November 5th, Saturday: 8:30 a.m. to 4:00 p.m.
Election Day November 8th: 7:00 a.m. to 8:00 p.m.

Spokane Valley

- CenterPlace - 2426 N Discovery Pl
November 7th, Monday: 8:30 a.m. to 4:00 p.m.
Election Day November 8th: 7:00 a.m. to 8:00 p.m.

In order for your ballot to be counted, it must be either postmarked no later than election day or deposited at a ballot drop box no later than 8:00 p.m. on Election Day. If depositing your ballot in a US Postal Service box, Postage is Prepaid - no postage is required.

End Of Ballot