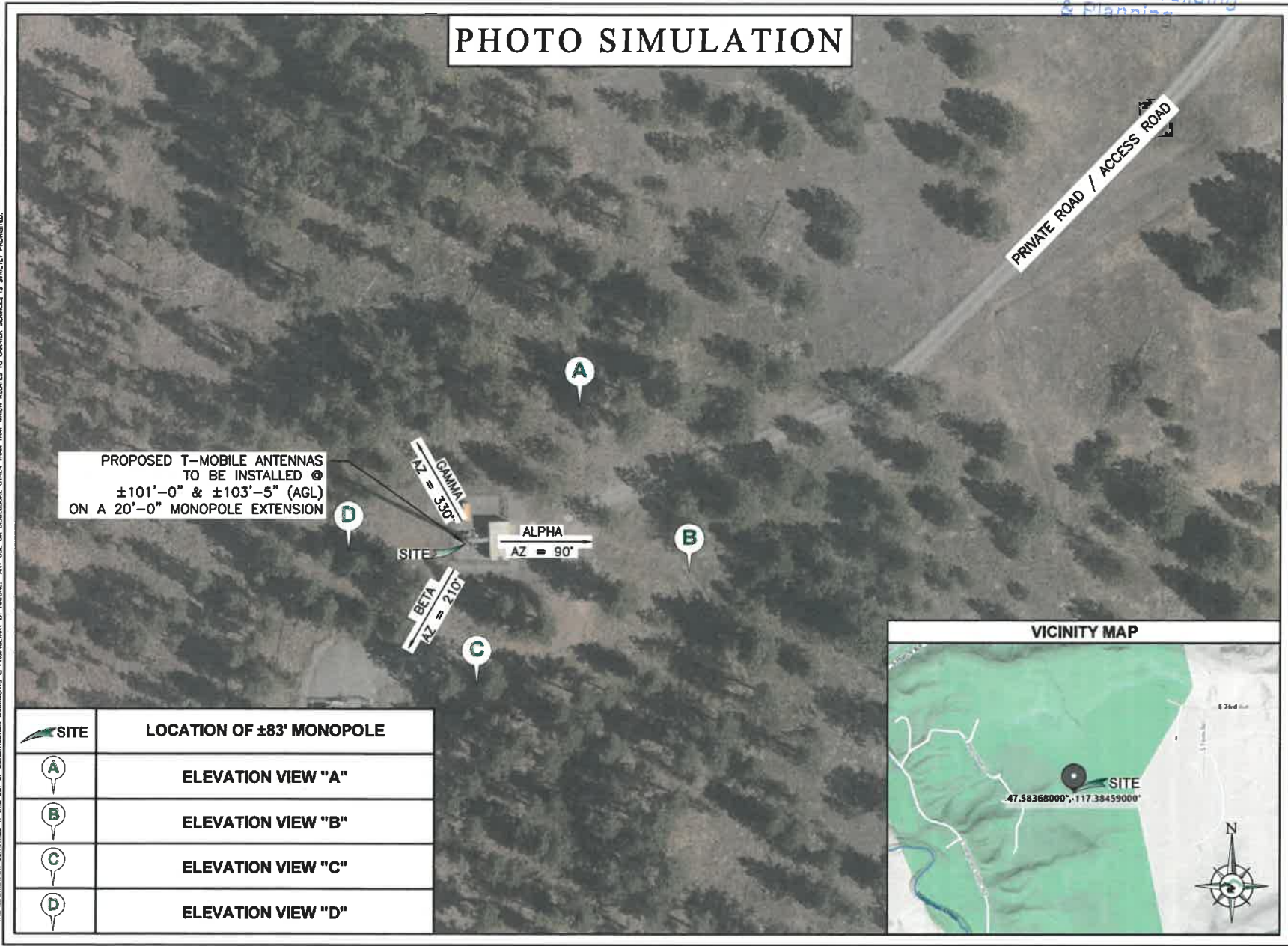


Spokane County

DEC 13 2022

Department of Building & Planning

PHOTO SIMULATION



PROPOSED T-MOBILE ANTENNAS TO BE INSTALLED @ ±101'-0" & ±103'-5" (AGL) ON A 20'-0" MONOPOLE EXTENSION

SITE	LOCATION OF ±83' MONOPOLE
A	ELEVATION VIEW "A"
B	ELEVATION VIEW "B"
C	ELEVATION VIEW "C"
D	ELEVATION VIEW "D"

PREPARED FOR:

**T-Mobile**

T-MOBILE USA, INC.  
601 W 1ST AVE, SUITE 1400 (RM# 1441)  
SPOKANE, WA 99201

PREPARED BY:

**POWDER RIVER**  
Development Services, LLC  
408 S EAGLE RD, SUITE 200  
EAGLE, ID 83615

REV	DATE	DESCRIPTION	INT
A	11/21/22	ISSUED FOR REVIEW BOX	BMW

REVIEWED BY: BMW

**FOR REFERENCE ONLY**

DISCLAIMER:  
THIS PHOTO SIMULATION IS AN ARTIST'S REPRESENTATION OF A FUTURE INSTALLATION. THE ACTUAL CONSTRUCTION MAY VARY SLIGHTLY IN SIZE, LOCATION, COLOR, AND TEXTURE FROM THE SIMULATION.

SITE INFORMATION  
T-MOBILE SITE NAME:  
HATCH-HANGMAN ATC  
T-MOBILE SITE#: SP01804A  
SITE TYPE: ±83' MONOPOLE  
W/ PROPOSED 20' EXTENSION  
2200 E 73RD AVE  
SPOKANE, WA  
SPOKANE COUNTY  
47.58368000, -117.38459000

SHEET TITLE:  
**TITLE SHEET**

SHEET NUMBER:  
**PS-1**

THE INFORMATION CONTAINED IN THIS SET OF CONSTRUCTION DOCUMENTS IS PROPRIETARY BY NATURE. ANY USE OR DISCLOSURE OTHER THAN THAT WHICH RELATES TO CARRIER SERVICES IS STRICTLY PROHIBITED.

Spokane County  
 DEC 13 2022  
 Department of Building  
 & Planning



PROPOSED T-MOBILE  
 INSTALLATIONS @  
 ±101'-0" &  
 ±103'-5"-0" (AGL)

PROPOSED 20'  
 MONOPOLE  
 EXTENSION

EXISTING ±83'  
 MONOPOLE

THE INFORMATION CONTAINED IN THIS SET OF CONSTRUCTION DOCUMENTS IS PROPRIETARY BY NATURE. ANY USE OR DISCLOSURE OTHER THAN THAT WHICH RELATES TO CURRENT SERVICES IS STRICTLY PROHIBITED.

AFTER INSTALLMENT SCALE: N.T.S. 2

BEFORE INSTALLMENT SCALE: N.T.S. 1

PREPARED FOR:  
**T-Mobile®**  
 T-MOBILE USA, INC.  
 601 W 1ST AVE, SUITE 1400 (RM# 1441)  
 SPOKANE, WA 99201

PREPARED BY:  
  
**POWDER RIVER**  
 Development Services, LLC  
 408 S EAGLE RD, SUITE 200  
 EAGLE, ID 83616

REVISIONS

REV	DATE	DESCRIPTION	INT
A	11/21/22	ISSUED FOR REVIEW DOCS	BMW
REVIEWED BY:			BMW

**FOR  
 REFERENCE  
 ONLY**

**DISCLAIMER:**  
 THIS PHOTO SIMULATION IS AN ARTIST'S CONCEPTION OF A FUTURE INSTALLATION. THE ACTUAL CONSTRUCTION MAY VARY SLIGHTLY IN SIZE, LOCATION, COLOR, AND TEXTURE FROM THIS ILLUSTRATION.

**SITE INFORMATION**  
 T-MOBILE SITE NAME:  
 HATCH-HANGMAN ATC  
 T-MOBILE SITE#: SP01804A  
 SITE TYPE: ±83' MONOPOLE  
 W/ PROPOSED 20' EXTENSION  
 2200 E 73RD AVE  
 SPOKANE, WA  
 SPOKANE COUNTY  
 47.68368000°, -117.38469000°

SHEET TITLE:  
**ELEVATION VIEW "A"**

SHEET NUMBER:  
**PS-2**

THE INFORMATION CONTAINED IN THIS SET OF CONSTRUCTION DOCUMENTS IS PROPRIETARY BY NATURE. ANY USE OR DISCLOSURE OTHER THAN THAT WHICH RELATES TO CARRIER SERVICES IS STRICTLY PROHIBITED.

Spokane County  
DEC 13 2022  
Department of Building  
& Planning



AFTER INSTALLMENT

SCALE: N.T.S. 2

BEFORE INSTALLMENT

SCALE: N.T.S. 1

PREPARED FOR:

**T-Mobile**

T-MOBILE USA, INC.  
601 W 1ST AVE, SUITE 1400 (RM 1441)  
SPOKANE, WA 99201

PREPARED BY:

**POWDER RIVER**  
Development Services, LLC  
408 S EAGLE RD, SUITE 200  
EAGLE, ID 83616

REVISIONS

REV	DATE	DESCRIPTION	INT

A 11/21/22 ISSUED FOR REVIEW 90% BMW  
REVIEWED BY: BMW

**FOR  
REFERENCE  
ONLY**

DISCLAIMER:

THIS PHOTO SIMULATION IS AN ARTIST'S CONCEPTION OF A FUTURE INSTALLATION. THE ACTUAL CONSTRUCTION MAY VARY SLIGHTLY IN DETAIL, LOCATION, COLOR, AND TEXTURE FROM THE SIMULATION.

SITE INFORMATION

**T-MOBILE SITE NAME:**  
HATCH-HANGMAN ATC  
**T-MOBILE SITE#:** SP01804A  
**SITE TYPE:** ±83' MONOPOLE  
w/ PROPOSED 20' EXTENSION  
2200 E 73RD AVE  
SPOKANE, WA  
SPOKANE COUNTY  
47.68368000°, -117.38469000°

SHEET TITLE:

**ELEVATION VIEW "B"**

SHEET NUMBER:

**PS-3**

Spokane County  
 DEC 13 2022  
 Department of Building  
 & Planning

THE INFORMATION CONTAINED IN THIS SET OF CONSTRUCTION DOCUMENTS IS PROPRIETARY BY NATURE. ANY USE OR DISCLOSURE OTHER THAN THAT WHICH RELATES TO CARRIER SERVICES IS STRICTLY PROHIBITED.



AFTER INSTALLMENT SCALE: N.T.S. 2

BEFORE INSTALLMENT SCALE: N.T.S. 1

PREPARED FOR:  
**T-Mobile**<sup>®</sup>  
 T-MOBILE USA, INC.  
 601 W 1ST AVE, SUITE 1400 (RM# 1441)  
 SPOKANE, WA 99201

PREPARED BY:  
  
**POWDER RIVER**  
 Development Services, LLC  
 405 S EAGLE RD, SUITE 200  
 EAGLE, ID 83616

REV	DATE	DESCRIPTION	INT
A	11/21/22	ISSUED FOR REVIEW BOX	BMW

REVIEWED BY: BMW

**FOR  
REFERENCE  
ONLY**

DISCLAIMER:  
THIS PHOTO ILLUSTRATION IS AN ARTIST'S CONCEPT OF A FUTURE INSTALLATION. THE ACTUAL CONSTRUCTION AND FINAL APPEARANCE IN SIZE, COLOR, SHAPE, AND TEXTURE FROM THIS ILLUSTRATION.

SITE INFORMATION  
**T-MOBILE SITE NAME:**  
 HATCH-HANGMAN ATC  
**T-MOBILE SITE#:** SP01804A  
**SITE TYPE:** ±83' MONOPOLE  
 w/ PROPOSED 20' EXTENSION  
 2200 E 73RD AVE  
 SPOKANE, WA  
 SPOKANE COUNTY  
 47.68368000°, -117.38469000°

SHEET TITLE:  
**ELEVATION VIEW "C"**

SHEET NUMBER:  
**PS-4**

THE INFORMATION CONTAINED IN THIS SET OF CONSTRUCTION DOCUMENTS IS PROPRIETARY BY NATURE. ANY USE OR DISCLOSURE OTHER THAN THAT WHICH RELATES TO CARRIER SERVICES IS STRICTLY PROHIBITED.

Spokane County  
 DEC 13 2022  
 Department of Building  
 & Planning



AFTER INSTALLMENT SCALE: N.T.S. 2

BEFORE INSTALLMENT SCALE: N.T.S. 1

PREPARED FOR:  
**T-Mobile®**  
 T-MOBILE USA, INC.  
 601 W 1ST AVE, SUITE 1400 (RM# 1441)  
 SPOKANE, WA 99201

PREPARED BY:  
  
**POWDER RIVER**  
 Development Services, LLC  
 408 S EAGLE RD, SUITE 200  
 EAGLE, ID 83616

REVISIONS

REV	DATE	DESCRIPTION	INT
A	11/21/22	ISSUED FOR REVIEW BOX	BWV

REVIEWED BY: BWV

**FOR  
 REFERENCE  
 ONLY**

DISCLAIMER:  
 THIS PLOTTING SIMULATION IS AN ARTIST'S REPRESENTATION OF A FUTURE INSTALLATION. THE ACTUAL APPEARANCE MAY VARY SLIGHTLY IN SIZE, COLOR, ORIENTATION FROM THE SIMULATION.

SITE INFORMATION  
**T-MOBILE SITE NAME:**  
 HATCH-HANGMAN ATC  
**T-MOBILE SITE#: SP01804A**  
**SITE TYPE: ±83' MONOPOLE**  
**w/ PROPOSED 20' EXTENSION**  
 2200 E 73RD AVE  
 SPOKANE, WA  
 SPOKANE COUNTY  
 47.68368000°, -117.38469000°

SHEET TITLE:  
**ELEVATION VIEW "D"**

SHEET NUMBER:  
**PS-5**

