



# Spokane County Assessor's Office



**Tom Konis**

Assessor

Spokane County

[tkonis@spokanecounty.org](mailto:tkonis@spokanecounty.org)

(509) 477-5732



# Spokane County



## Just The Facts

- Size: 1,781 square miles
- Total parcels: 236,694
  - 219,918 real parcels
  - 11,169 personal property
- \$88,340,941,294 total taxable value
- Taxes collected in 2022: \$817,671,871

# The Assessor's Office



- 49 Total Employees.
- 18 Residential Appraisers
- 9 Commercial Appraisers
- Our appraisers physically inspect 1/6 of the parcels every year and update values on 100% of the parcels every year.

# State Law



## RCW 84.40.030

All property must be valued at one hundred percent of its true and fair value in money and assessed on the same basis unless specifically provided otherwise by law.

# State Constitution



## Article 7

The Washington State Constitution requires that all taxes be uniform upon the same class of property within the territorial limits of the authority levying the tax. In order to comply with this constitutional mandate and ensure that all taxes are uniform, all real property must be valued in a manner consistent with this principle of uniformity.

# Yes Values Do Go Down



Assessment Year	Assessed Value	Tax Year	Total Levied
2022	88,340,941,294	2023	817,671,871
2021	68,475,842,152	2022	769,563,132
2020	61,404,479,662	2021	712,827,434
2019	54,747,262,597	2020	658,133,986
2018	49,737,060,837	2019 *	579,176,558
2017	45,619,983,922	2018	618,776,703
2016	42,412,957,287	2017	562,961,631
2015	40,226,252,594	2016	544,671,452
2014	38,461,824,374	2015	529,030,916
2013	37,239,994,940	2014	509,749,880
2012 *	36,403,734,401	2013	501,798,026
2011 *	37,451,702,462	2012	494,787,990
2010 *	38,068,124,825	2011	490,088,802
2009	38,755,646,727	2010	457,345,323
2008	38,133,367,260	2009	430,429,081
2007	35,843,660,824	2008	404,290,217
2006	31,028,465,982	2007	396,789,684

# Property Tax

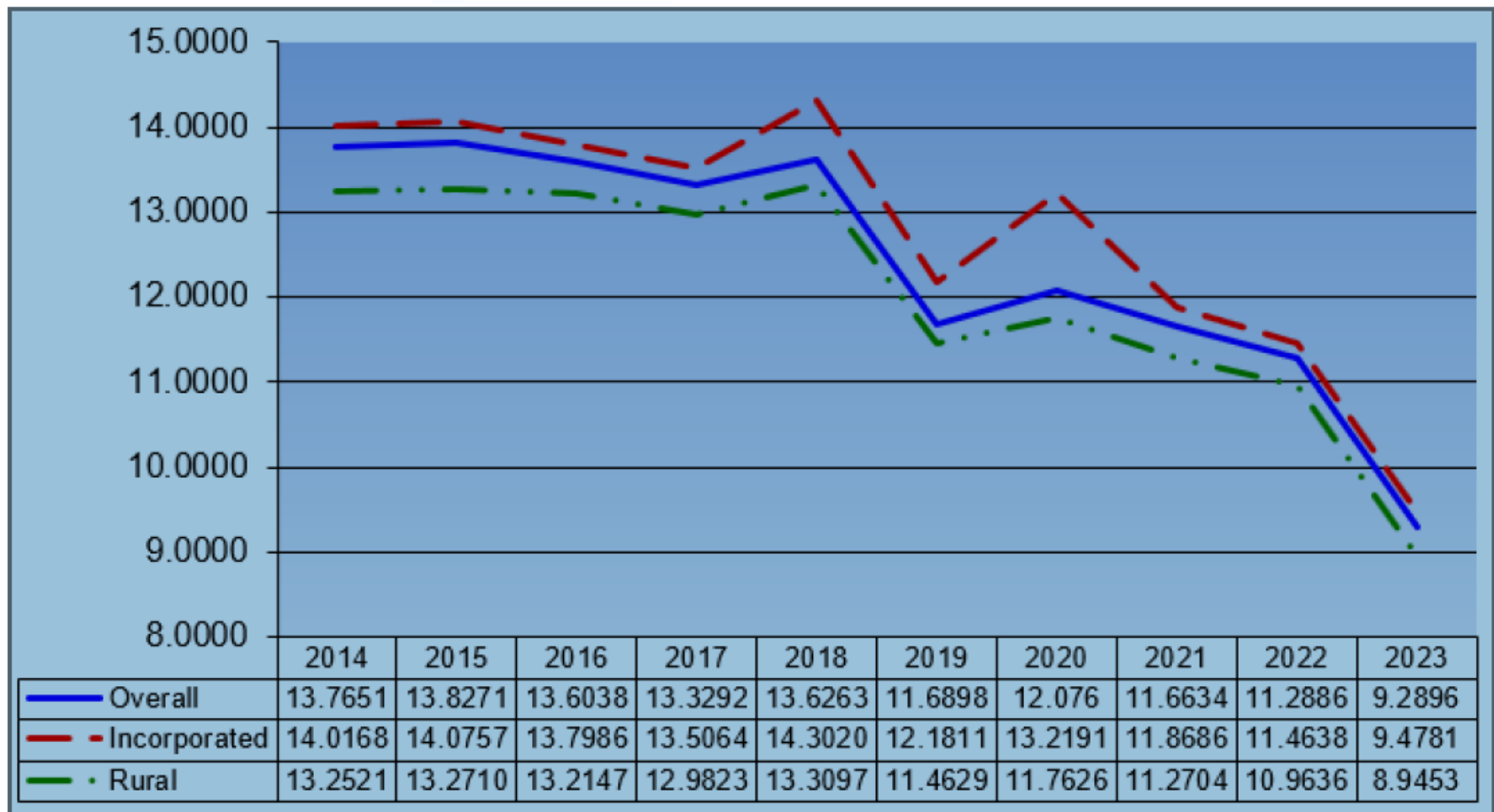


The amount you pay depends on the cost of state and local government, including schools, roads, parks, libraries, hospitals, city and county government, as well as your local taxing districts such as port district, fire districts and sewer districts. A large part of each property tax dollar goes to pay off construction bonds for school buildings and other public projects.

# Levy Rates



## AVERAGE TAX RATES

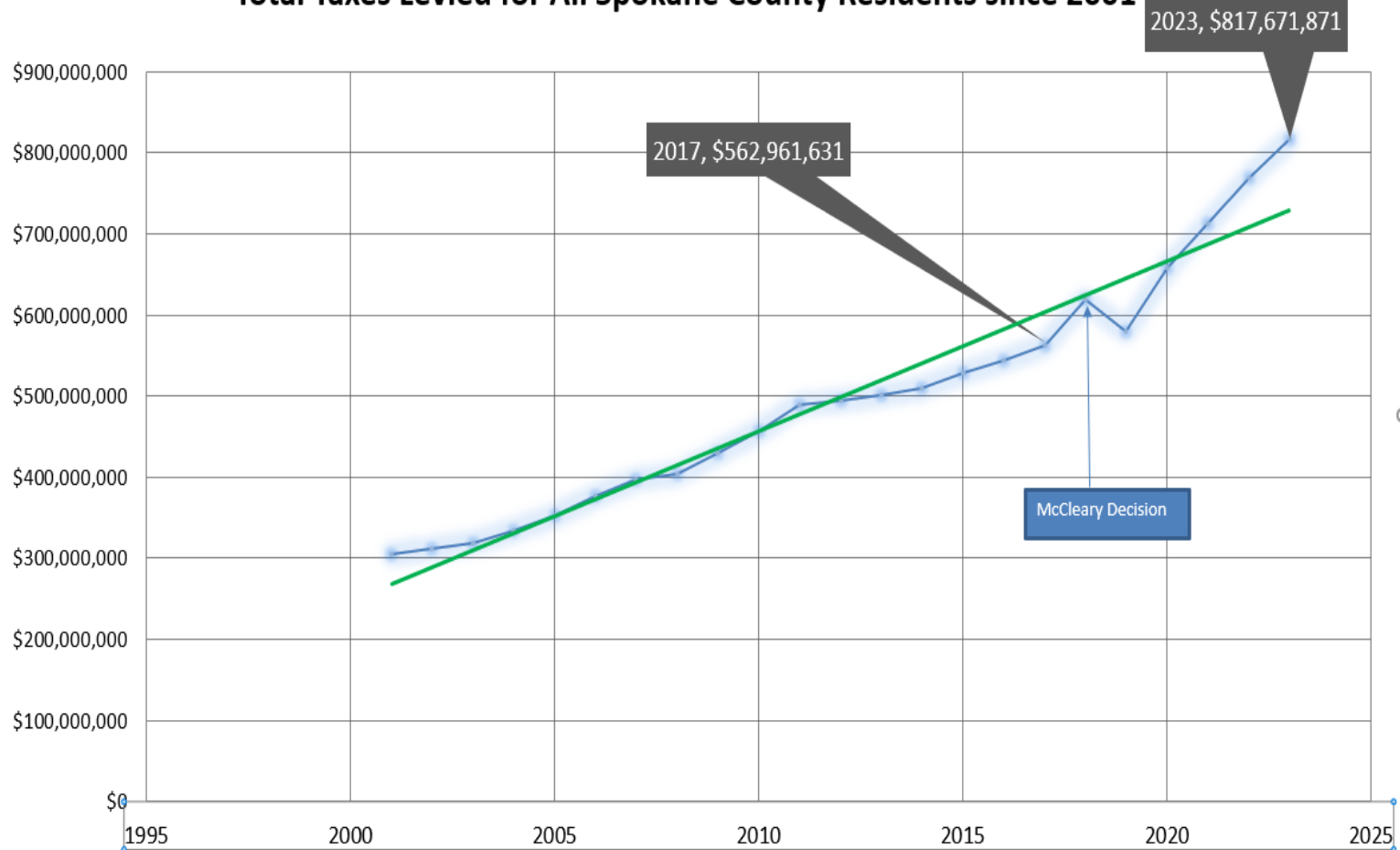




# Tax History



**Total Taxes Levied for All Spokane County Residents since 2001**



# Where do Taxes Come From

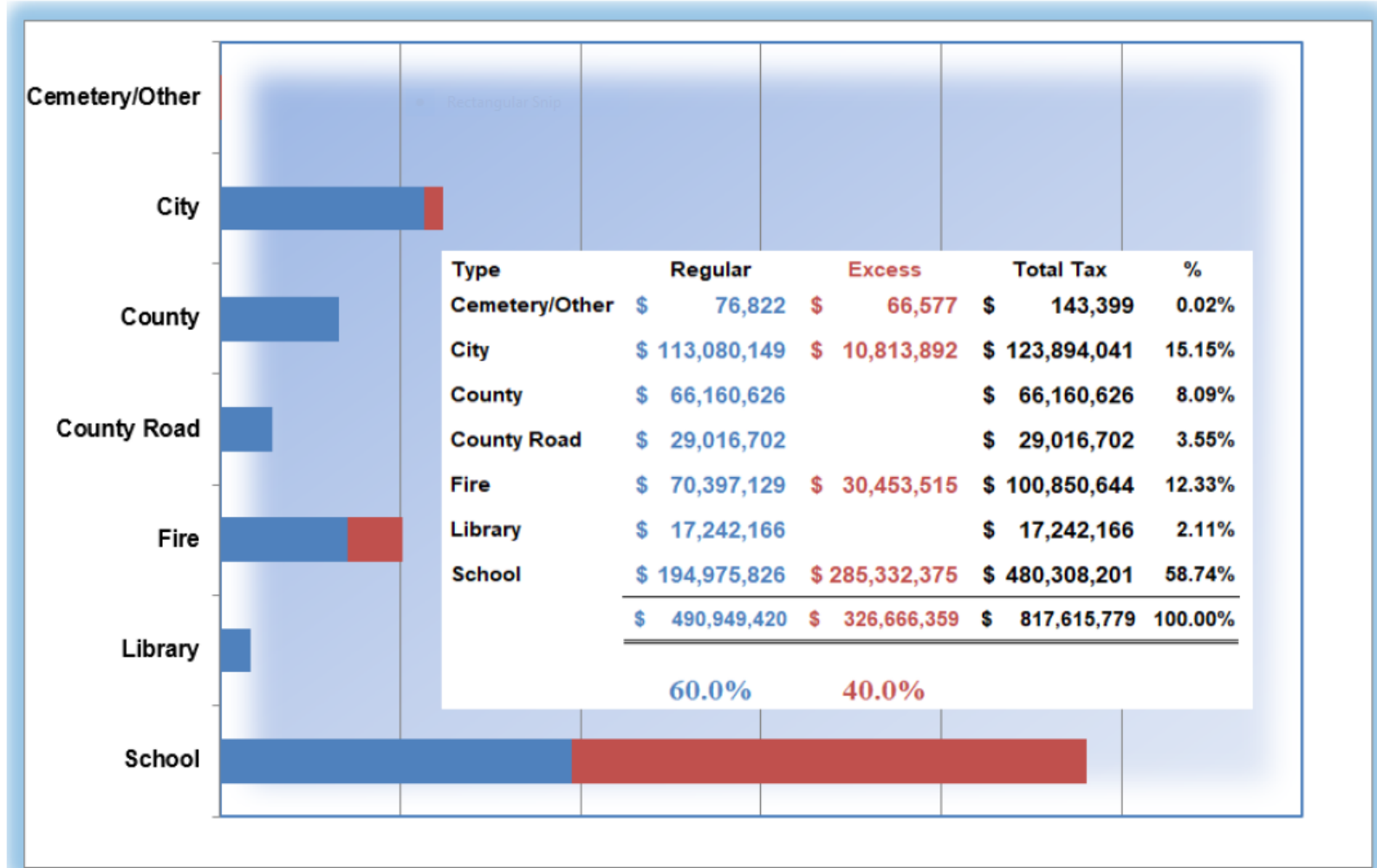


---

55 Taxing Districts

181 Tax Code Areas

# Where do your Taxes GO?



# Municipalities



Municipality	Change from 2022	% of Change
City of Cheney	\$ (262,712.10)	-9.16%
City of Deer Park	\$ 47,031.96	8.75%
City of Liberty Lake	\$ 4,980.00	0.17%
City of Spokane	\$ 10,374,353.13	11.50%
City of Spokane Valley	\$ 373,753.49	2.84%
Spokane County	\$ (606,326.93)	-3.62%

# School Districts



School Districts	Sum of 2023 Increase	Sum of 2023 % Increase
Central Valley School District #356	\$ 2,676,537.52	5.78%
East Valley School District #361	\$ 3,333,578.84	11.58%
Mead School District #354	\$ 2,466,022.04	8.19%
Spokane School District #81	\$ 10,600,391.35	8.62%
West Valley School District #363	\$ 1,266,217.45	11.13%

# State School Portion



---

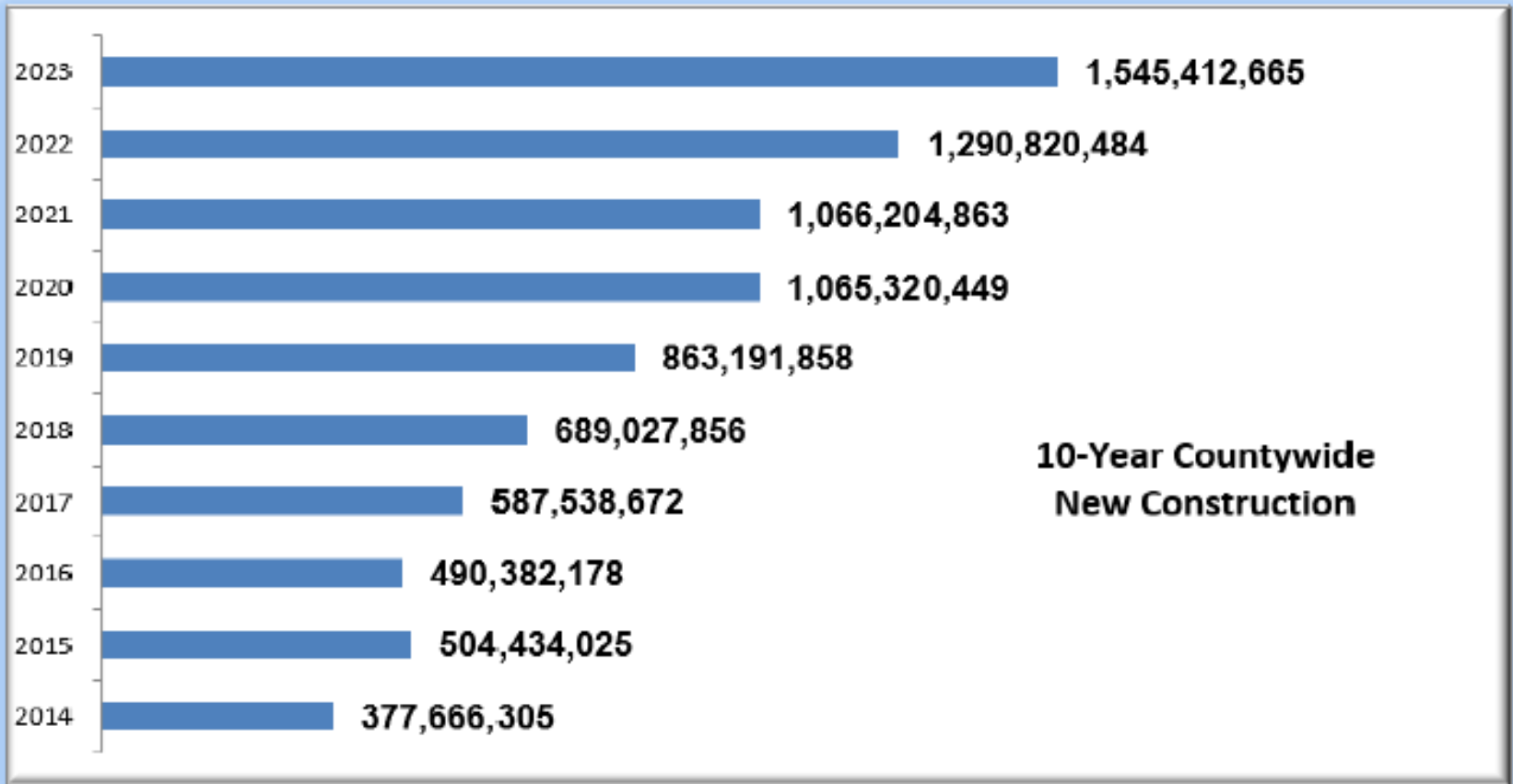
2022	\$181,501,118
2023	\$194,975,826
Additional Collected Increase	\$3,474,700 7.4%

# Values for 2024 Tax



Still too early to tell.

# New Construction





# Heads up



- HB 1355-Increase in income limit for Seniors, Disabled and Veterans. This has passed in the House and has had a Senate hearing.
- All other bills asking for property tax relief died in committee.



---

# Questions?

A red pushpin is pinned to the top center of a white, rectangular sticky note. The note is tilted slightly to the right. The words "THANK YOU" are written on the note in a large, black, hand-drawn, sans-serif font. The word "THANK" is on the top line, and "YOU" is on the bottom line. The note has a subtle drop shadow, giving it a three-dimensional appearance as if it's floating above the background.

THANK  
YOU

**Tom Konis**

Assessor

Spokane County

[tkonis@spokanecounty.org](mailto:tkonis@spokanecounty.org)

(509) 477-5732